



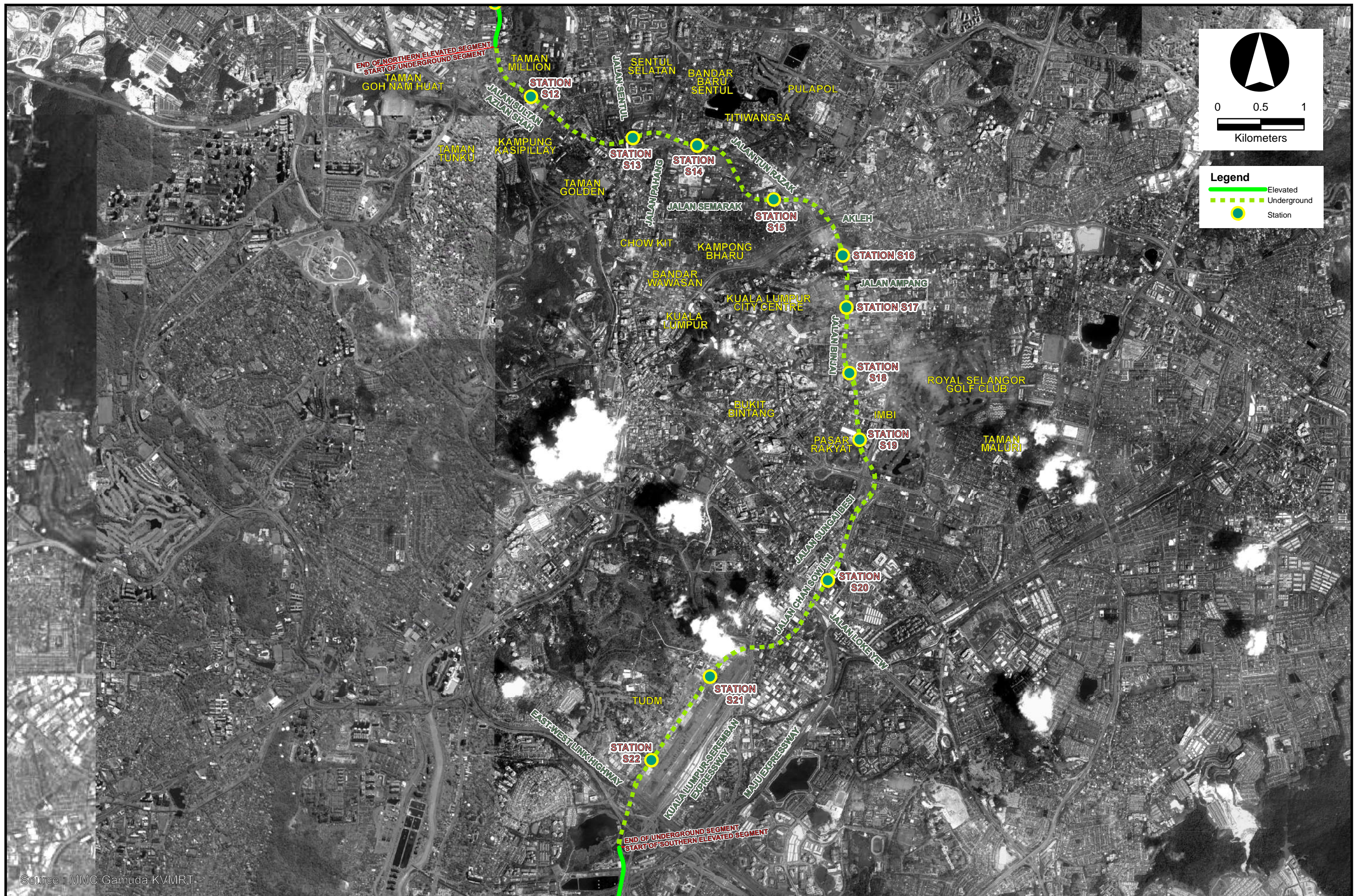
Source: MMC-Gamuda-KVMRT



Figure 3-1

Northern Elevated Segment



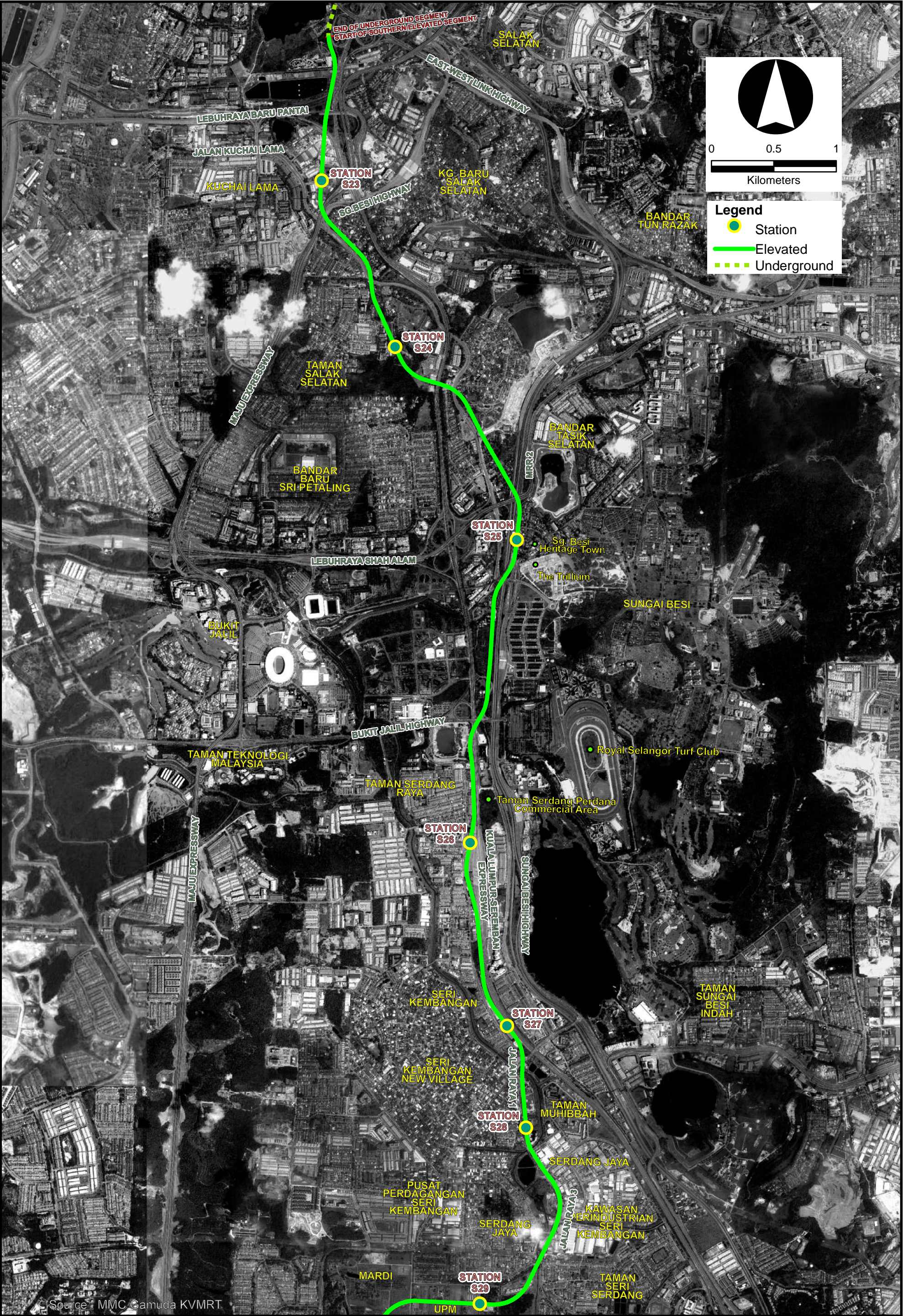


Source : MMC Gamuda KVMRT

Figure 3-2

Underground Segment





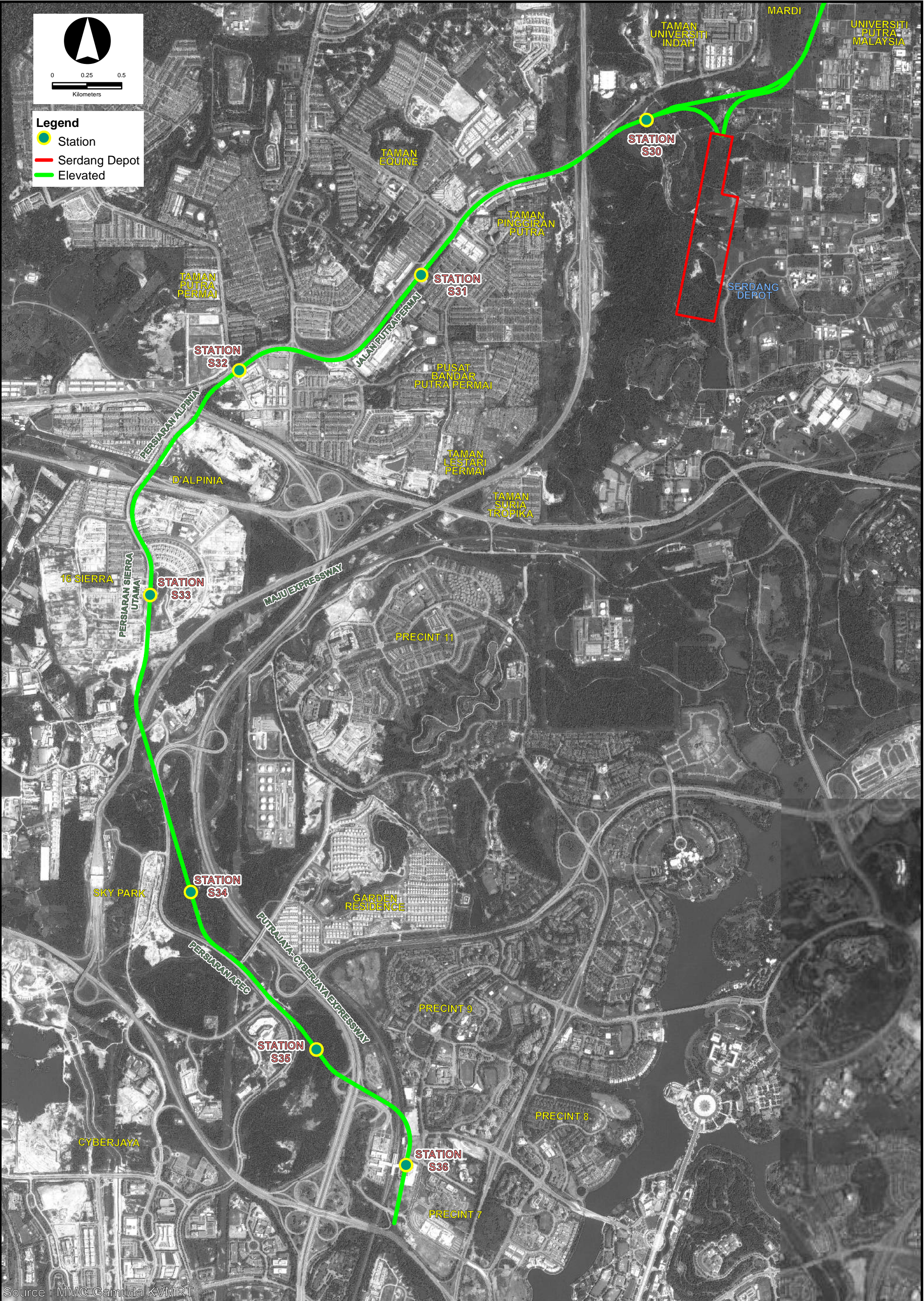
Source: MMC Gamuda KVMRT



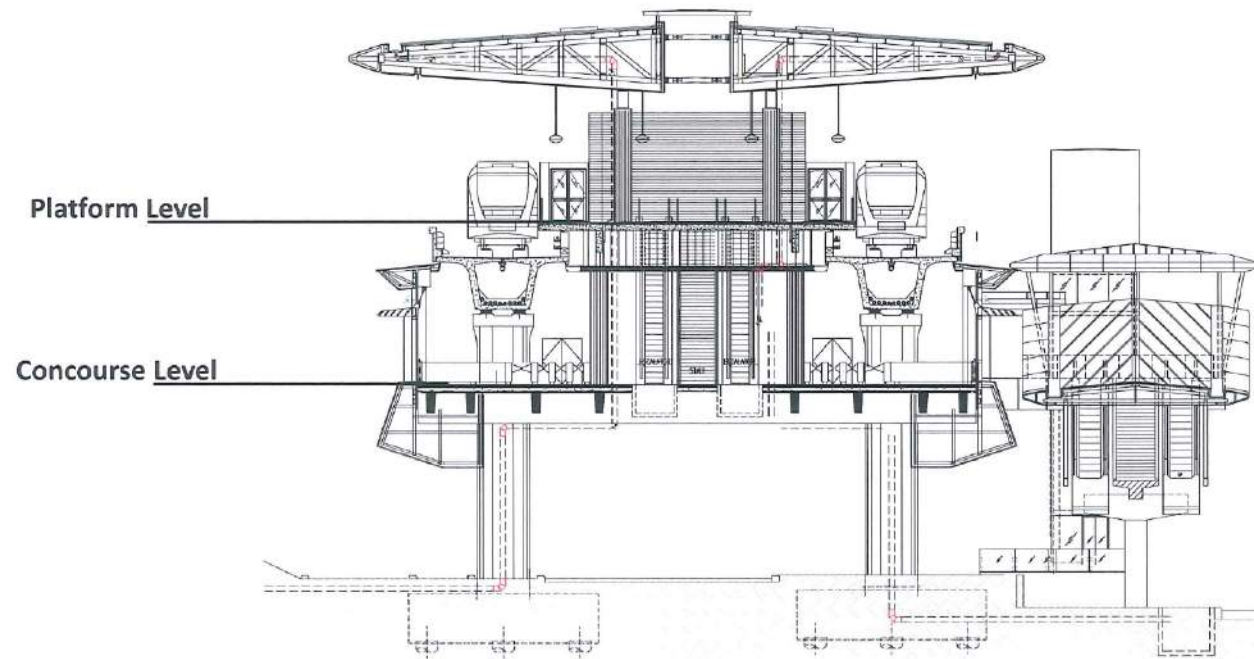
Figure 3-3

Southern Elevated Segment 1





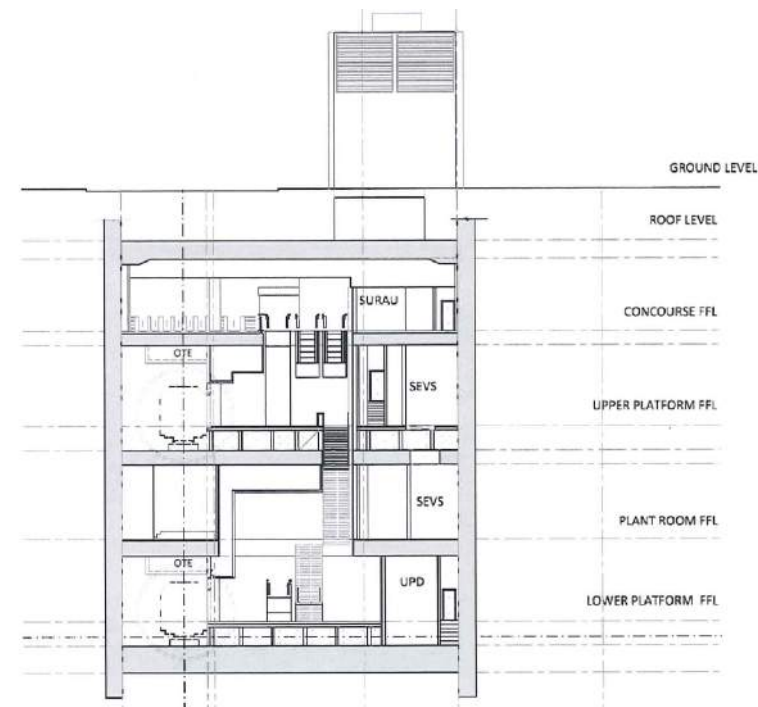




Source : MMC Gamuda KVMRT







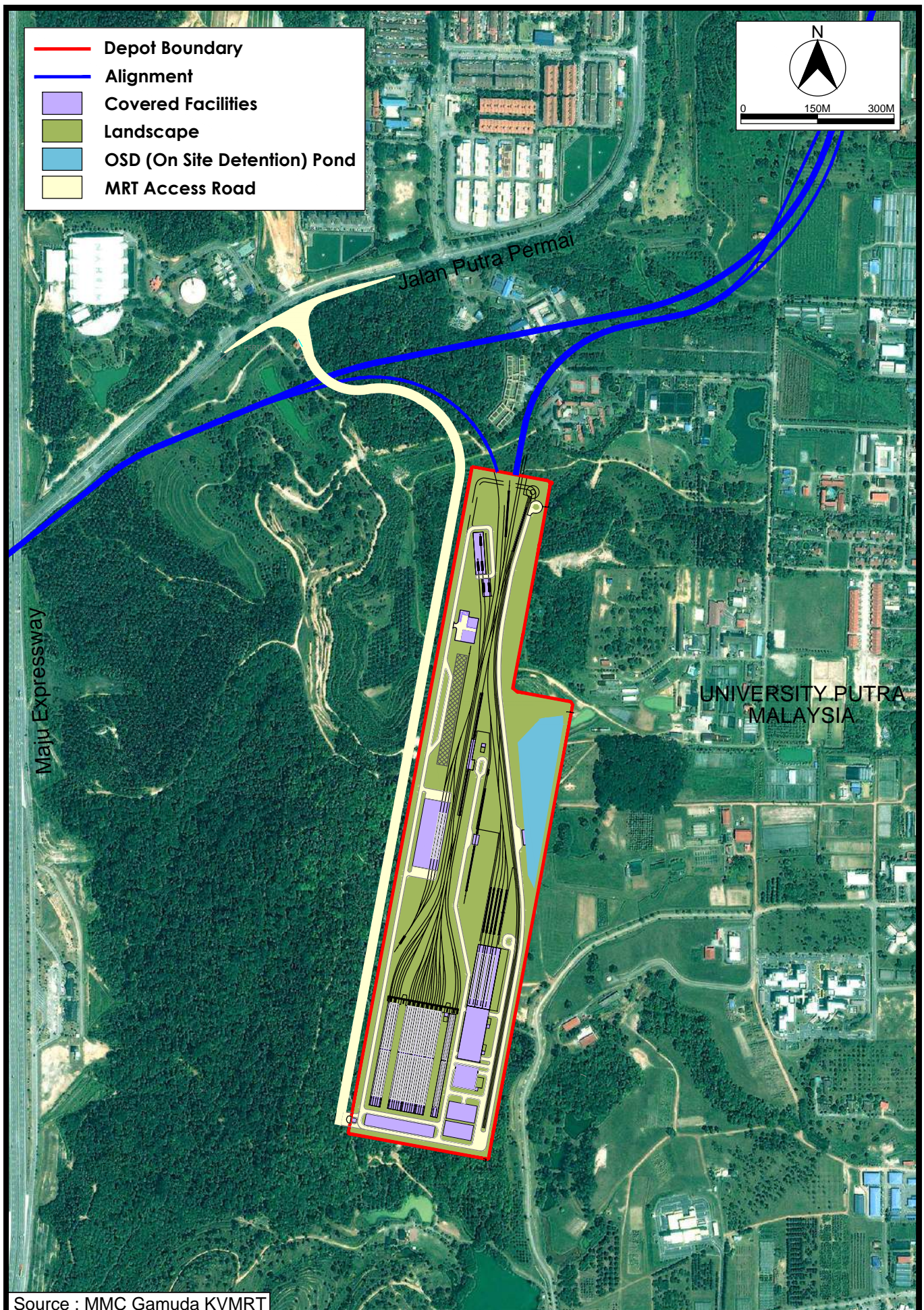
Source : MMC Gamuda KVMRT



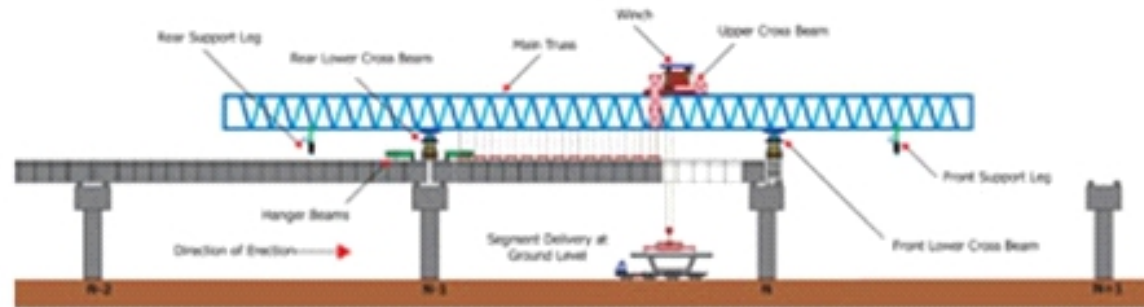
Figure 3-7

Example of Stacked Platform Station

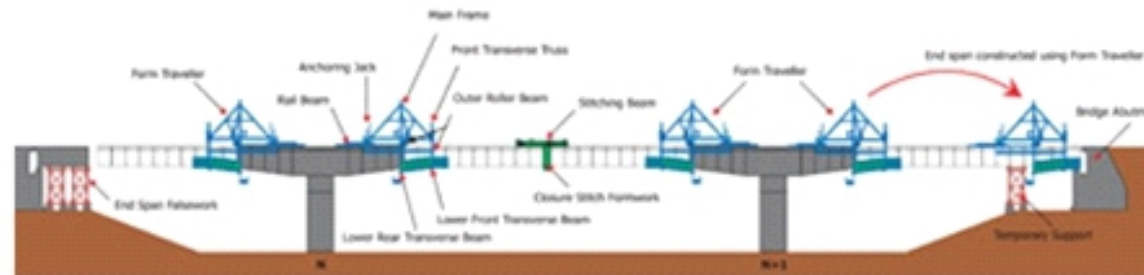




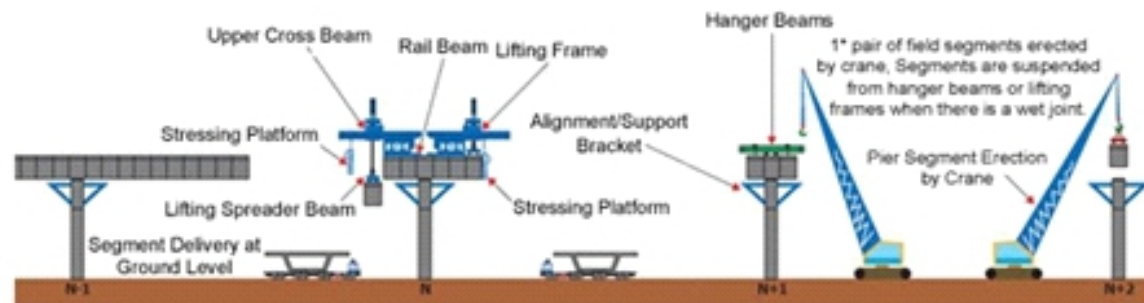




**Elevation View Span-by-span Erection with Launching Gantry Method**



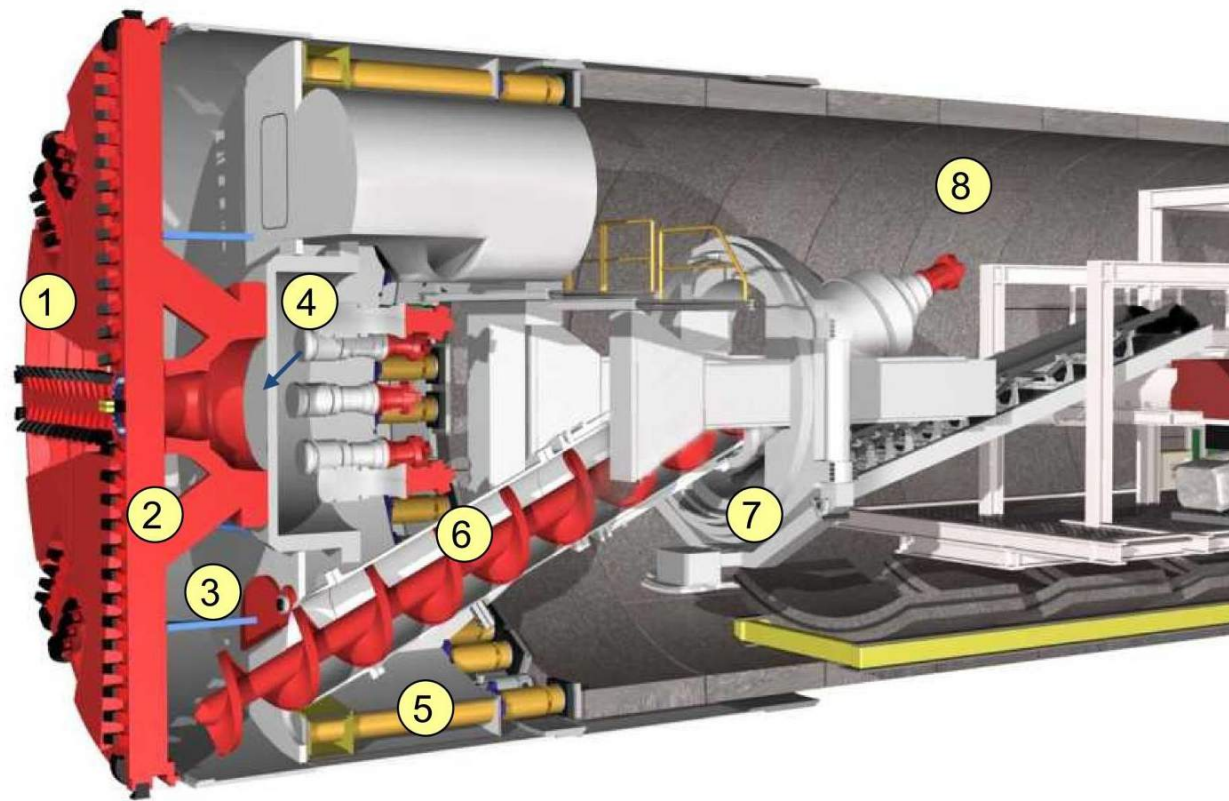
**Elevation View Form-traveller Method**



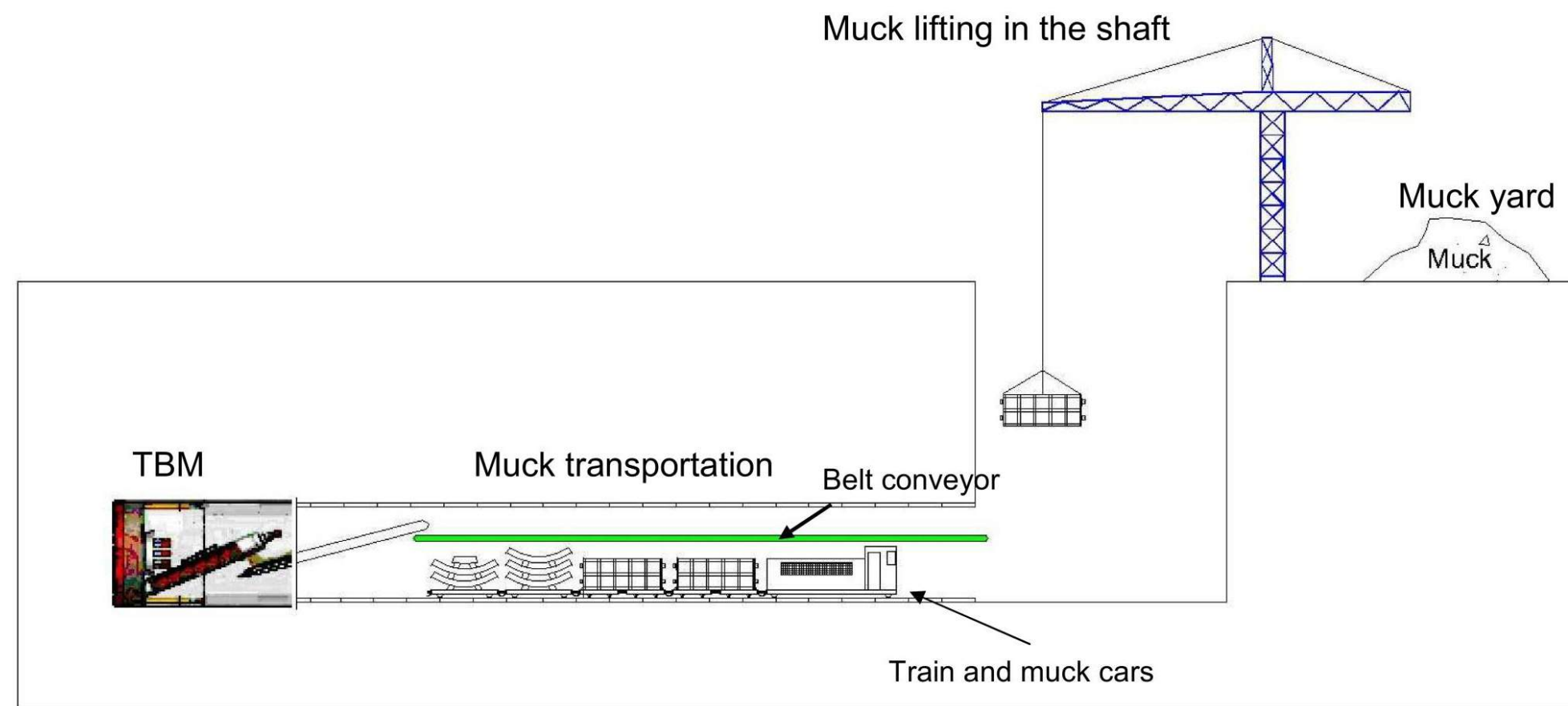
**Elevation View Balanced cantilever erection with lifting frames Method**

Source : MMC Gamuda KVMRT



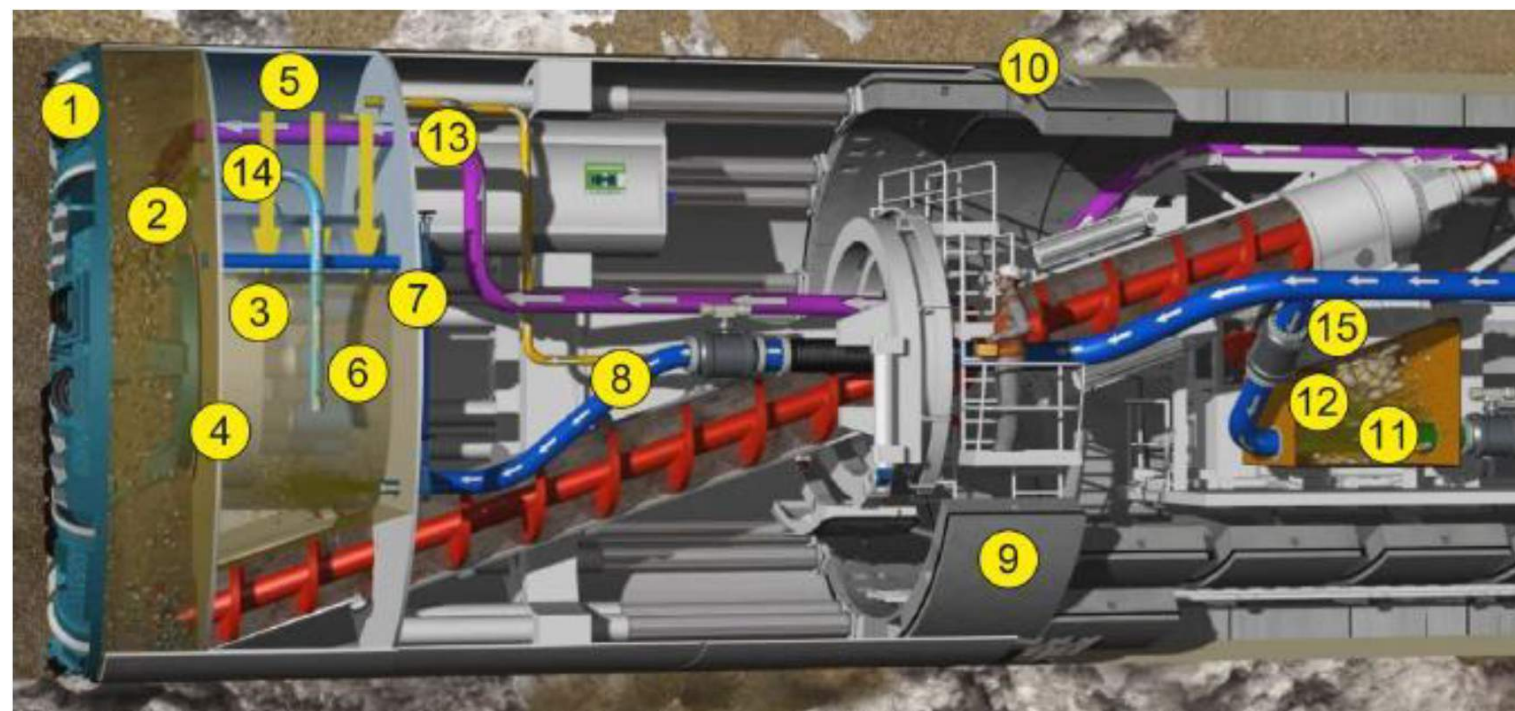


- 1. Tunnel face
- 2. Cutting wheel
- 3. Excavation chamber
- 4. Pressure bulkhead
- 5. Thrust cylinders
- 6. Screw conveyor
- 7. Erector
- 8. Segment lining

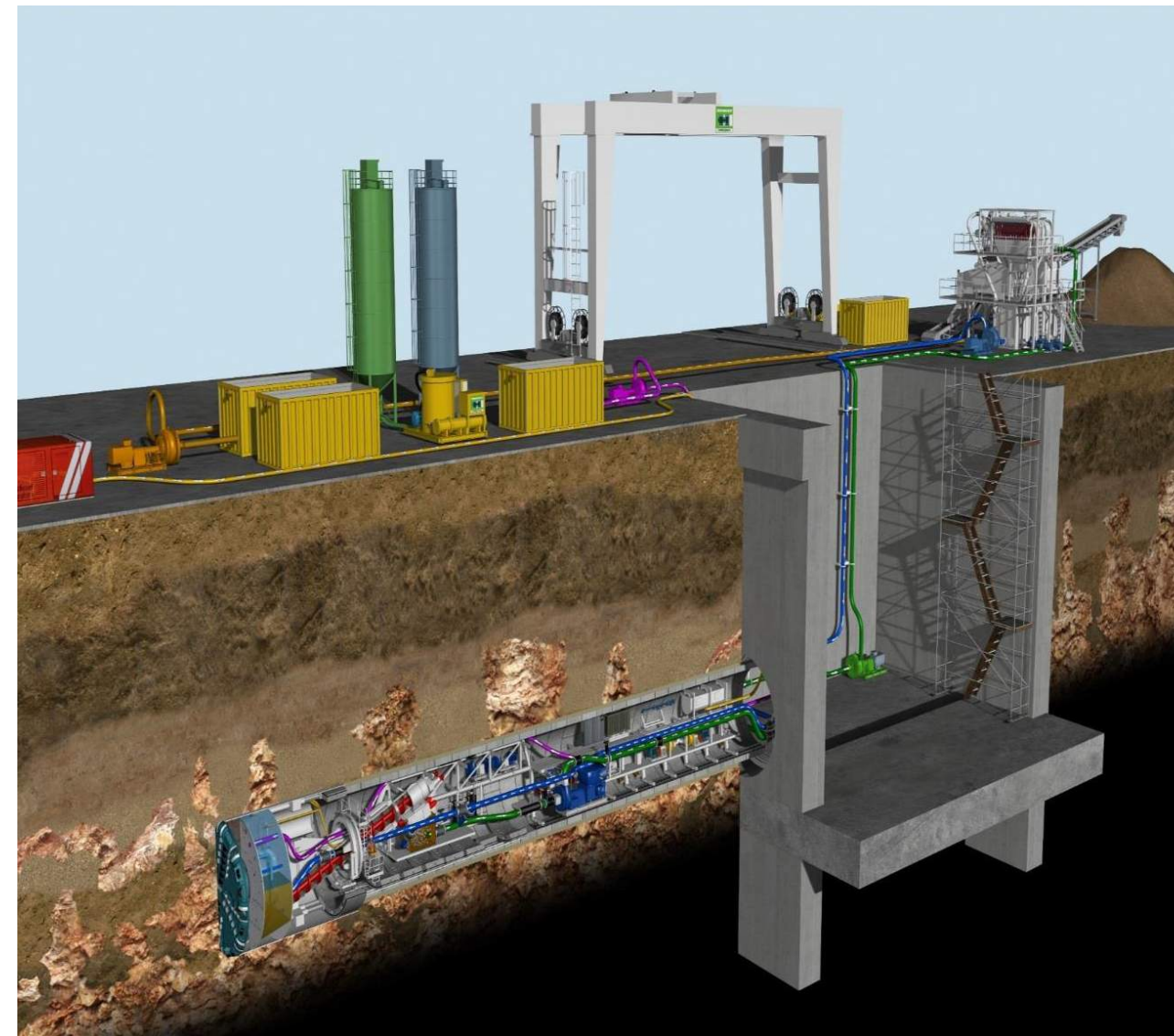


Source : MMC Gamuda KVMRT



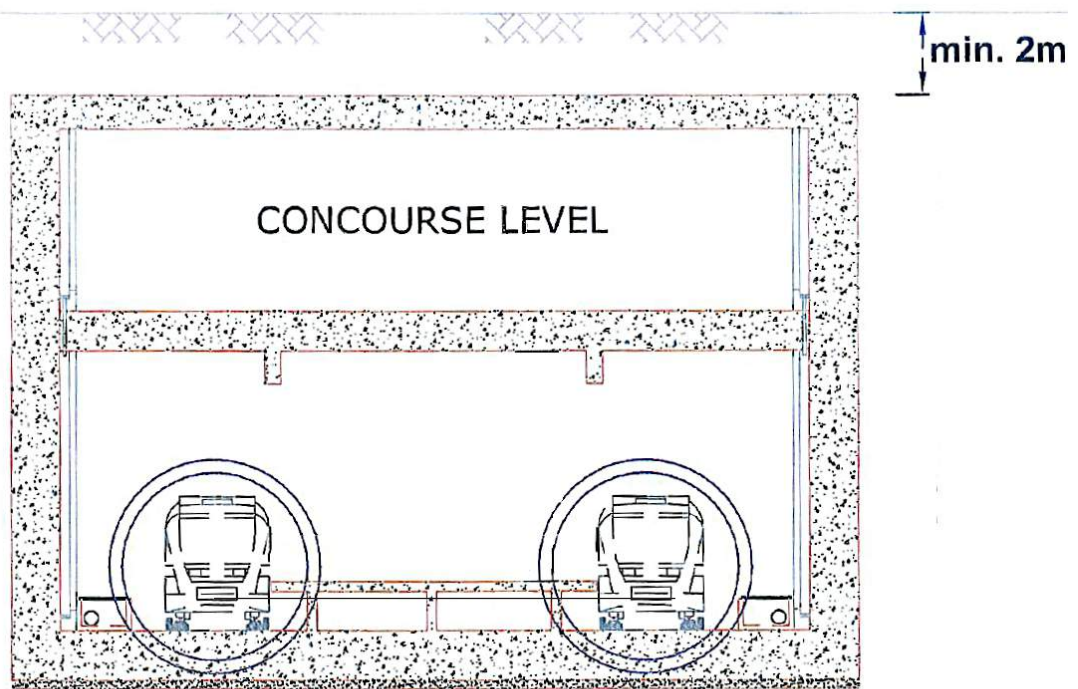


- |                         |                             |
|-------------------------|-----------------------------|
| [1] Cutting wheel       | [10] Tailskin               |
| [2] Excavation chamber  | [11] Slurry line            |
| [3] Face support medium | [12] Slurryfier box         |
| [4] Submerged wall      | [13] Suspension line (HDSM) |
| [5] Air bubble          | [14] Communication pipes    |
| [6] Working chamber     | [15] Rotary crusher         |
| [7] Bulkhead            |                             |
| [8] Feedline (LD SM)    |                             |
| [9] Segment             |                             |

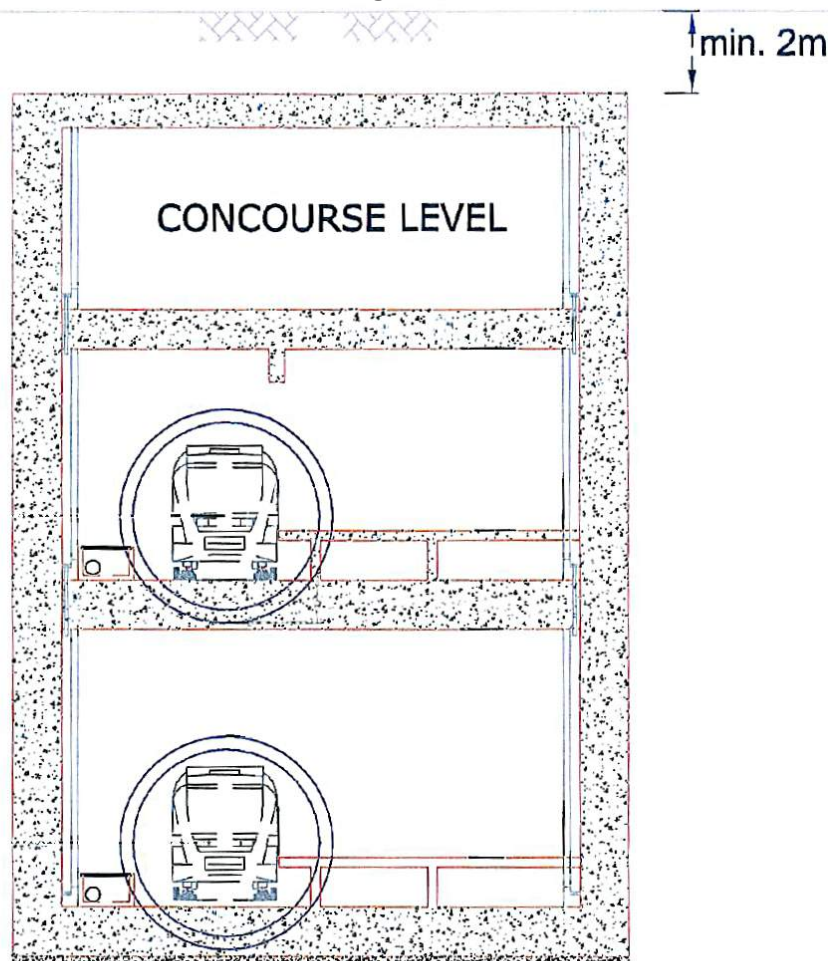


Source : MMC Gamuda KVMRT





**Parallel Platform Underground Station**



**Stacked Platform Underground Station**

Source : MMC Gamuda KVMRT