

**LEGEND**

- ELEVATED
- - - - UNDERGROUND
- KTM
- KJ LRT
- AG LRT
- MONORAIL
- ERL
- HSR
- MRT MRT
- P PARK & RIDE

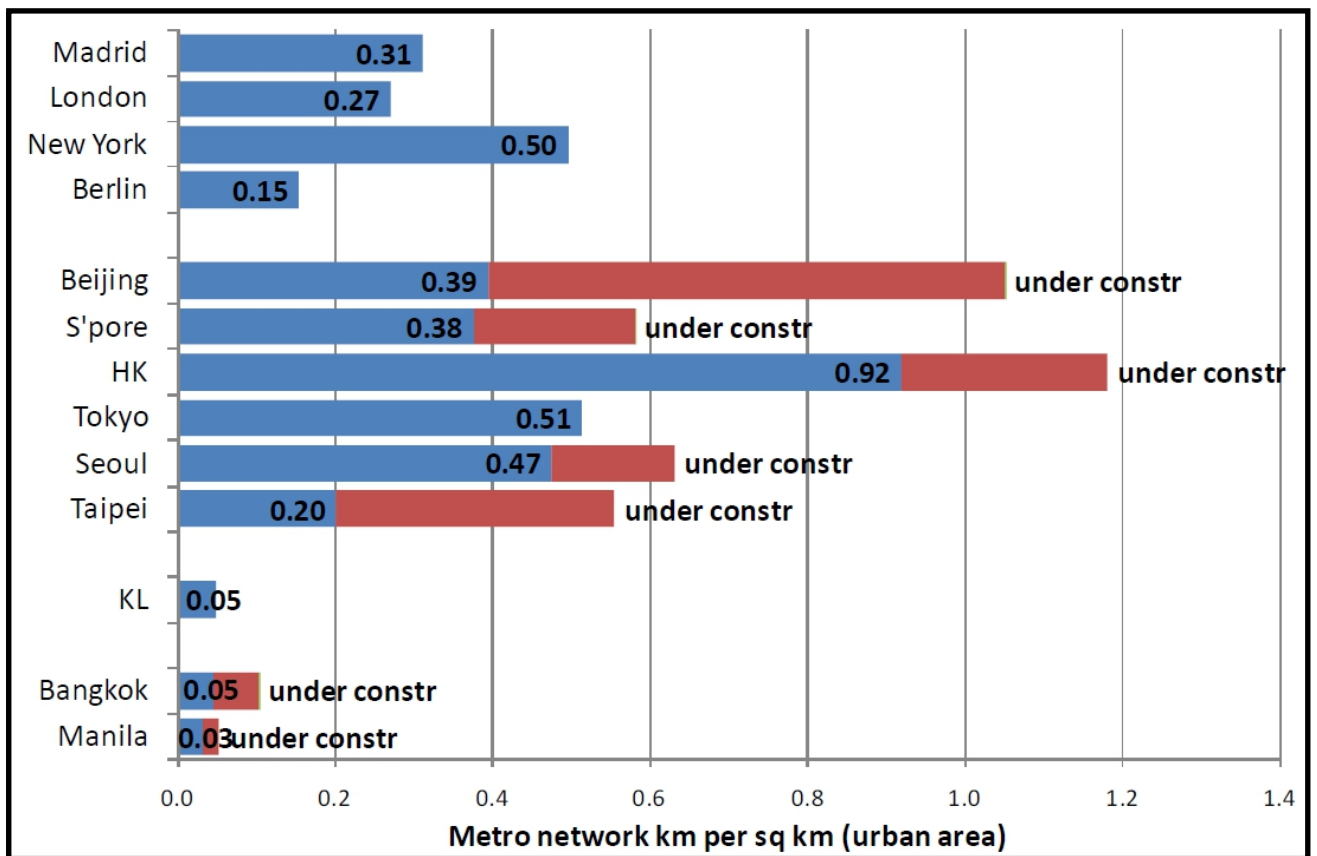
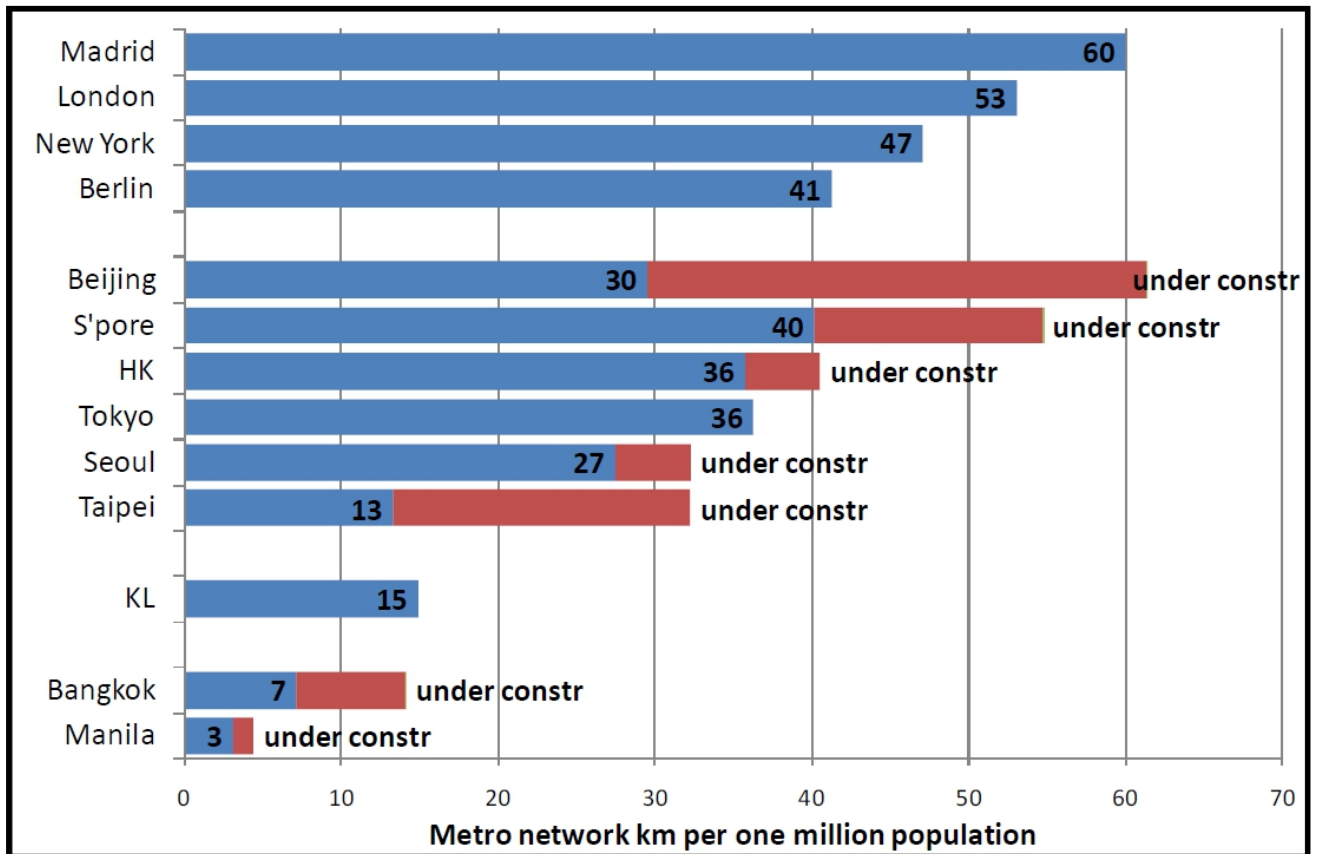
DESCRIPTION	LENGTH (KM)	STATION (NOS)
ELEVATED	38.7	25
UNDERGROUND	13.5	11
<b>Total</b>	<b>52.2</b>	<b>36</b>

\* Note : 1) As per "Project Mass Rapid Transit Laluan 2 : Sg. Buloh - Serdang - Putrajaya (SSP)" Railway Scheme  
 2) The total UG Station includes 1 no of TRX station built under SBK Line



Figure ES-1

Overview of SSP Line

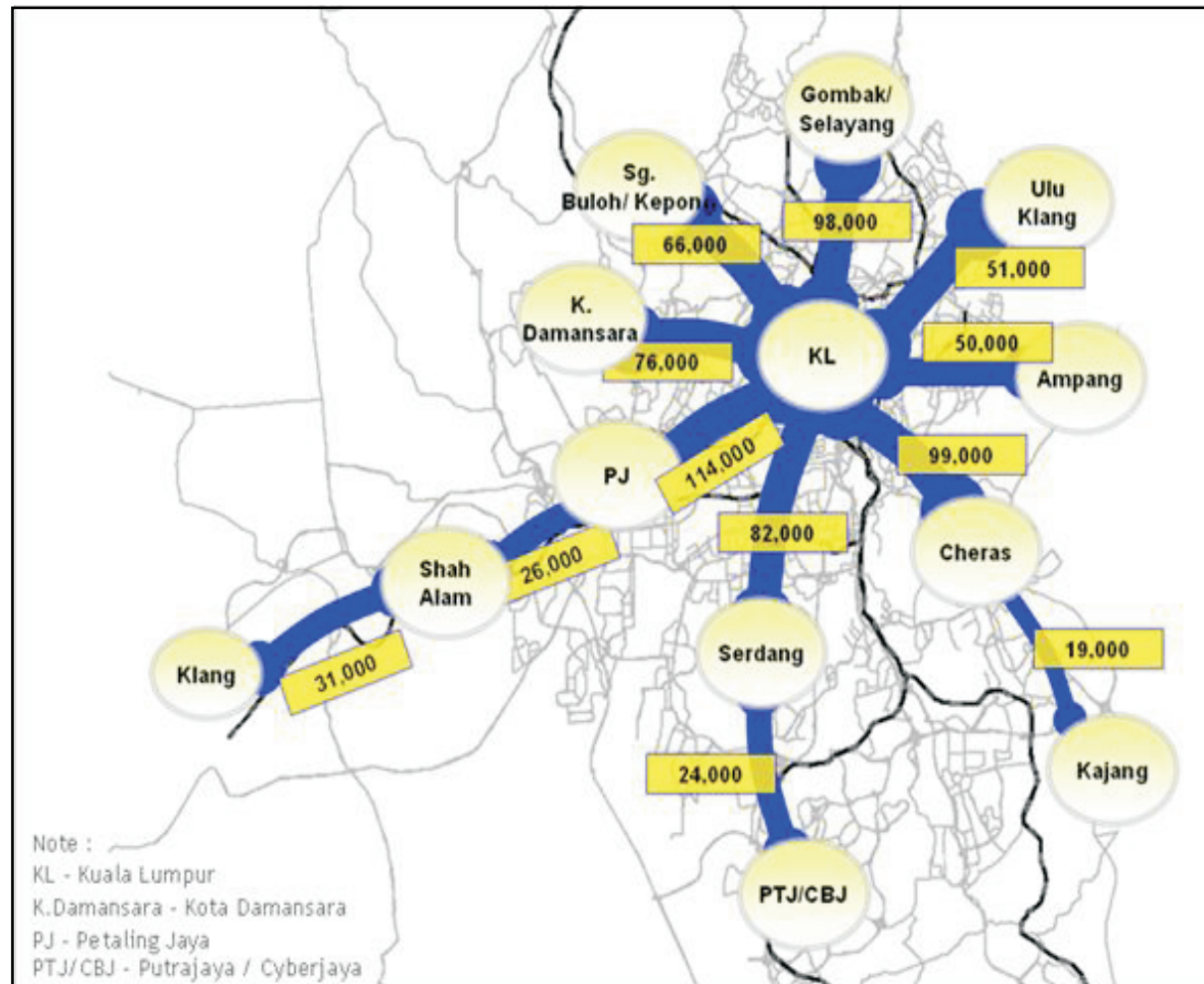


Source : KV MRT, Alignment Planning Report, AECOM 2010



Figure ES-2

Population and Density Comparison of Metro Network

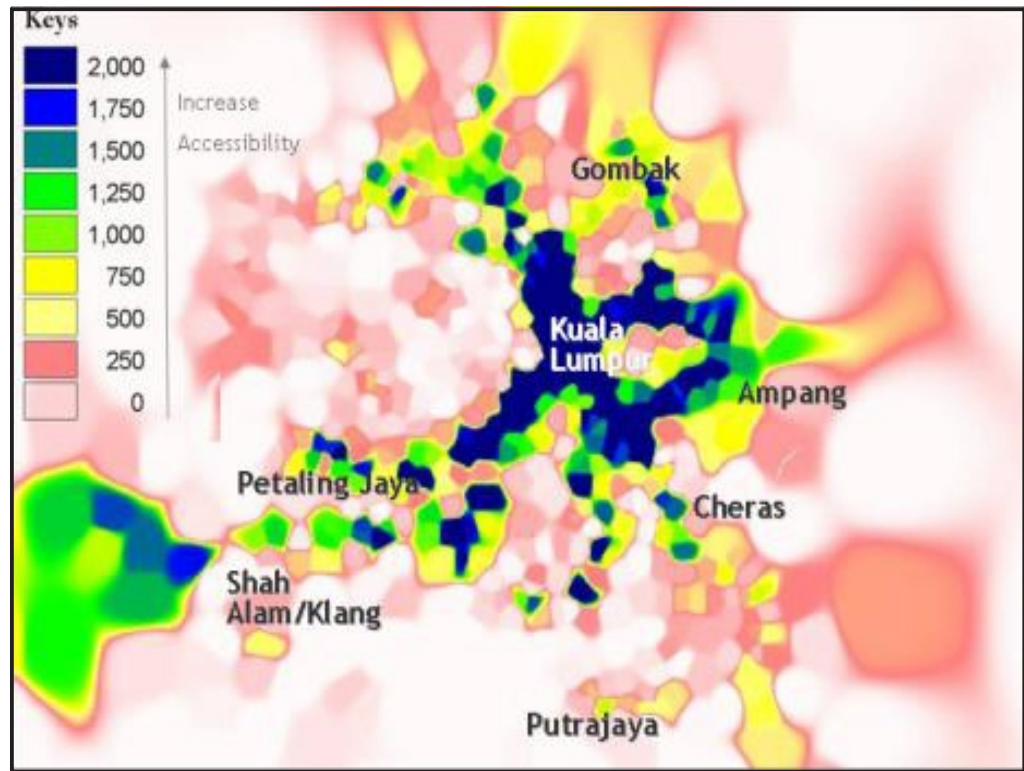


Source : Greater KL/Klang Valley Public Transport Master Plan



Figure ES-3

Future Travel Demand Corridor for Greater KL/Klang Valley



Source : Greater KL/Klang Valley Public Transport Master Plan



Figure ES-4

Accessibility Map for Greater KL/Klang Valley

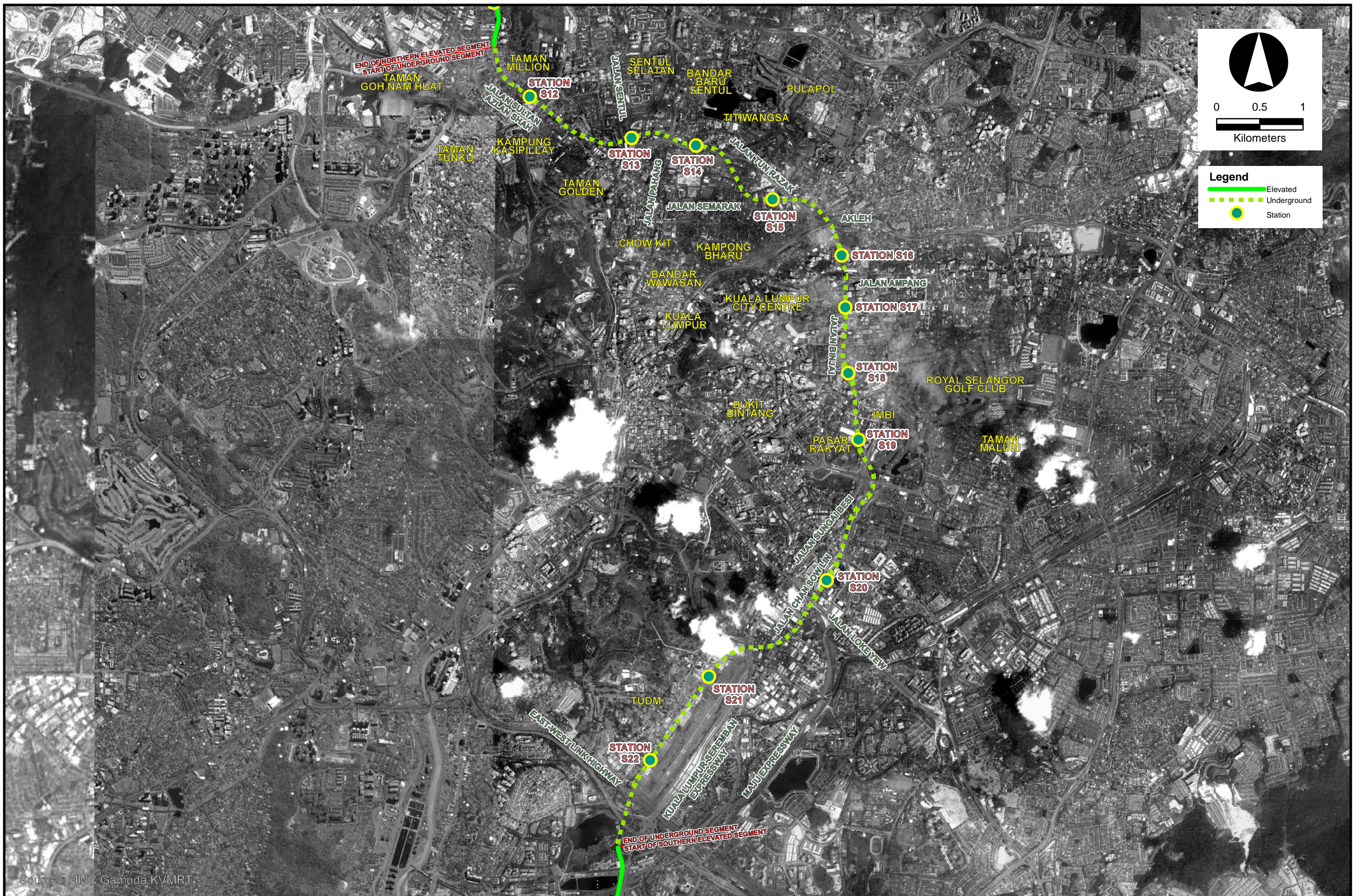


Source: MMC-Gamuda-KVMRT



Figure ES-5

Northern Elevated Segment

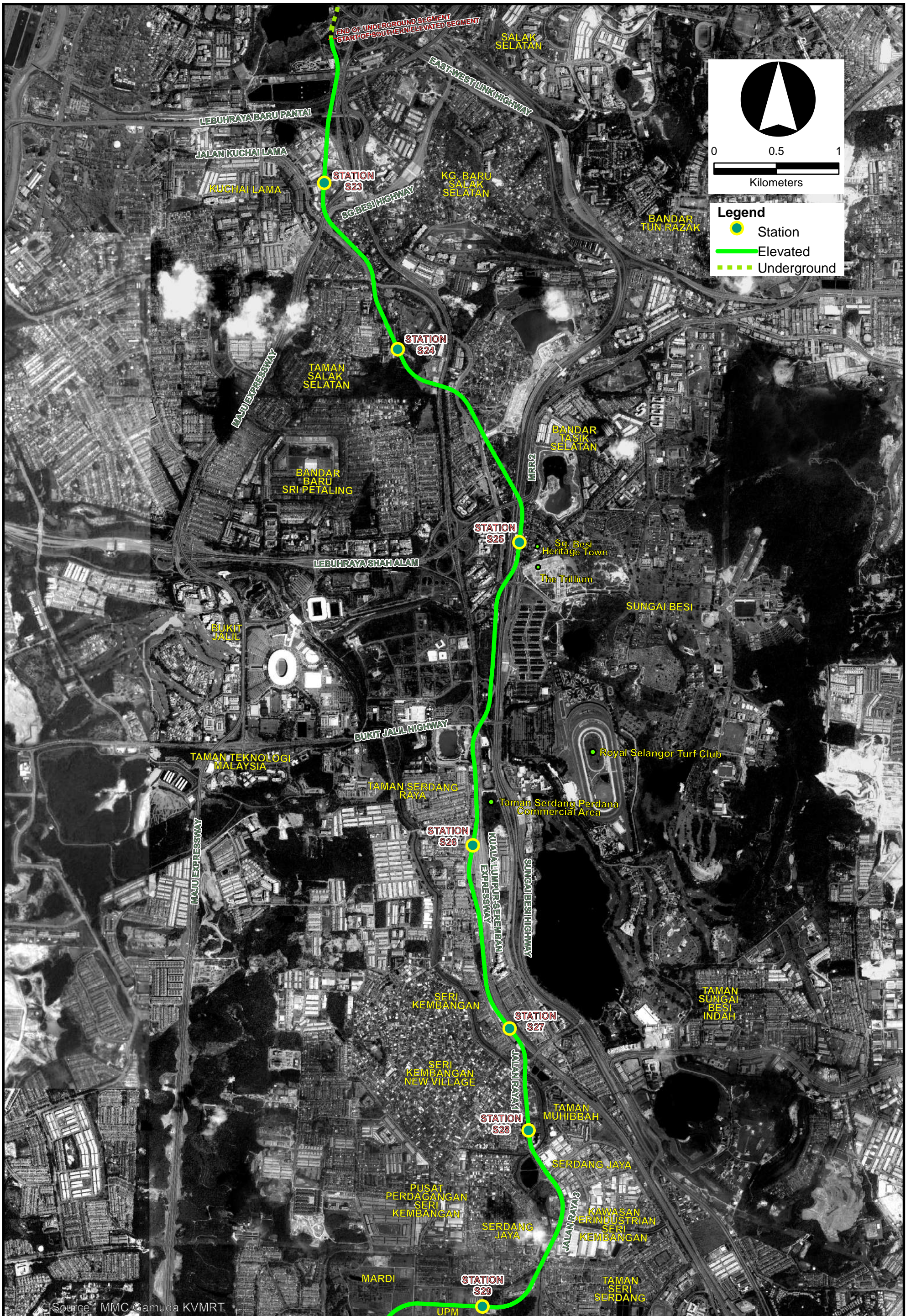


Source : MMC Gamuda KVMRT



Figure ES-6

Underground Segment

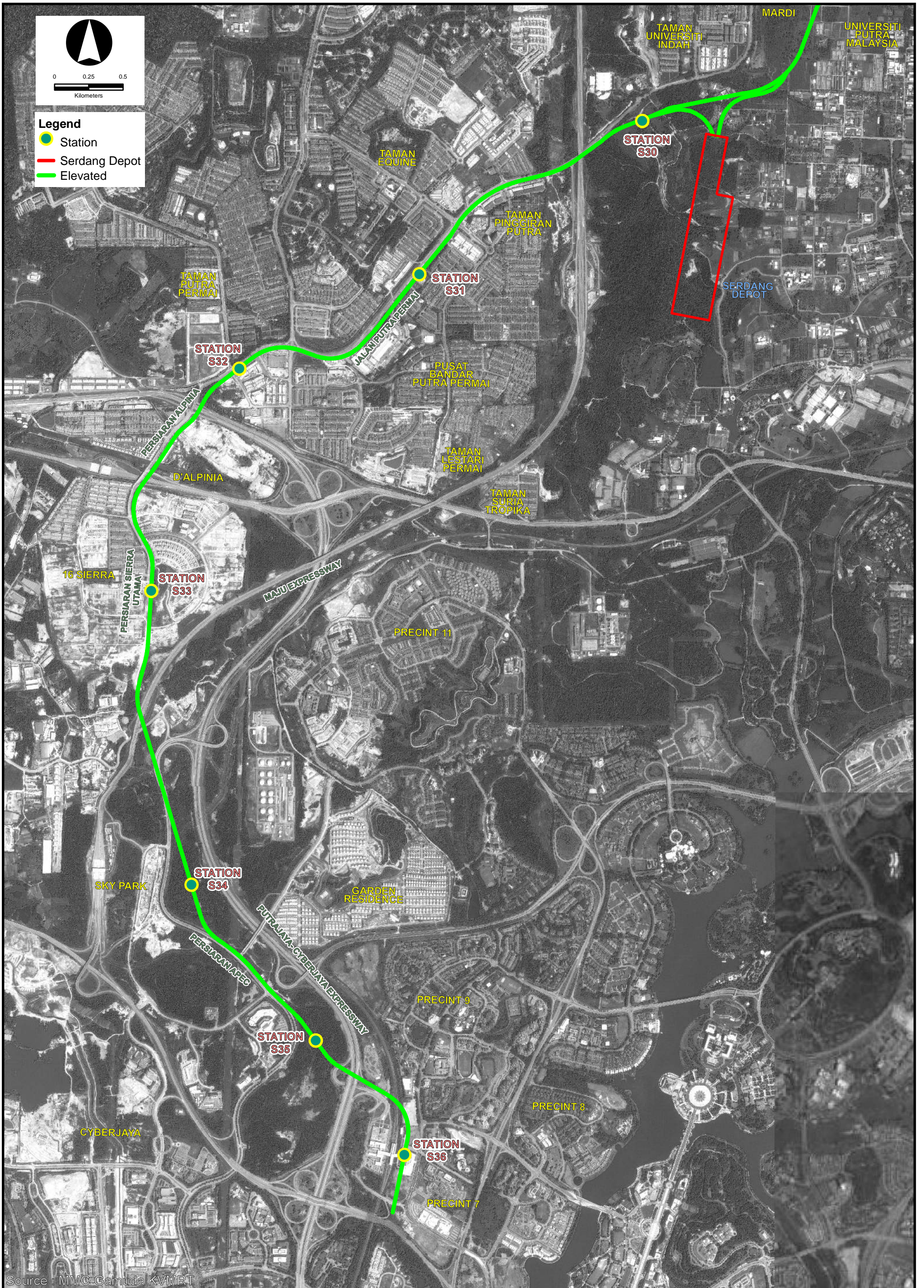


Source: MMC Gamuda KVMRT



Figure ES-7

Southern Elevated Segment 1



Source : MMC Gamuda KVMRT



Figure ES-8

Southern Elevated Segment 2



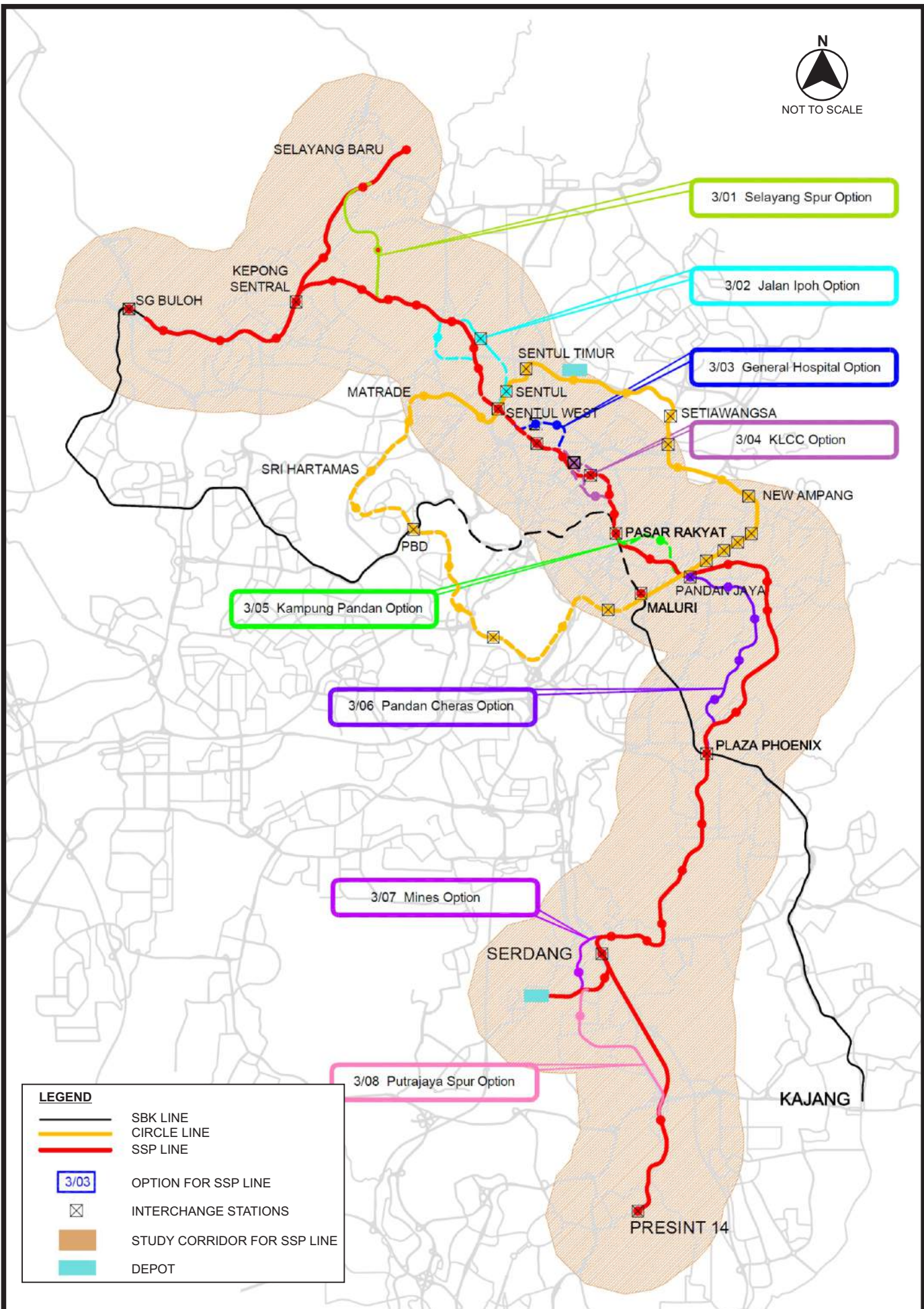


Figure ES-9

Feasibility Study Corridor and Alignment Options for SSP Line