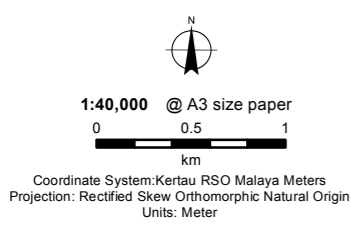
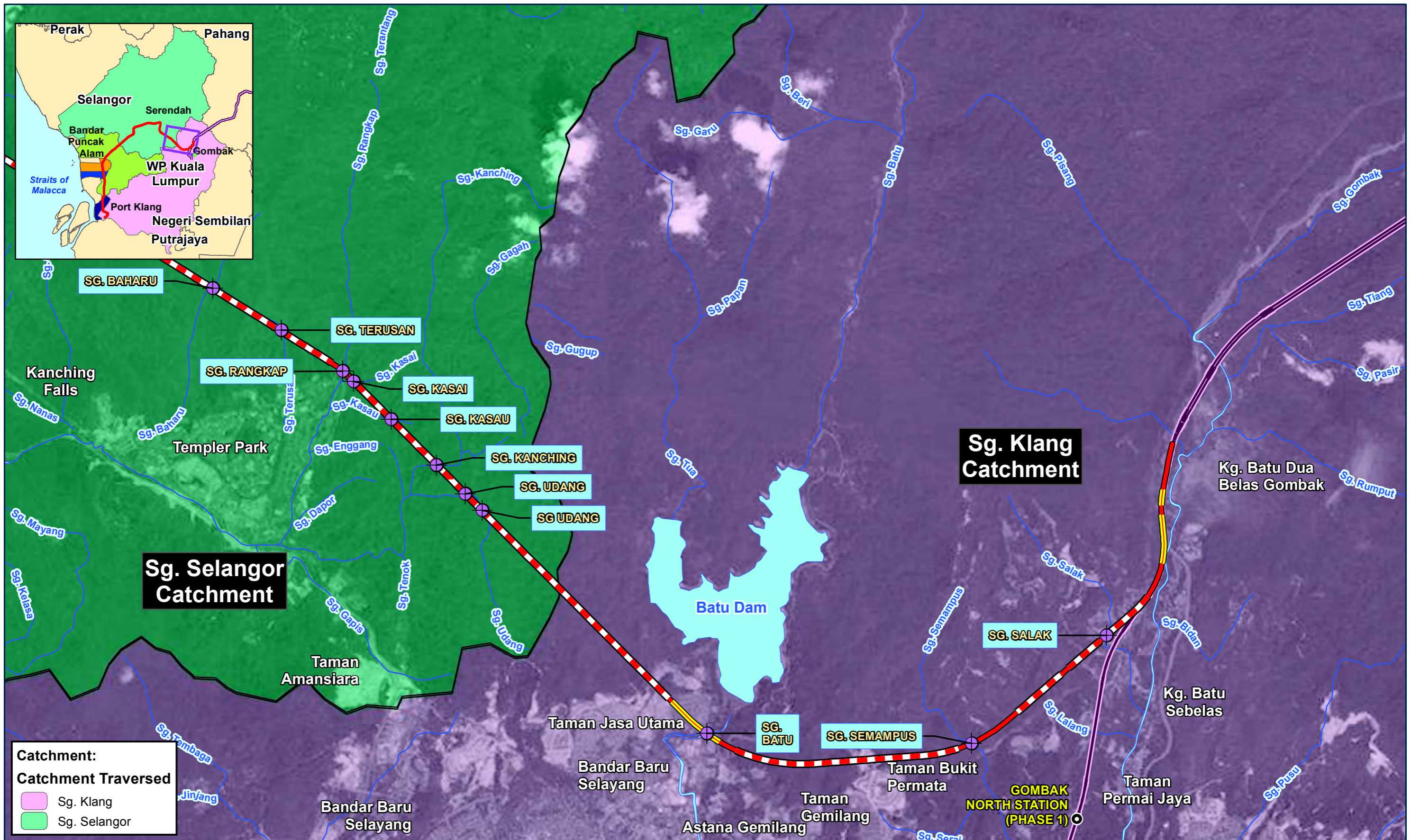


River Crossings along Segment 1: Kelantan

Date	26-09-2017
Project No	EJ 616
Produced by	AFZ
Revision	A

FIGURE 6.6-1

Disclaimer: This map is produced solely for its intended purpose only. All reasonable care has been taken to ensure that the information presented here is accurate, subject to the availability and quality of data sources used. There is however no guarantee that this map is free from errors or omissions. Its use for any other purposes is therefore at the sole risk of the user. Source: ERE Consulting Group (2017), OpenStreetMap (2017), Department of Irrigation and Drainage (2016) G:\Project\EJ 616 The East Coast Rail Link - Phase 2)\Maps\MXD\EIA\Fig6.2-1_RiverCatchmentCrossing_North.mxd



Legend

- Proposed Station
- Proposed Alignment (At-grade)
- Proposed Alignment (Elevated)
- Proposed Alignment (Tunnel)
- Water body
- Rivers/ Streams
- ECRL Phase 1
- River Crossings
- Pond
- Plantation Drain
- Drain

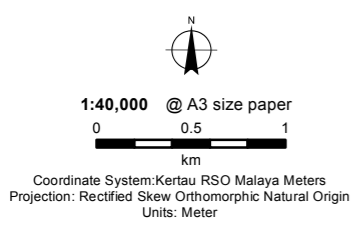
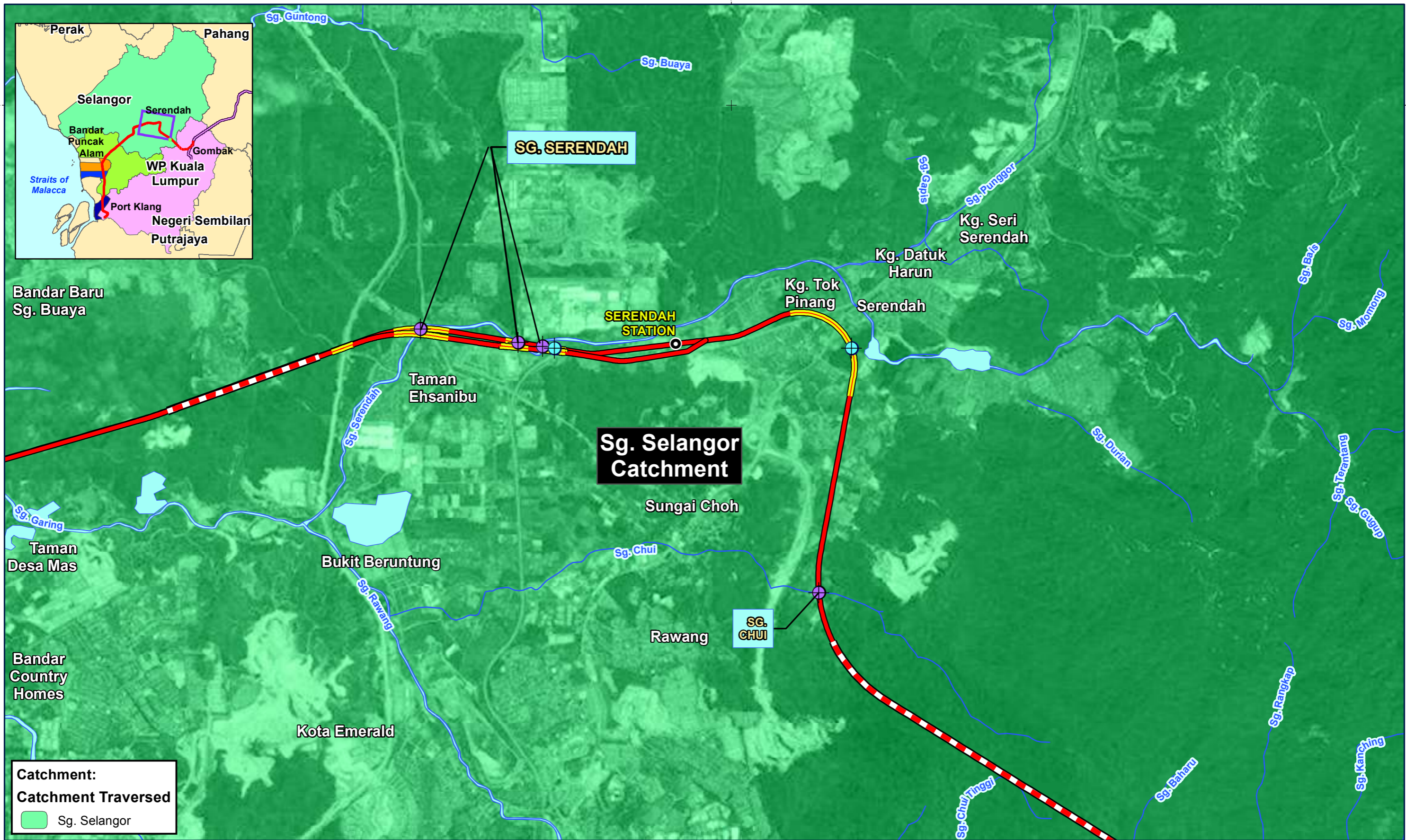
ere consulting group

River Crossing along Segment 2A: Gombak - Serendah

Date	04-10-2017
Project No	EJ 616
Produced by	AFZ
Revision	A

FIGURE 6.6-2a

Disclaimer: This map is produced solely for its intended purpose only. All reasonable care has been taken to ensure that the information presented here is accurate, subject to the availability and quality of data sources used. There is however no guarantee that this map is free from errors or omissions. Its use for any other purposes is therefore at the sole risk of the user.
 Source: ERE Consulting Group (2017), OpenStreet Map (2017), JPBD (2017), Satellite Imagery courtesy of USGS (2016) G:\Project\EJ 616 The East Coast Rail Link - Phase (2)\Maps\WxD\EIA\Fig6.2-2a-f_RiverCatchmentCrossing_South.mxd



Legend	
	Proposed Station
	Proposed Alignment (At-grade)
	Proposed Alignment (Elevated)
	Proposed Alignment (Tunnel)
	Water body
	Rivers/ Streams
	River Crossings
	Pond
	Plantation Drain
	Drain

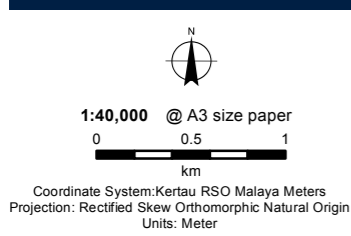
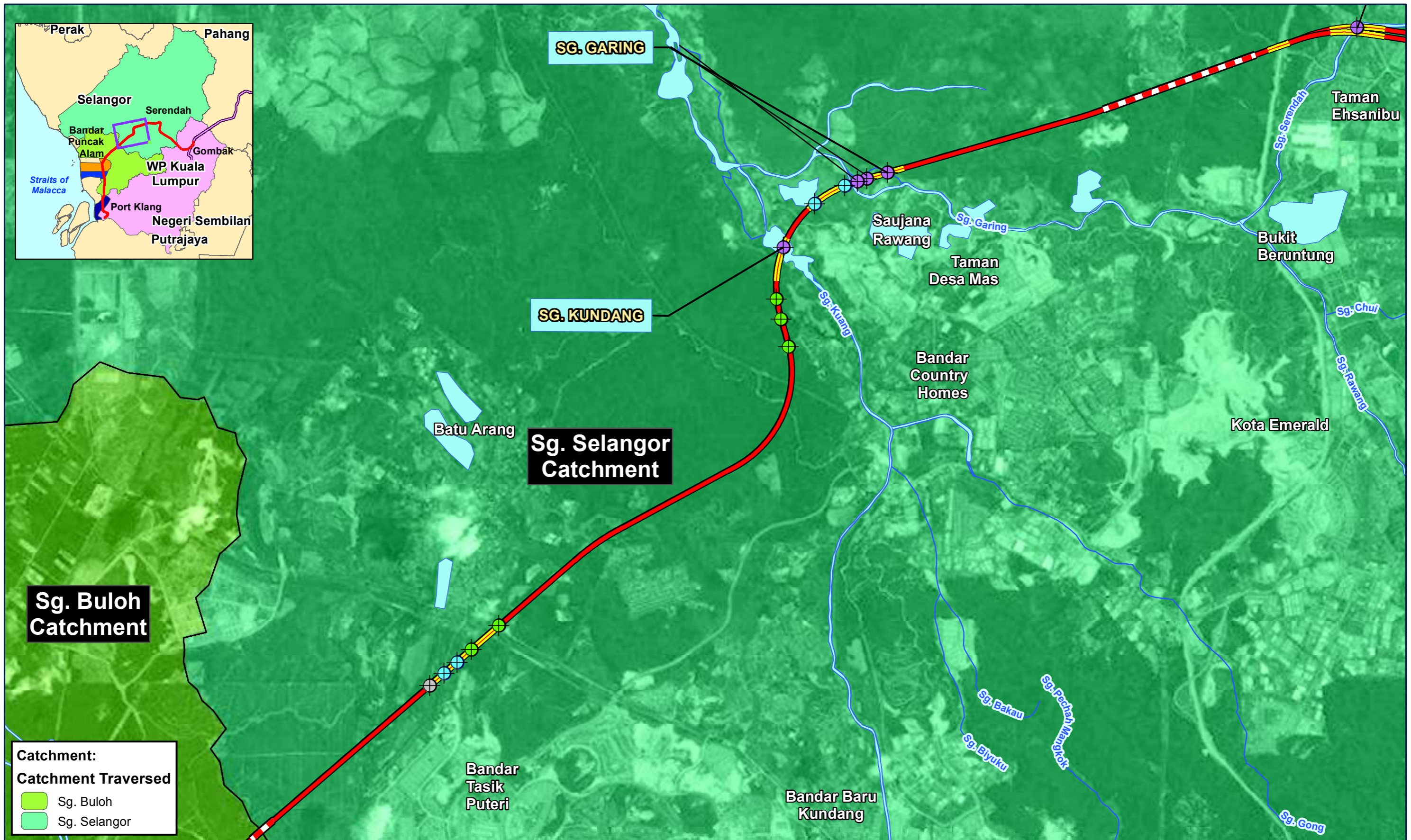


River Crossing along Segment 2A: Gombak - Serendah

Date	04-10-2017
Project No	EJ 616
Produced by	AFZ
Revision	A

FIGURE 6.6-2b

Disclaimer: This map is produced solely for its intended purpose only. All reasonable care has been taken to ensure that the information presented here is accurate, subject to the availability and quality of data sources used. There is however no guarantee that this map is free from errors or omissions. Its use for any other purposes is therefore at the sole risk of the user. Source: ERE Consulting Group (2017), OpenStreet Map (2017), JPBD (2017), Satellite Imagery courtesy of USGS (2016) G:\Project\EJ 616 The East Coast Rail Link - Phase (2)\Maps\WxD\EIA\Fig6.2-2a-f_RiverCatchmentCrossing_South.mxd



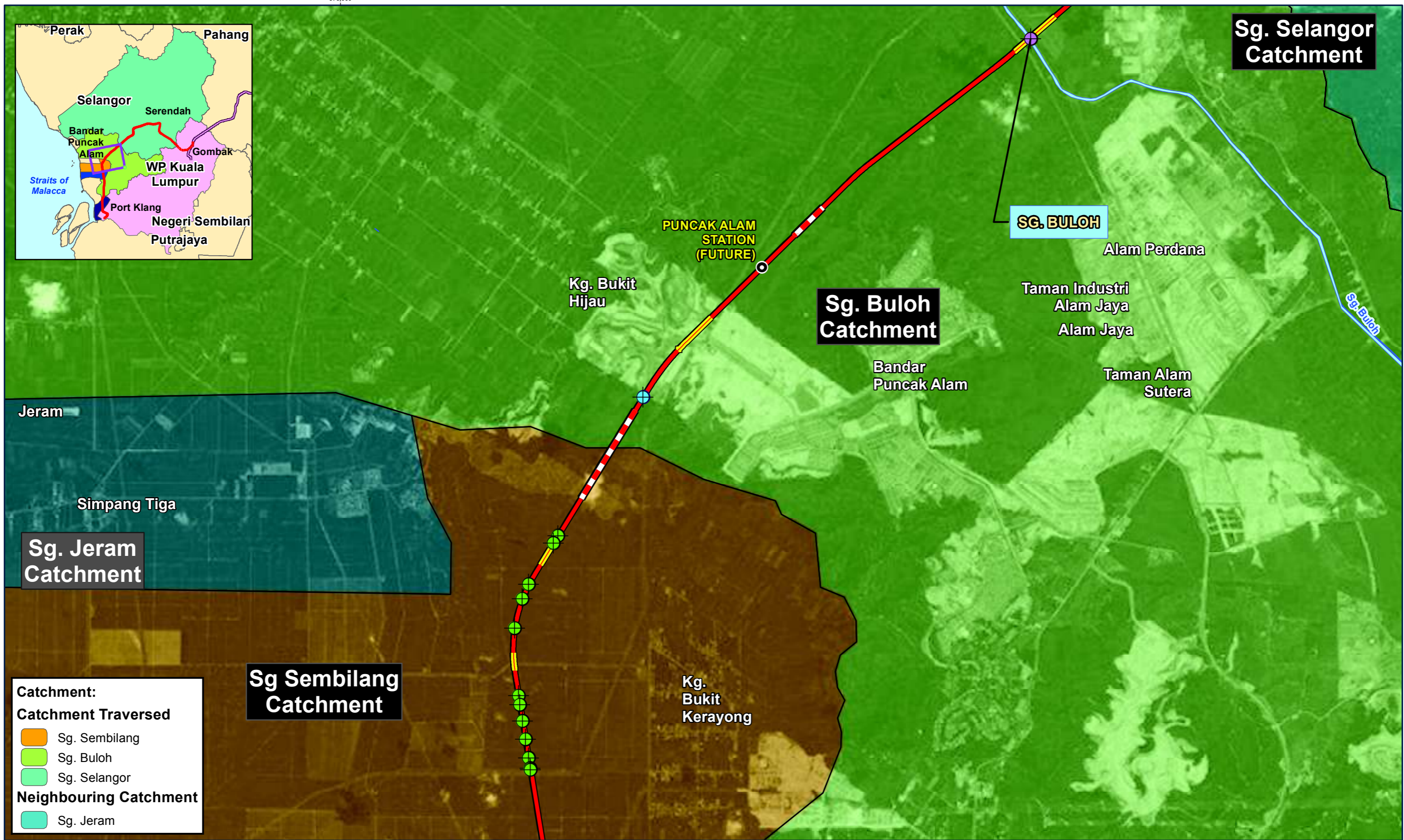
Legend	
	Proposed Station
	Proposed Alignment (At-grade)
	Proposed Alignment (Elevated)
	Proposed Alignment (Tunnel)
	Rivers/ Streams
	Pond
	River Crossings
	Plantation Drain
	Drain

River Crossing along Segment 2B: Serendah - Bandar Puncak Alam

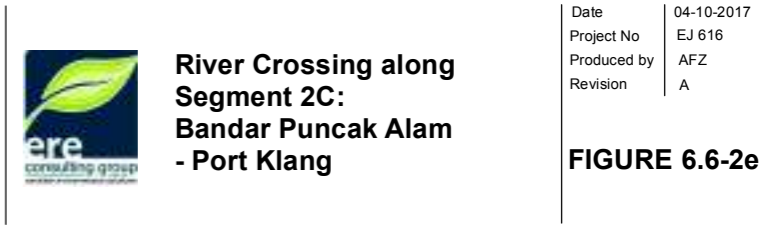
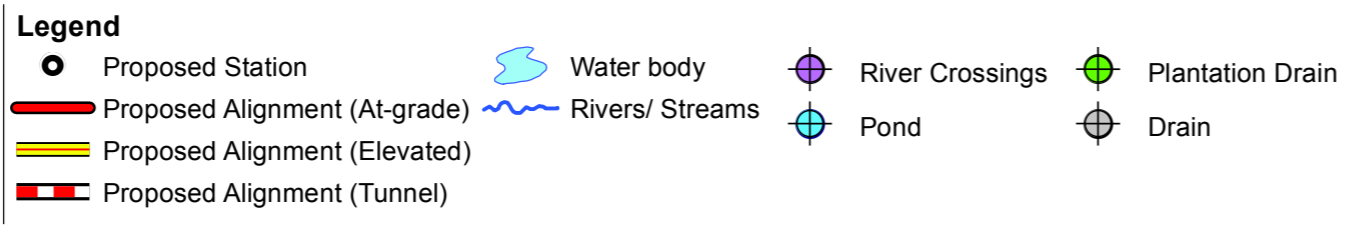
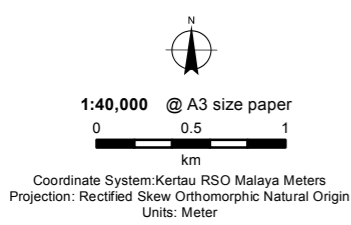
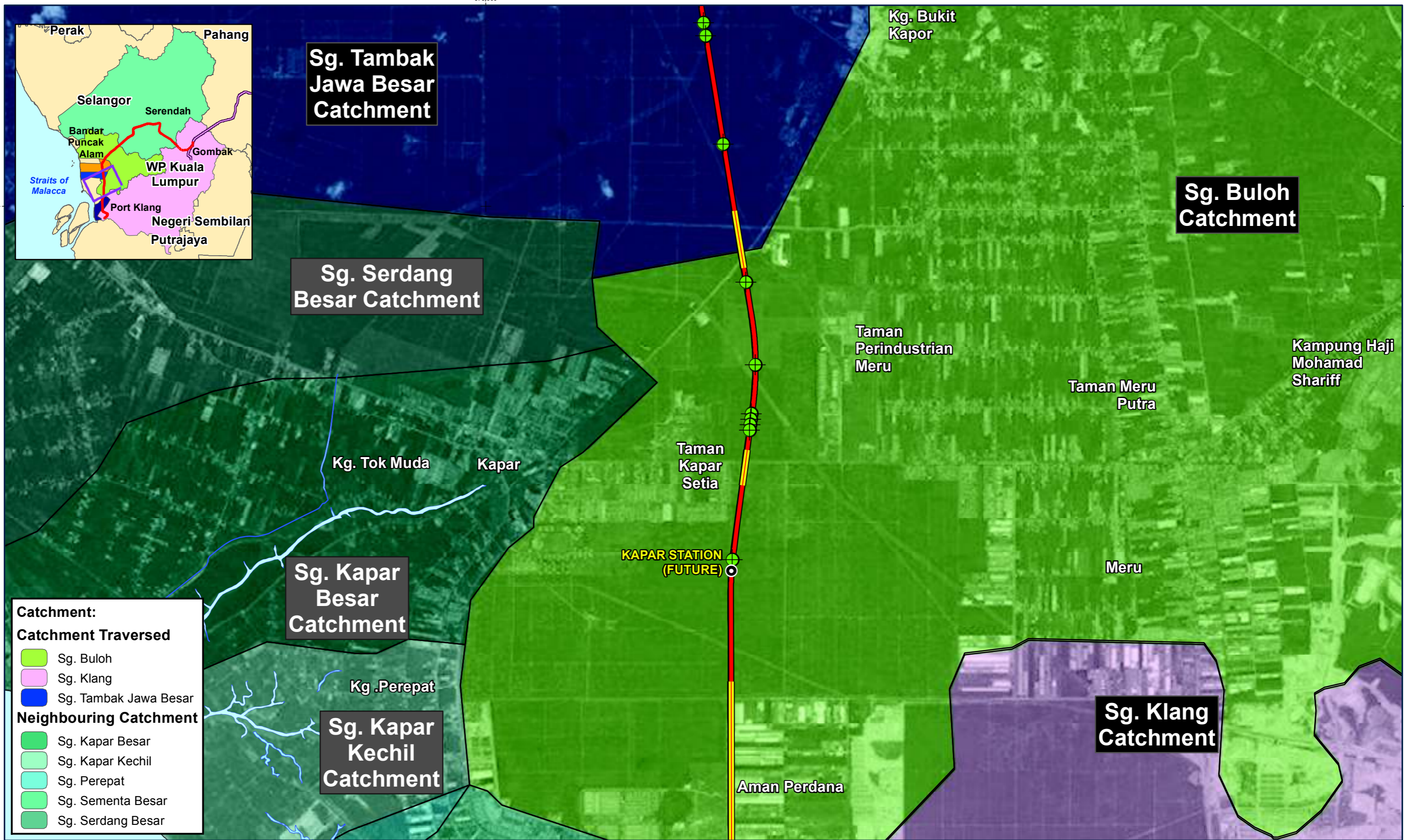
Date	04-10-2017
Project No	EJ 616
Produced by	AFZ
Revision	A

Disclaimer: This map is produced solely for its intended purpose only. All reasonable care has been taken to ensure that the information presented here is accurate, subject to the availability and quality of data sources used. There is however no guarantee that this map is free from errors or omissions. Its use for any other purposes is therefore at the sole risk of the user.
 Source: ERE Consulting Group (2017), OpenStreet Map (2017), JPBD (2017), Satellite Imagery courtesy of USGS (2016). G:\Project\EJ 616 The East Coast Rail Link - Phase (2)\Maps\WXD\EIA\Fig6.2-2a-f_RiverCatchmentCrossing_South.mxd

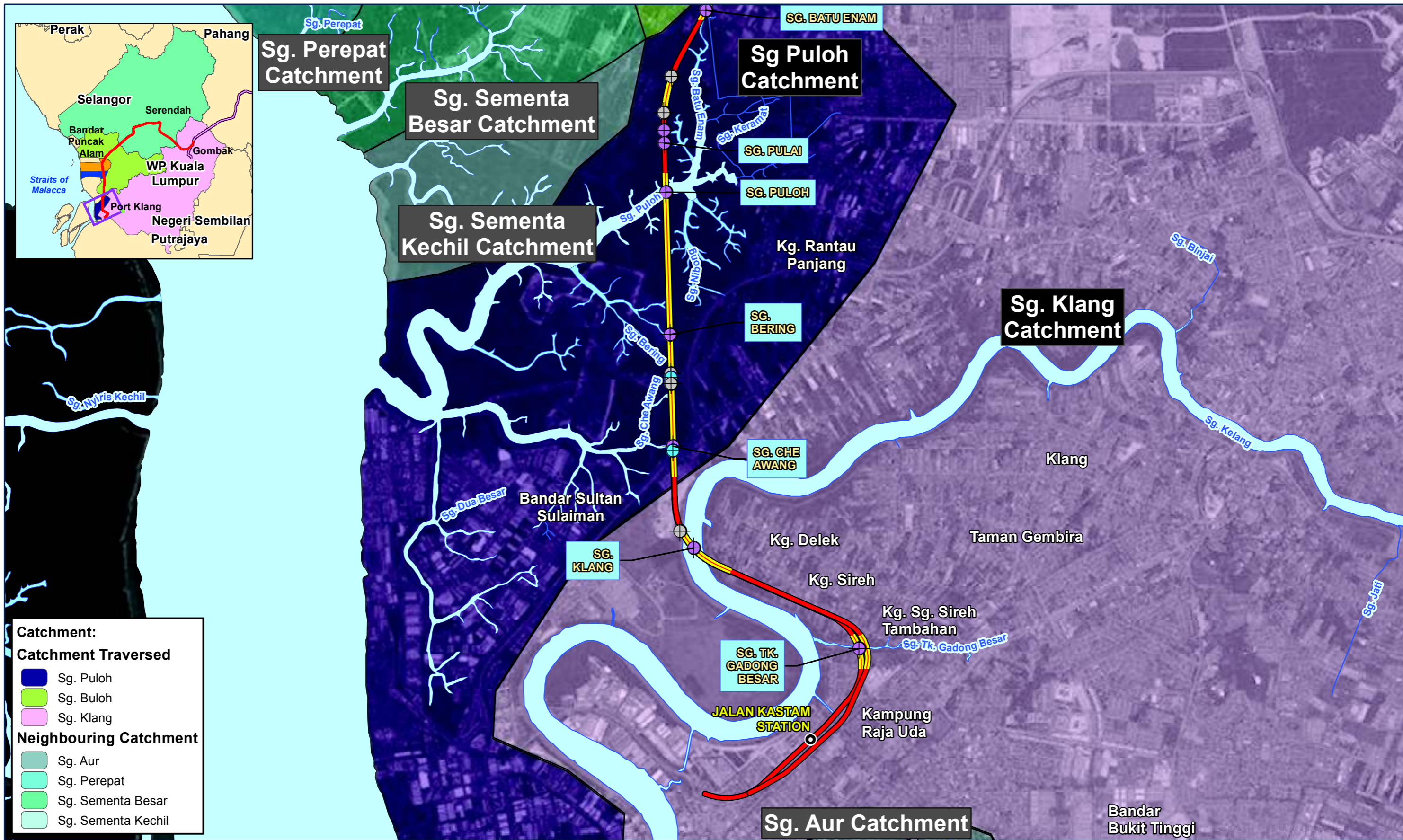
FIGURE 6.6-2c



Disclaimer: This map is produced solely for its intended purpose only. All reasonable care has been taken to ensure that the information presented here is accurate, subject to the availability and quality of data sources used. There is however no guarantee that this map is free from errors or omissions. Its use for any other purposes is therefore at the sole risk of the user.
 Source: ERE Consulting Group (2017), OpenStreet Map (2017), JPBD (2017), Satellite Imagery courtesy of USGS (2016) G:\Project\EJ 616 The East Coast Rail Link - Phase (2)\Maps\WxD\EA\Fig6.2-2a-f_RiverCatchmentCrossing_South.mxd



Disclaimer: This map is produced solely for its intended purpose only. All reasonable care has been taken to ensure that the information presented here is accurate, subject to the availability and quality of data sources used. There is however no guarantee that this map is free from errors or omissions. Its use for any other purposes is therefore at the sole risk of the user.
Source: ERE Consulting Group (2017), OpenStreet Map (2017), JPBD (2017), Satellite Imagery courtesy of USGS (2016) G:\Project\EJ 616 The East Coast Rail Link - Phase (2)\Maps\WMD\EIA\Fig6.2-2a-f_RiverCatchmentCrossing_South.mxd



Catchment:

Catchment Traversed

- Sg. Puloh
- Sg. Buloh
- Sg. Klang

Neighbouring Catchment

- Sg. Aur
- Sg. Perepat
- Sg. Sementa Besar
- Sg. Sementa Kechil

1:40,000 @ A3 size paper

0 0.5 1 km

Coordinate System: Kertau RSO Malaya Meters
Projection: Rectified Skew Orthomorphic Natural Origin
Units: Meter

Legend

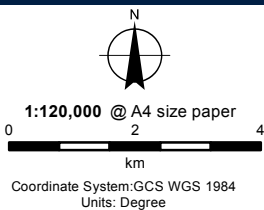
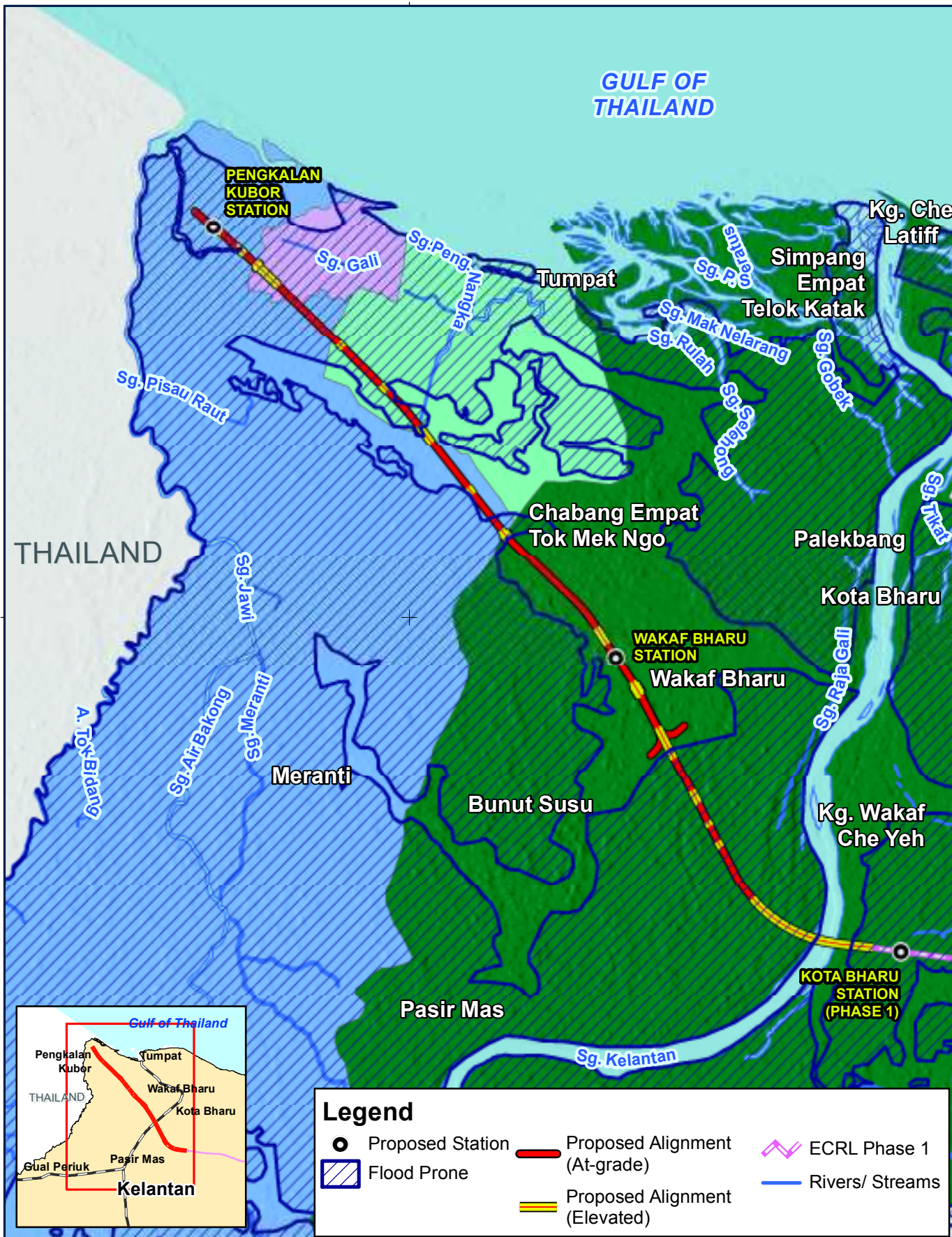
- Proposed Station
- Water body
- River Crossings
- Plantation Drain
- Proposed Alignment (At-grade)
- Rivers/ Streams
- Pond
- Drain
- Proposed Alignment (Elevated)
- Proposed Alignment (Tunnel)

River Crossing along Segment 2C: Bandar Puncak Alam - Port Klang

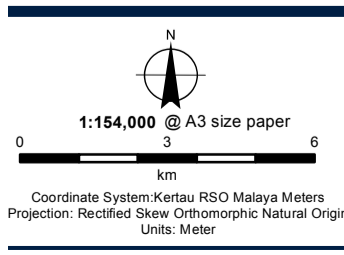
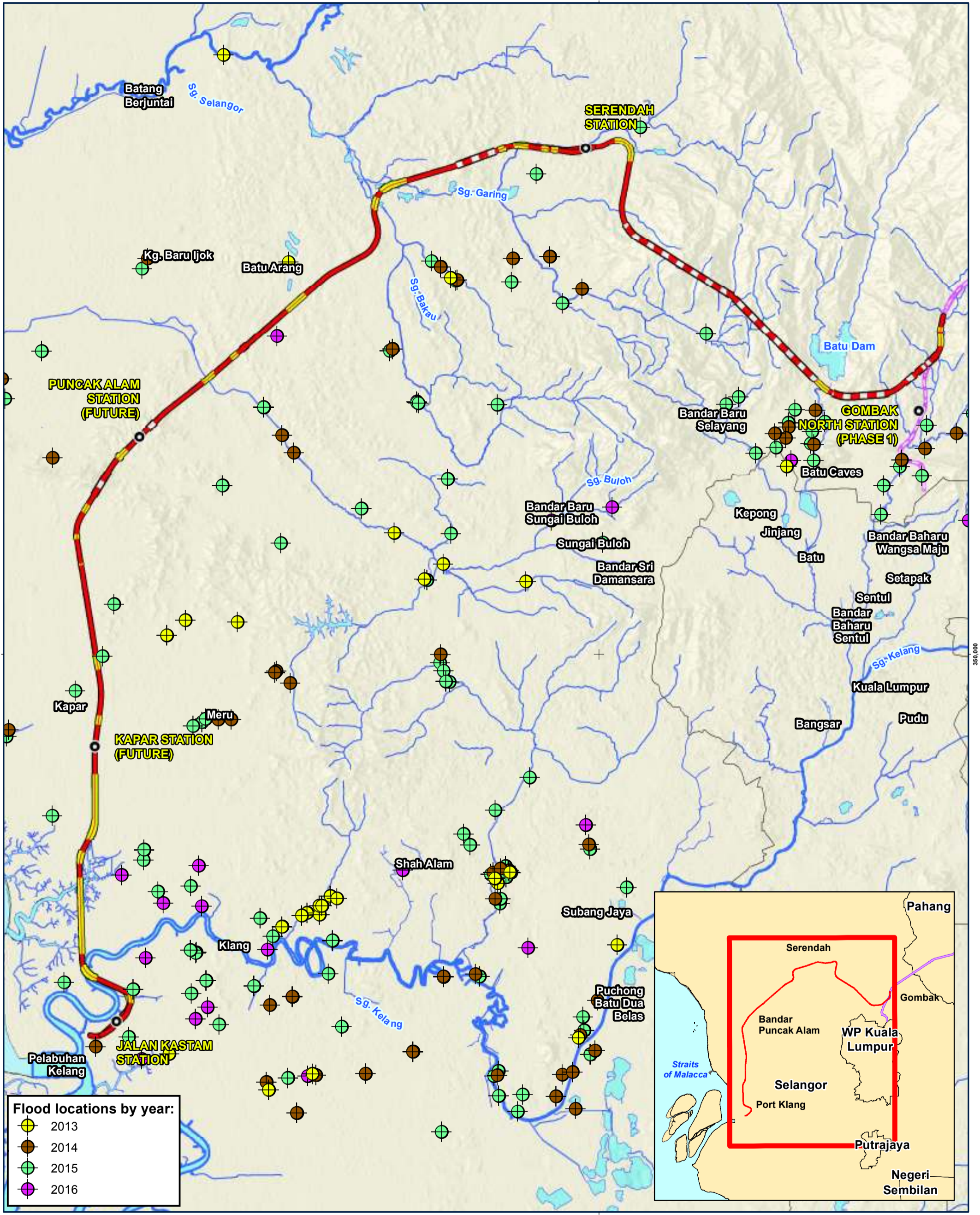
Date	04-10-2017
Project No	EJ 616
Produced by	AFZ
Revision	A

FIGURE 6.6-2f

Disclaimer: This map is produced solely for its intended purpose only. All reasonable care has been taken to ensure that the information presented here is accurate, subject to the availability and quality of data sources used. There is however no guarantee that this map is free from errors or omissions. Its use for any other purposes is therefore at the sole risk of the user.
Source: ERE Consulting Group (2017), OpenStreet Map (2017), JPBD (2017), Satellite Imagery courtesy of USGS (2016) G:\Project\EJ 616 The East Coast Rail Link - Phase (2)\Maps\WMD\EIA\Fig6.2-2a-f_RiverCatchmentCrossing_South.mxd



Date	27-09-2017
Project No	EJ 616
Produced by	AFZ
Revision	A



Legend

- Proposed Station
- Proposed Alignment (At-)
- Proposed Alignment
- Proposed Alignment
- Water body
- Rivers/ Streams

Flood Prone Areas Along the Alignment in Selangor

Date	04-10-2017
Project No	EJ 616
Produced by	AFZ
Revision	A

FIGURE 6.6-4

Disclaimer: This map is produced solely for its intended purpose only. All reasonable care has been taken to ensure that the information presented here is accurate, subject to the availability and quality of data sources used. There is however no guarantee that this map is free from errors or omissions. Its use for any other purposes is therefore at the sole risk of the user.
 Source: ERE Consulting Group (2016), Roads and localities courtesy of OpenStreetMap (2016), Department of Irrigation and Drainage (2016) G:\Project\EJ 616 The East Coast Rail Link - Phase 2\Maps\WXD\EIA\Fig6.11-2_FloodProne_South.mxd