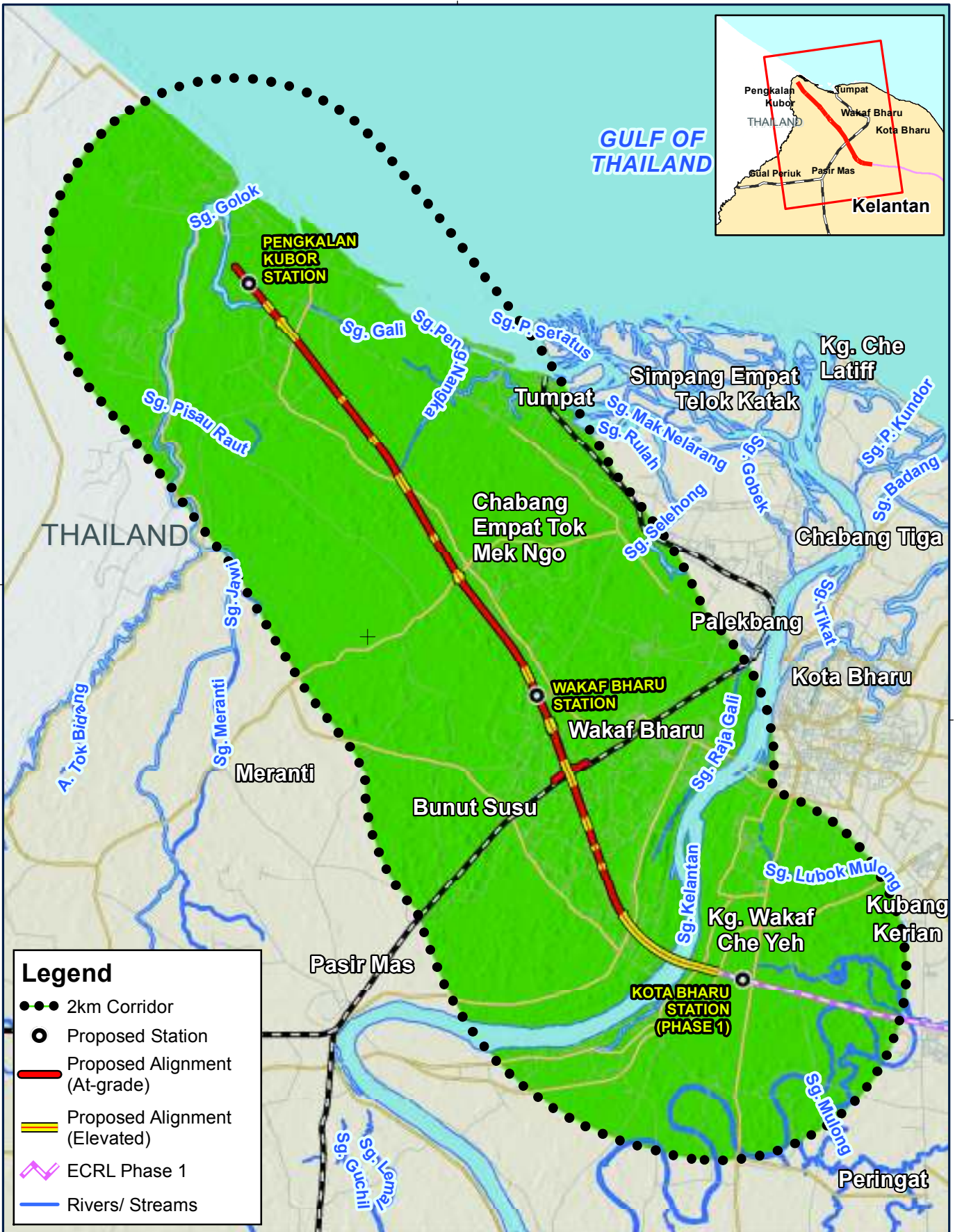


Date	28-09-2017
Project No	EJ 616
Produced by	AFZ
Revision	A

FIGURE 6.2-1

Disclaimer: This map is produced solely for its intended purpose only. All reasonable care has been taken to ensure that the information presented here is accurate, subject to the availability and quality of data sources used. There is however no guarantee that this map is free from errors or omissions. Its use for any other purposes is therefore at the sole risk of the user.
Source: ERE Consulting Group (2017), OpenStreetMap (2017), Department of Irrigation and Drainage (2016) G:\Project\EJ 616 The East Coast Rail Link - Phase (2)\Maps\MXD\EIA\Fig6.8-1_Elevation_North.mxd



Legend

- 2km Corridor
- Proposed Station
- Proposed Alignment (At-grade)
- Proposed Alignment (Elevated)
- ECRL Phase 1
- Rivers/ Streams

1:140,000 @ A4 size paper
 0 2.5 5 km
 Coordinate System: GCS WGS 1984
 Units: Degree

Slope (Degree)

- 0 - 15
- 16 - 25
- 26 - 35
- > 35

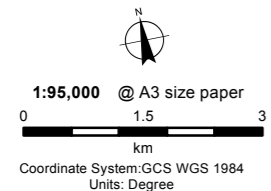
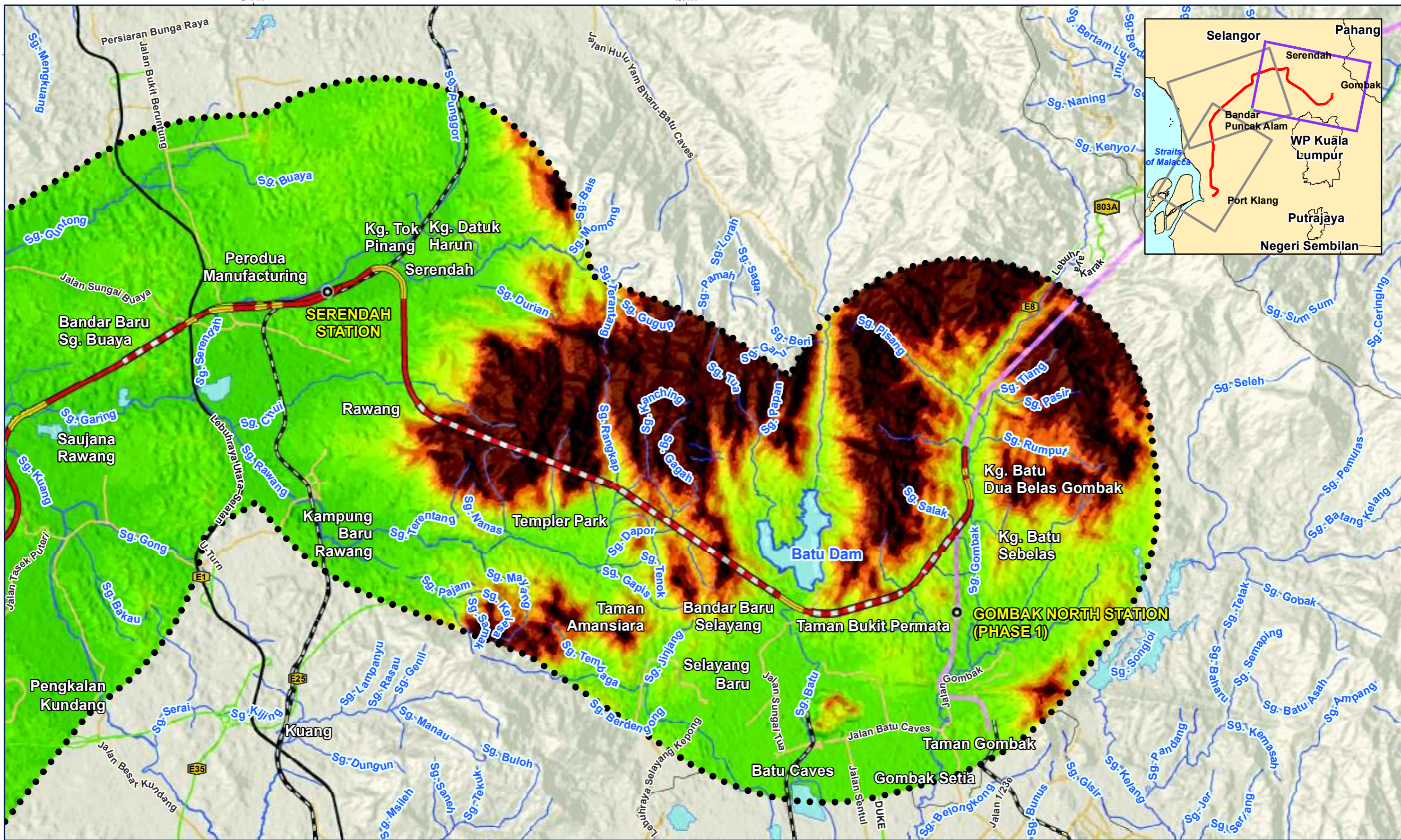


Slope Analysis of the Alignment (Kelantan)

Date	04-10-2017
Project No	EJ 616
Produced by	AFZ
Revision	A

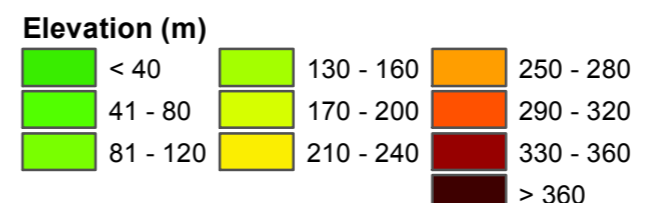
FIGURE 6.2-2

Disclaimer: This map is produced solely for its intended purpose only. All reasonable care has been taken to ensure that the information presented here is accurate, subject to the availability and quality of data sources used. There is however no guarantee that this map is free from errors or omissions. Its use for any other purposes is therefore at the sole risk of the user.
 Source: ERE Consulting Group (2017), OpenStreetMap (2017), Department of Irrigation and Drainage (2016) G:\Project\EJ 616 The East Coast Rail Link - Phase (2)\Maps\MXD\EIA\Fig6.8-3_Slope_North.mxd



Legend

- Proposed Station
- Proposed Alignment (At-grade)
- Proposed Alignment (Elevated)
- Proposed Alignment (Tunnel)
- North-South Highway
- Existing Railway
- Highway
- Major Roads
- Water body
- Rivers/ Streams
- 2km Corridor
- ECRL Phase 1

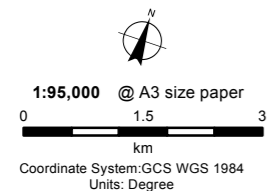
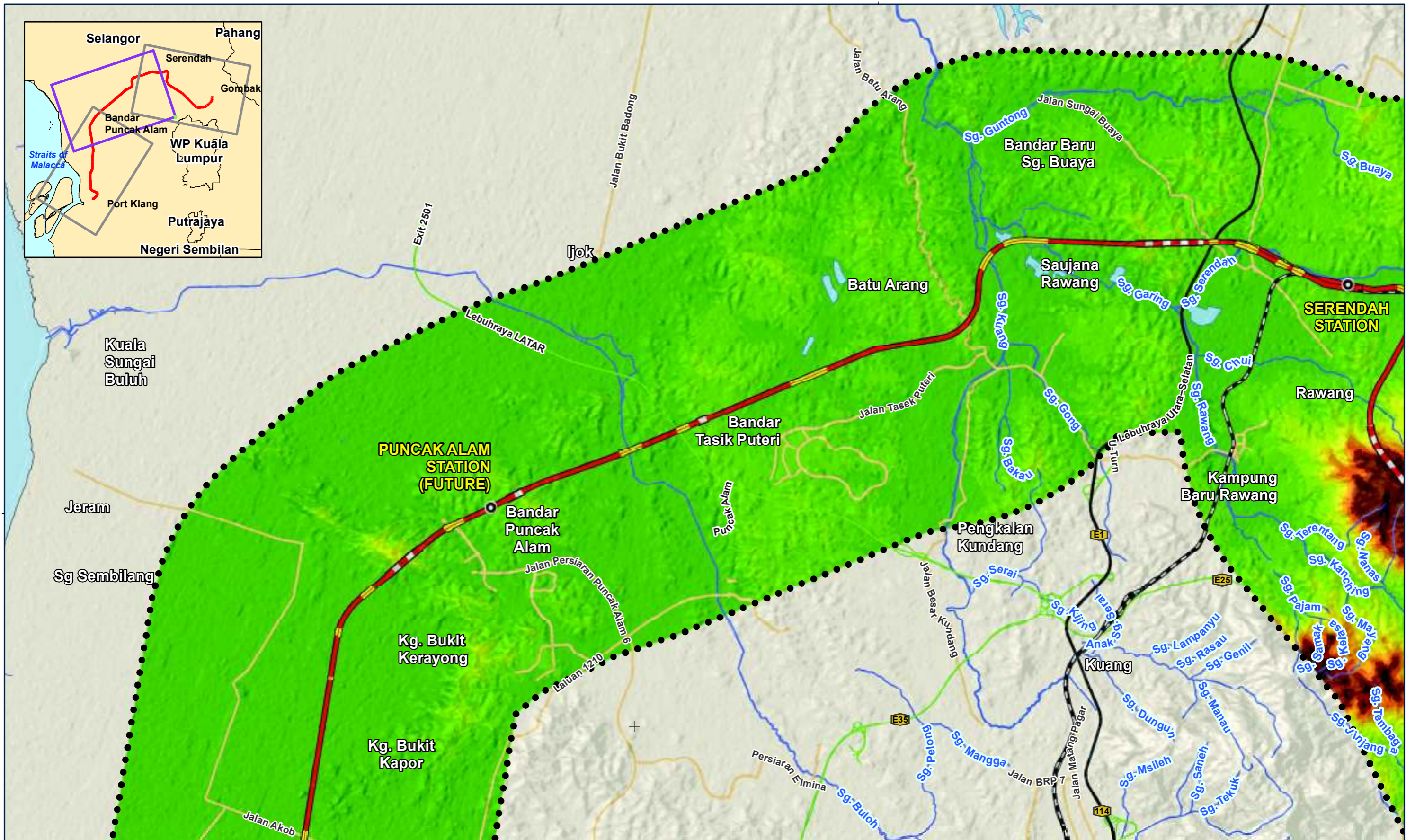


Elevation Along the Alignment (Segment 2A) : Gombak North - Serendah

Date	27-09-2017
Project No	EJ 616
Produced by	AFZ
Revision	A

FIGURE 6.2-3a

Disclaimer: This map is produced solely for its intended purpose only. All reasonable care has been taken to ensure that the information presented here is accurate, subject to the availability and quality of data sources used. There is however no guarantee that this map is free from errors or omissions. Its use for any other purposes is therefore at the sole risk of the user.
 Source: ERE Consulting Group (2017), OpenStreet Map (2017), JPBD (2017), Satellite Imagery courtesy of USGS (2016). G:\Project\EJ 616 The East Coast Rail Link - Phase (2)\Maps\WxD\EA\Fig.6.2a-c_Elev_South.mxd



Legend

- Proposed Station
- Proposed Alignment (At-grade)
- Proposed Alignment (Elevated)
- Proposed Alignment (Tunnel)
- North-South Highway
- Existing Railway
- Highway
- Major Roads
- Water body
- Rivers/ Streams
- 2km Corridor

Elevation (m)		
< 40	130 - 160	250 - 280
41 - 80	170 - 200	290 - 320
81 - 120	210 - 240	330 - 360
		> 360

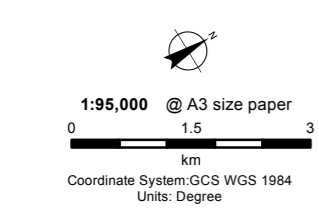
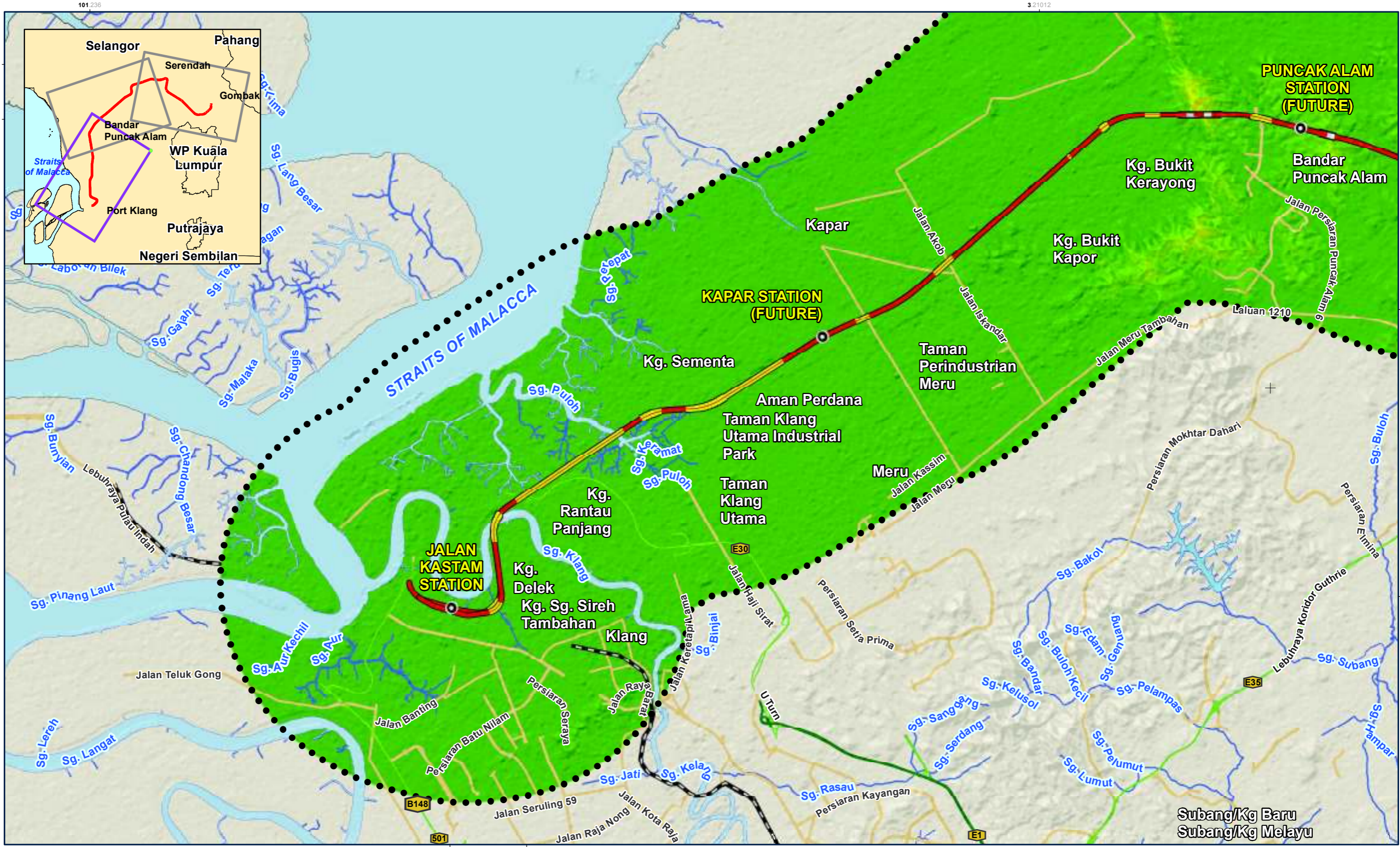


Elevation Along the Alignment (Segment 2B) : Serendah - Bandar Puncak Alam

Date	27-09-2017
Project No	EJ 616
Produced by	AFZ
Revision	A

FIGURE 6.2-3b

Disclaimer: This map is produced solely for its intended purpose only. All reasonable care has been taken to ensure that the information presented here is accurate, subject to the availability and quality of data sources used. There is however no guarantee that this map is free from errors or omissions. Its use for any other purposes is therefore at the sole risk of the user. Source: ERE Consulting Group (2017), OpenStreet Map (2017), JPBD (2017), Satellite Imagery courtesy of USGS (2016). G:\Project\EJ 616 The East Coast Rail Link - Phase (2)\Maps\XD\EIA\Fig6.2-3a-c_Elev_South.mxd



Legend	
	Proposed Station
	Proposed Alignment (At-grade)
	Proposed Alignment (Elevated)
	Proposed Alignment (Tunnel)
	Existing Railway
	Highway
	Major Roads
	Water body
	Rivers/ Streams
	2km Corridor

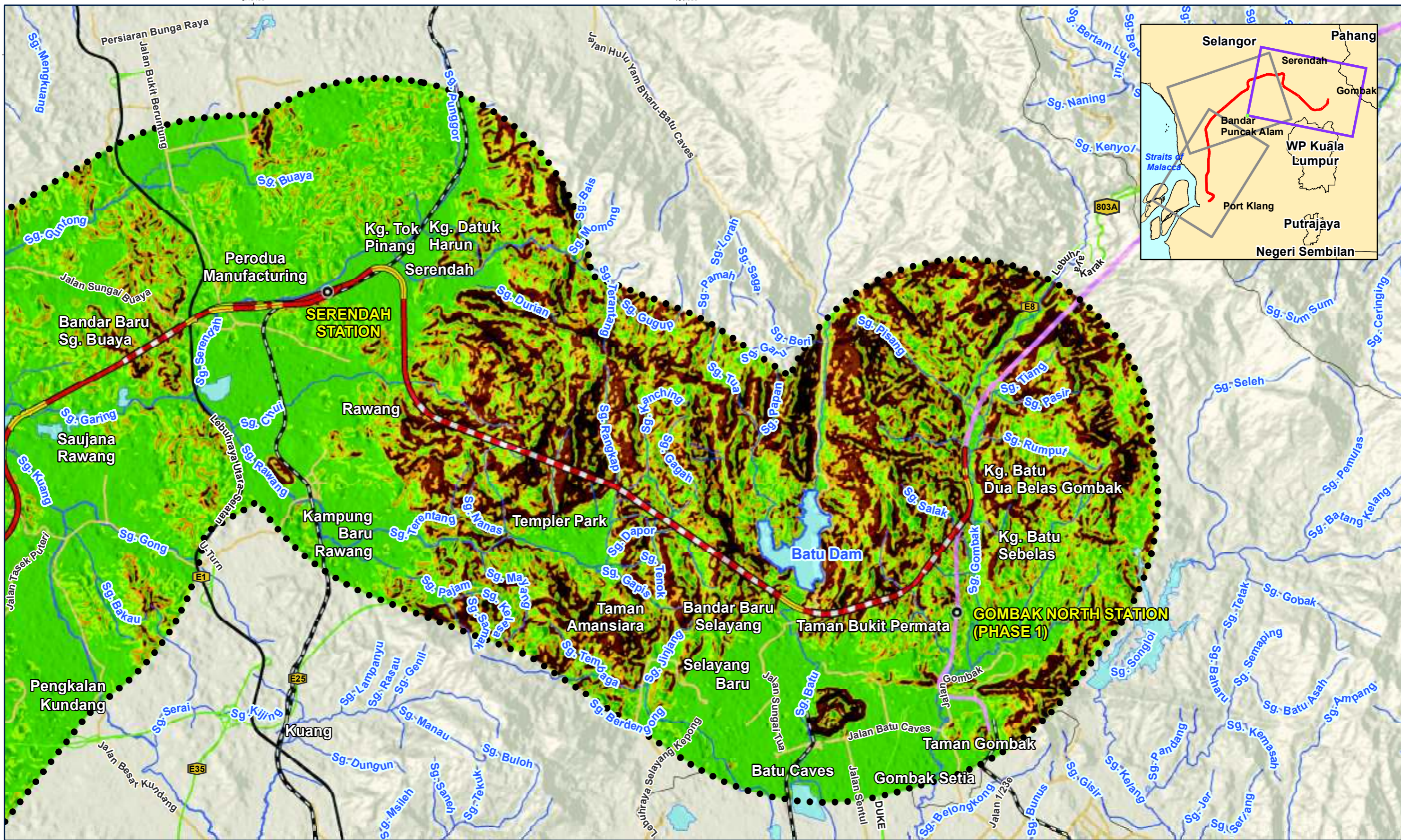
Elevation (m)			
	< 40		250 - 280
	41 - 80		170 - 200
	81 - 120		210 - 240
	130 - 160		290 - 320
	170 - 200		330 - 360
	250 - 280		> 360

Elevation Along the Alignment (Segment 2C) : Bandar Puncak Alam - Port Klang

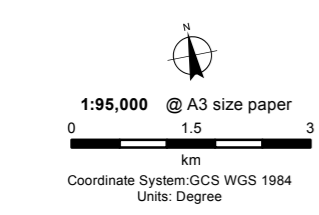
Date	27-09-2017
Project No	EJ 616
Produced by	AFZ
Revision	A

FIGURE 6.2-3c

Disclaimer: This map is produced solely for its intended purpose only. All reasonable care has been taken to ensure that the information presented here is accurate, subject to the availability and quality of data sources used. There is however no guarantee that this map is free from errors or omissions. Its use for any other purposes is therefore at the sole risk of the user.
 Source: ERE Consulting Group (2017), OpenStreet Map (2017), JPBD (2017), Satellite Imagery courtesy of USGS (2016) G:\Project\EJ 616 The East Coast Rail Link - Phase (2)\Maps\WXD\EIA\Fig.6.2a-c_Elev_South.mxd



101.686 3.21012



Legend

- Proposed Station
- Proposed Alignment (At-grade)
- Proposed Alignment (Elevated)
- Proposed Alignment (Tunnel)
- North-South Highway
- Existing Railway
- Highway
- Major Roads
- Water body
- Rivers/ Streams
- 2km Corridor
- ECRL Phase 1

Slope (Degree)

- 0 - 15
- 16 - 25
- 26 - 35
- >35

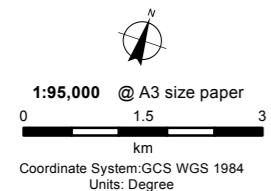
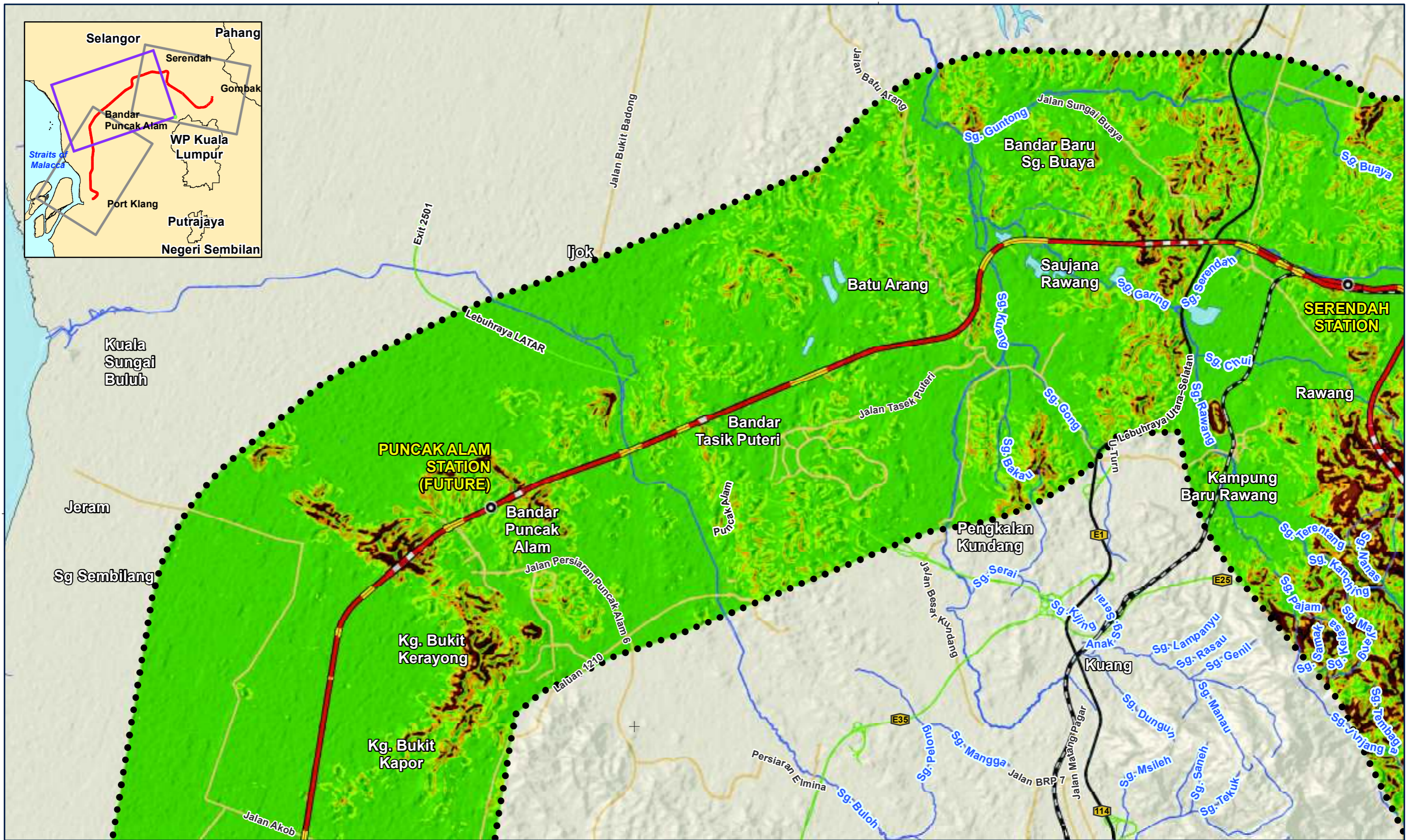


Slope Along the Alignment (Segment 2A) : Gombak North - Serendah

Date	27-09-2017
Project No	EJ 616
Produced by	AFZ
Revision	A

FIGURE 6.2-4a

Disclaimer: This map is produced solely for its intended purpose only. All reasonable care has been taken to ensure that the information presented here is accurate, subject to the availability and quality of data sources used. There is however no guarantee that this map is free from errors or omissions. Its use for any other purposes is therefore at the sole risk of the user.
 Source: ERE Consulting Group (2017), OpenStreet Map (2017), JPBD (2017), Satellite Imagery courtesy of USGS (2016) G:\Project\EJ 616 The East Coast Rail Link - Phase (2)\Maps\WXD\EIA\Fig.6.2-4a-c_Slope_South.mxd



Legend	
	Proposed Station
	Proposed Alignment (At-grade)
	Proposed Alignment (Elevated)
	Proposed Alignment (Tunnel)
	North-South Highway
	Existing Railway
	Highway
	Major Roads
	Water body
	Rivers/ Streams
	2km Corridor

Slope (Degree)	
	0 - 15
	16 - 25
	26 - 35
	>35

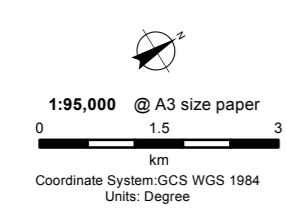
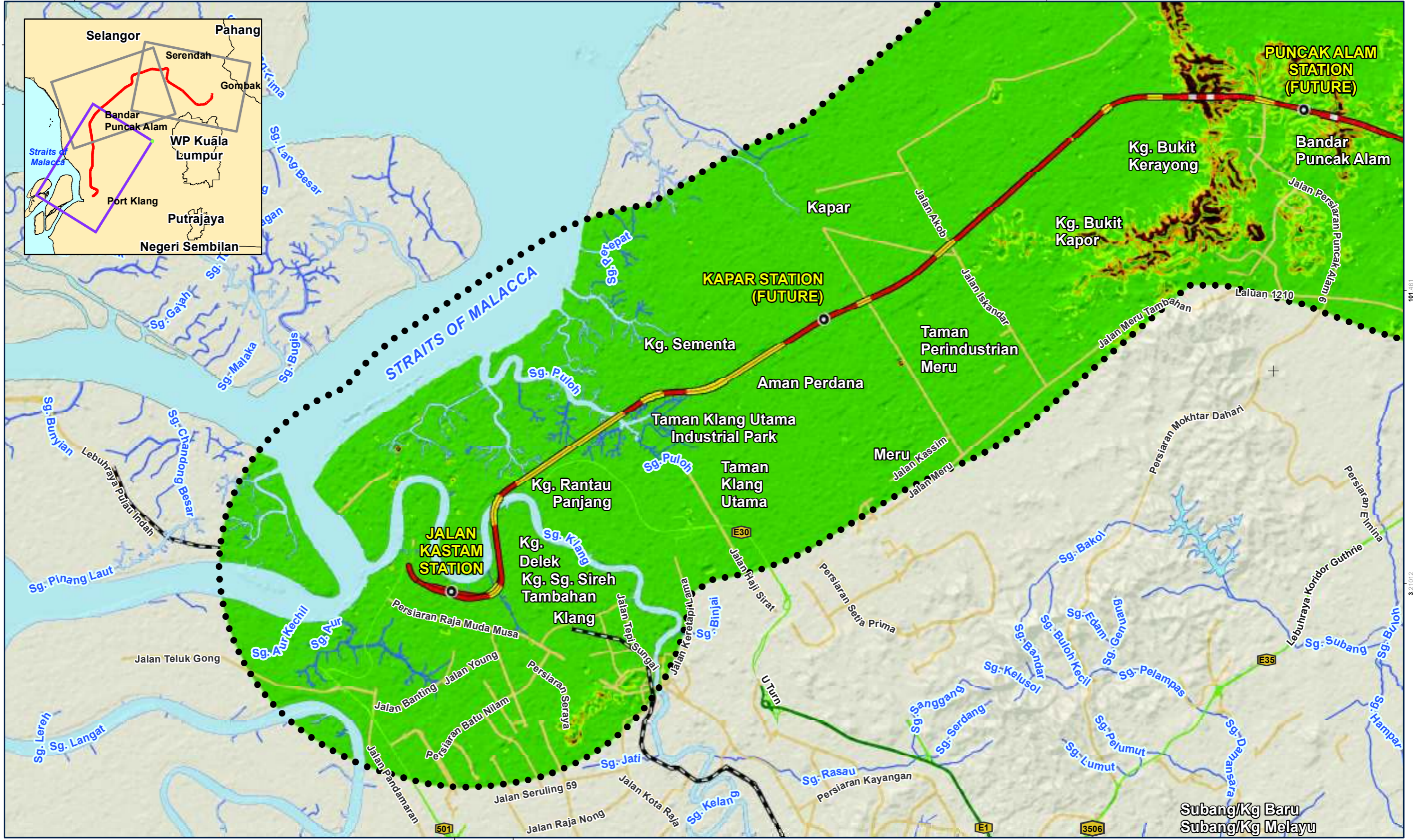


Slope Along the Alignment (Segment 2B) : Serendah - Bandar Puncak Alam

Date	27-09-2017
Project No	EJ 616
Produced by	AFZ
Revision	A

FIGURE 6.2-4b

Disclaimer: This map is produced solely for its intended purpose only. All reasonable care has been taken to ensure that the information presented here is accurate, subject to the availability and quality of data sources used. There is however no guarantee that this map is free from errors or omissions. Its use for any other purposes is therefore at the sole risk of the user. Source: ERE Consulting Group (2017), OpenStreet Map (2017), JPBD (2017), Satellite Imagery courtesy of USGS (2016). G:\Project\EJ 616 The East Coast Rail Link - Phase (2)\Maps\XD\EIA\Fig6.8-4a-c_Slope_South.mxd



Legend	
	Proposed Station
	Proposed Alignment (At-grade)
	Proposed Alignment (Elevated)
	Proposed Alignment (Tunnel)
	North-South Highway
	Existing Railway
	Highway
	Major Roads
	Water body
	Rivers/ Streams
	2km Corridor

Slope (Degree)	
	0 - 15
	16 - 25
	26 - 35
	>35

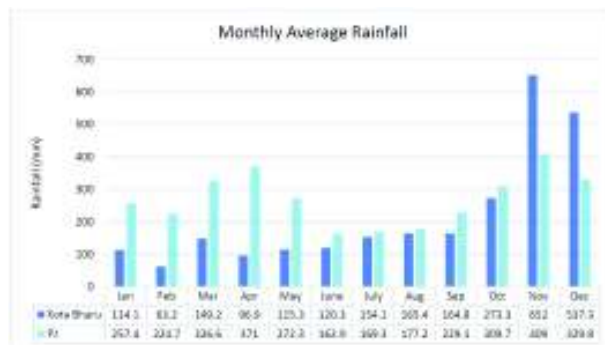
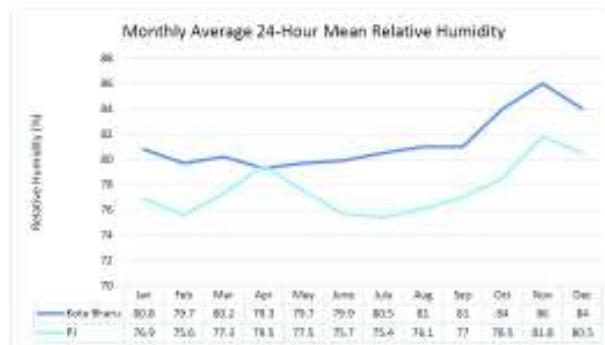


Slope Along the Alignment (Segment 2C) : Bandar Puncak Alam - Port Klang

Date	27-09-2017
Project No	EJ 616
Produced by	AFZ
Revision	A

FIGURE 6.2-4c

Disclaimer: This map is produced solely for its intended purpose only. All reasonable care has been taken to ensure that the information presented here is accurate, subject to the availability and quality of data sources used. There is however no guarantee that this map is free from errors or omissions. Its use for any other purposes is therefore at the sole risk of the user.
 Source: ERE Consulting Group (2017), OpenStreet Map (2017), JPBD (2017), Satellite Imagery courtesy of USGS (2016) G:\Project\EJ 616 The East Coast Rail Link - Phase (2)\Maps\WXD\EIA\Fig6.8-4a-c_Slope_South.mxd

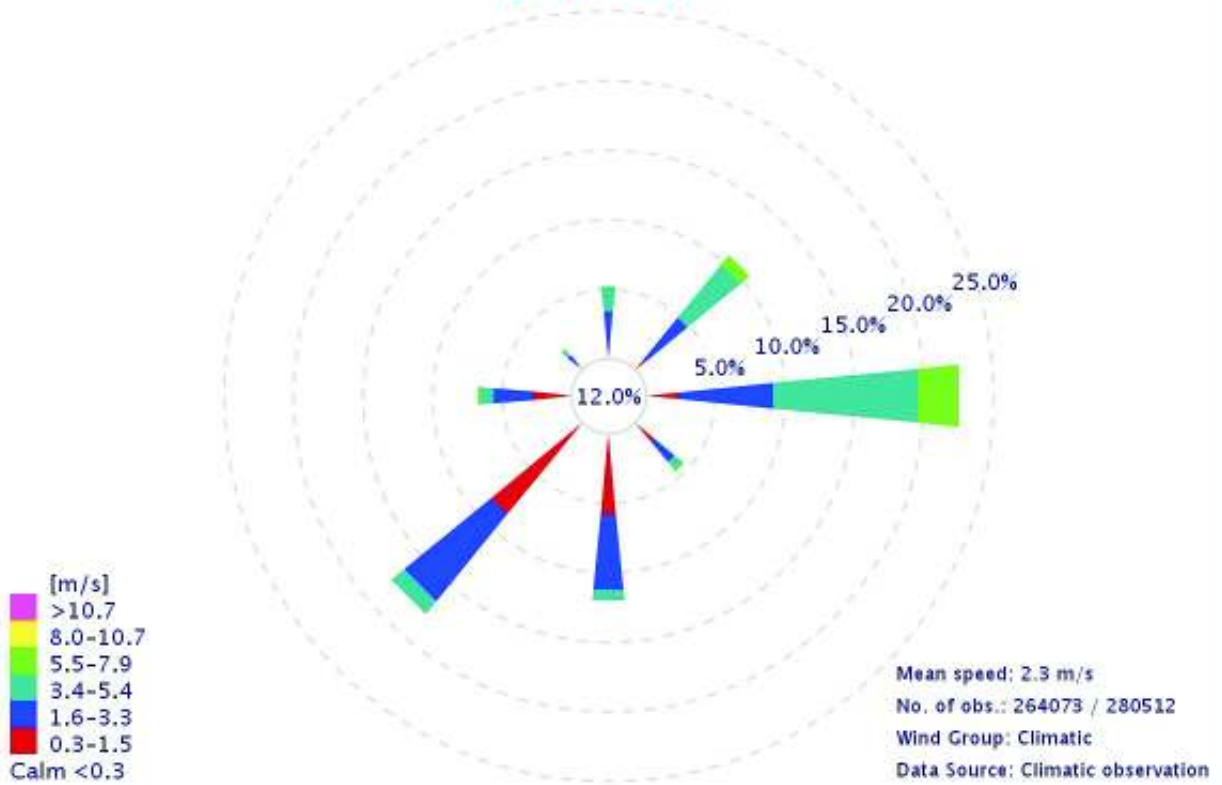


Climate Condition in Project Areas

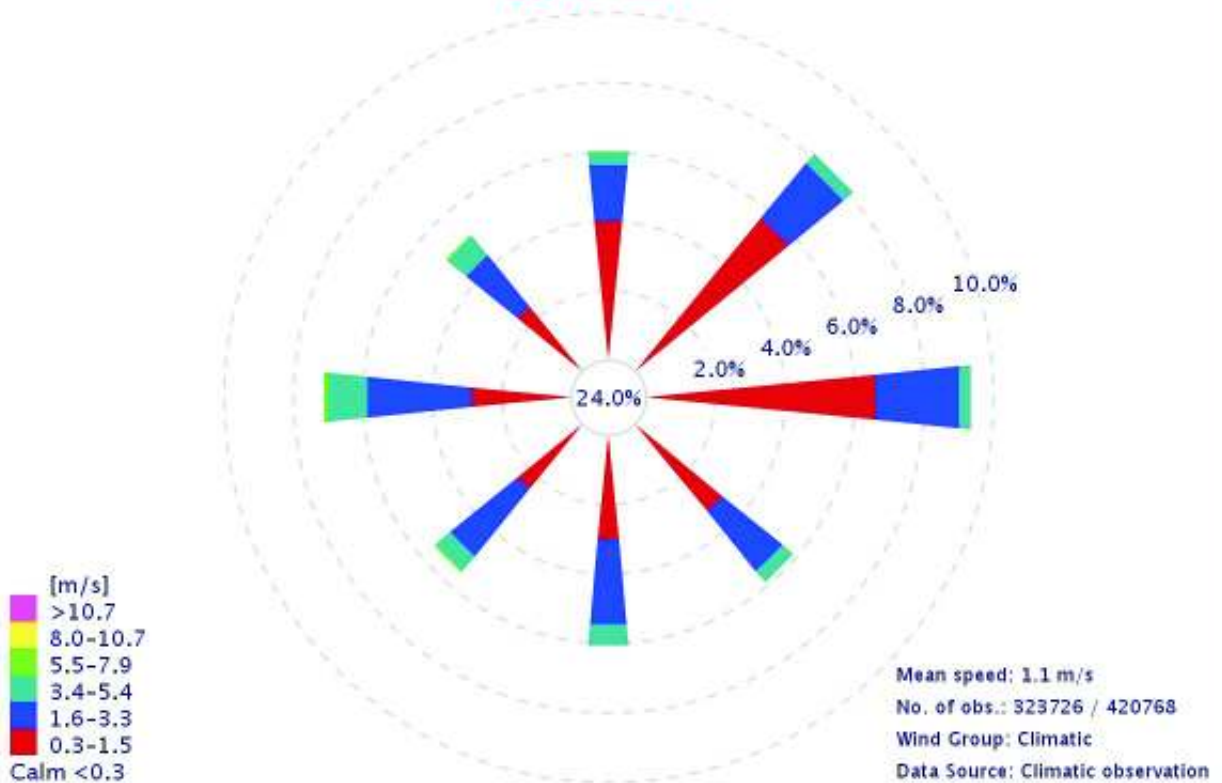
Date: 07-09-2017
 Project No: EJ 616
 Produced by: FCZ
 Revision: -

FIGURE 6.4-1

KOTA BHARU 1985 - 2016



PETALING JAYA 1969 - 2016

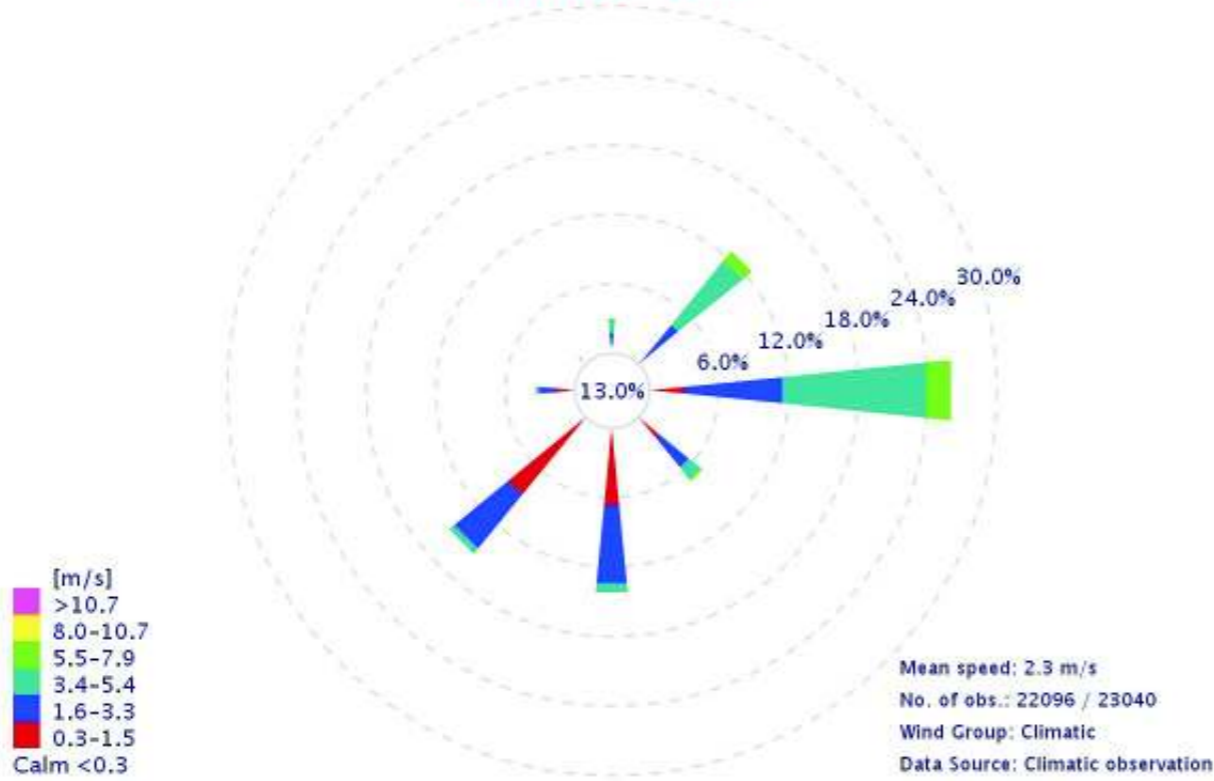


Kota Bharu and Petaling Jaya Annual Wind Rose Profile

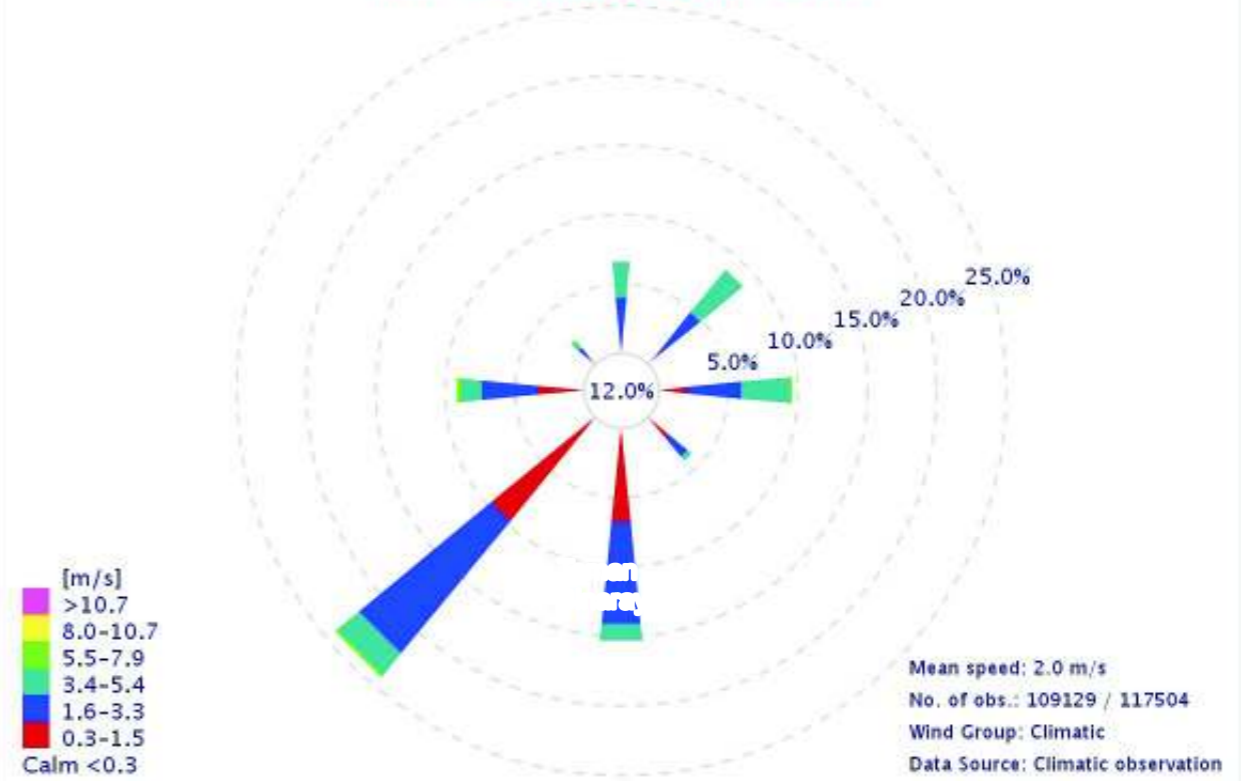
Date	07-09-2017
Project No	EJ 616
Produced by	FCZ
Revision	-

FIGURE 6.4-2

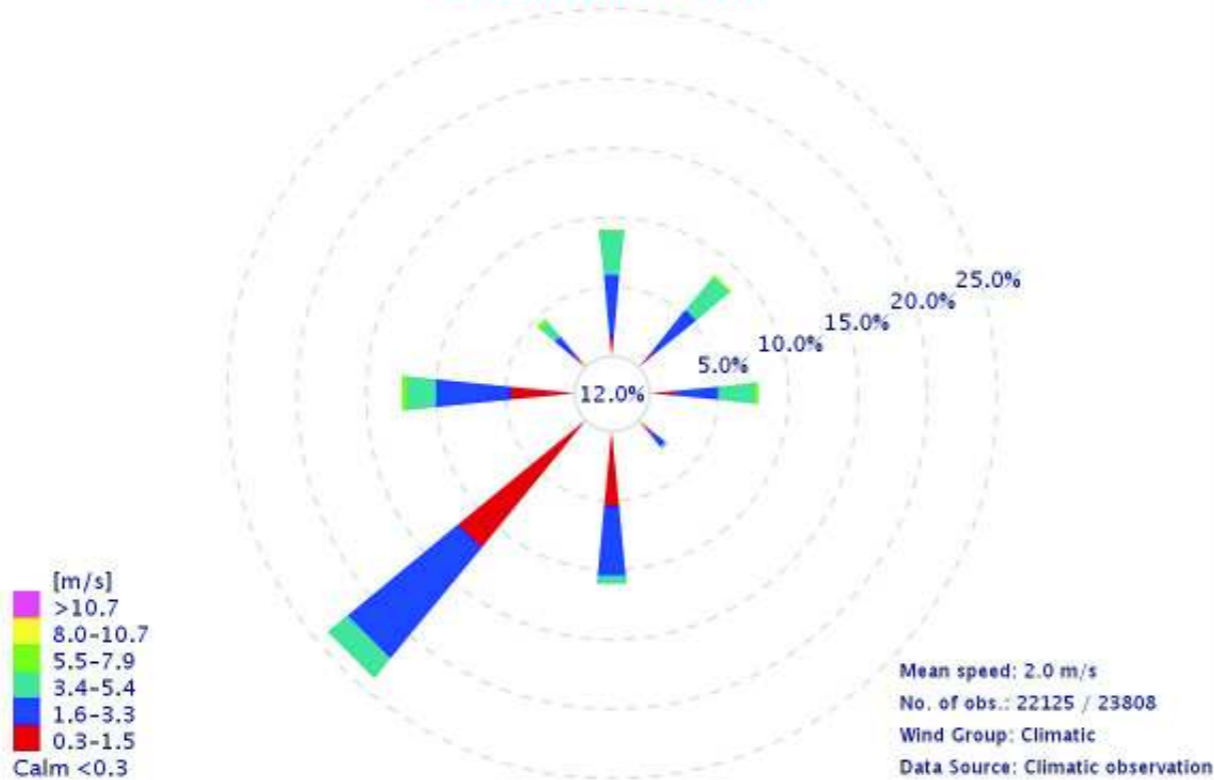
KOTA BHARU
April 1985 - 2016



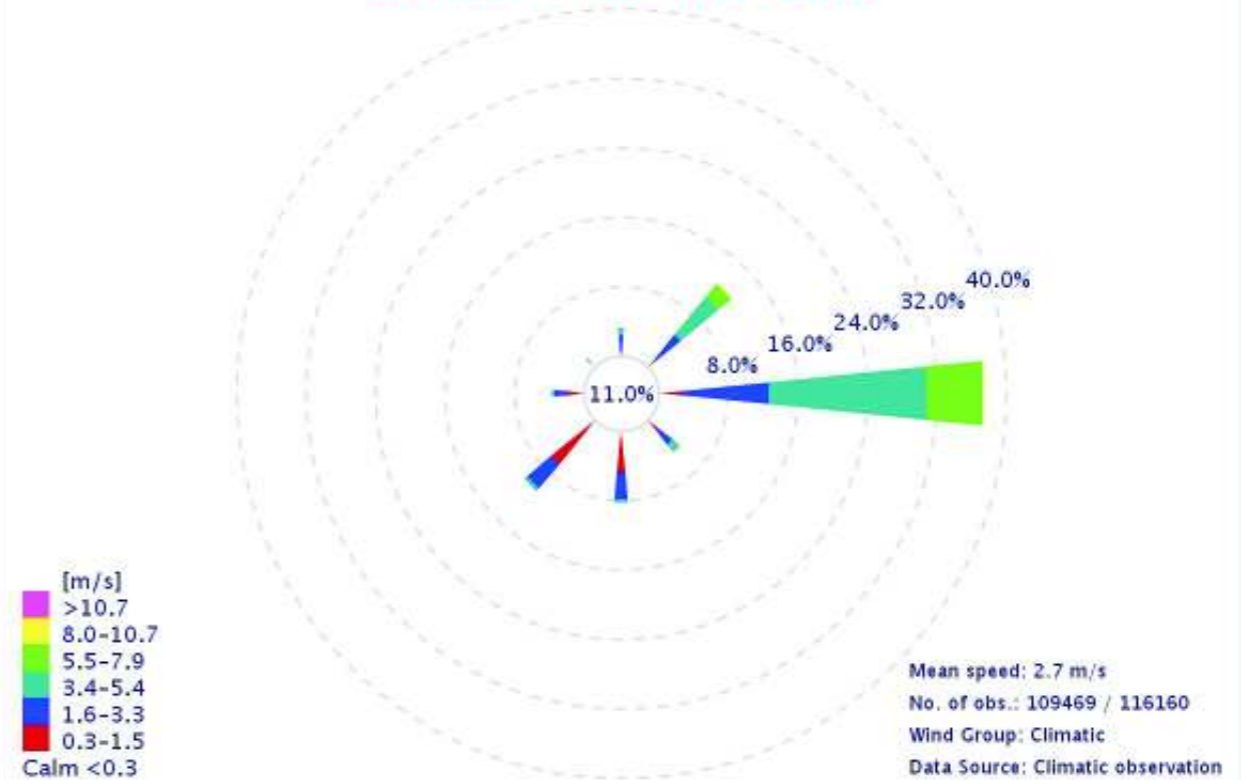
KOTA BHARU
May - September 1985 - 2016



KOTA BHARU
October 1985 - 2016



KOTA BHARU
November - March 1985 - 2016



[m/s]
>10.7
8.0-10.7
5.5-7.9
3.4-5.4
1.6-3.3
0.3-1.5
Calm <0.3

[m/s]
>10.7
8.0-10.7
5.5-7.9
3.4-5.4
1.6-3.3
0.3-1.5
Calm <0.3

[m/s]
>10.7
8.0-10.7
5.5-7.9
3.4-5.4
1.6-3.3
0.3-1.5
Calm <0.3

[m/s]
>10.7
8.0-10.7
5.5-7.9
3.4-5.4
1.6-3.3
0.3-1.5
Calm <0.3

LEGEND

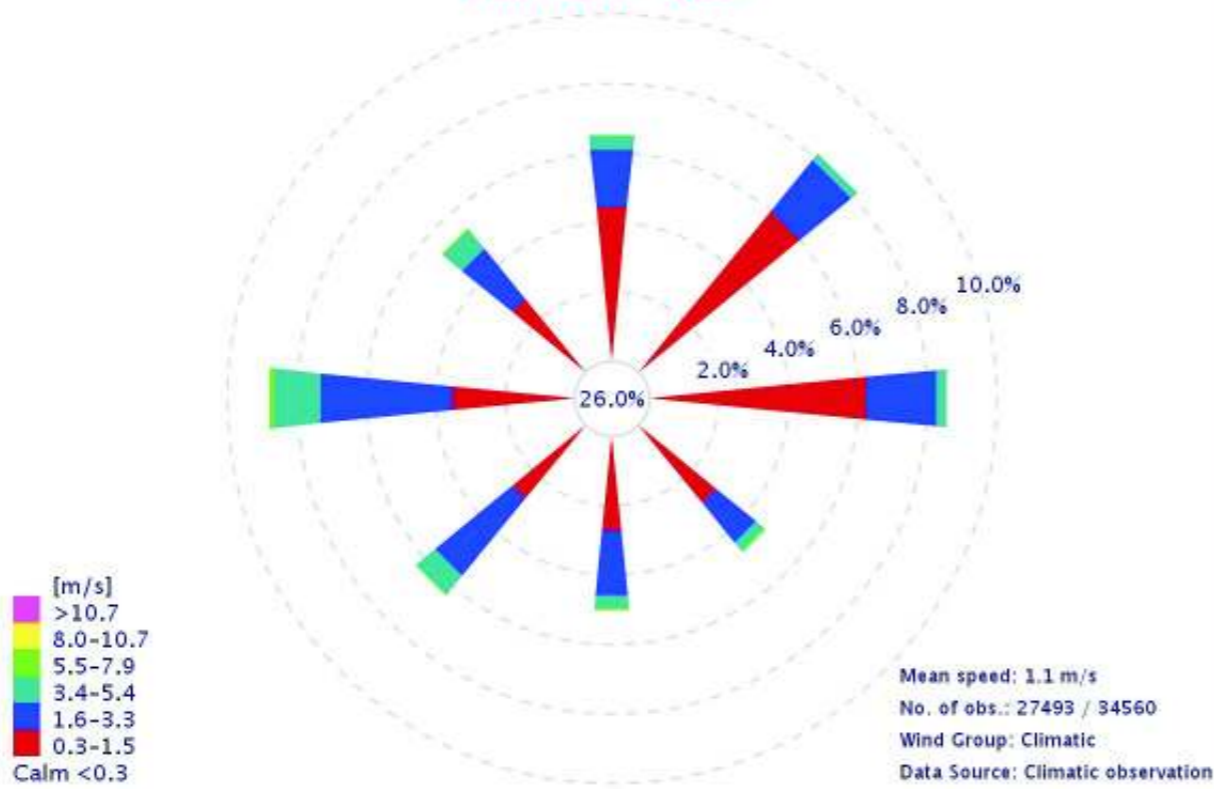


**Kota Bharu Seasonal Wind
Rose Profile (1985 - 2016)**

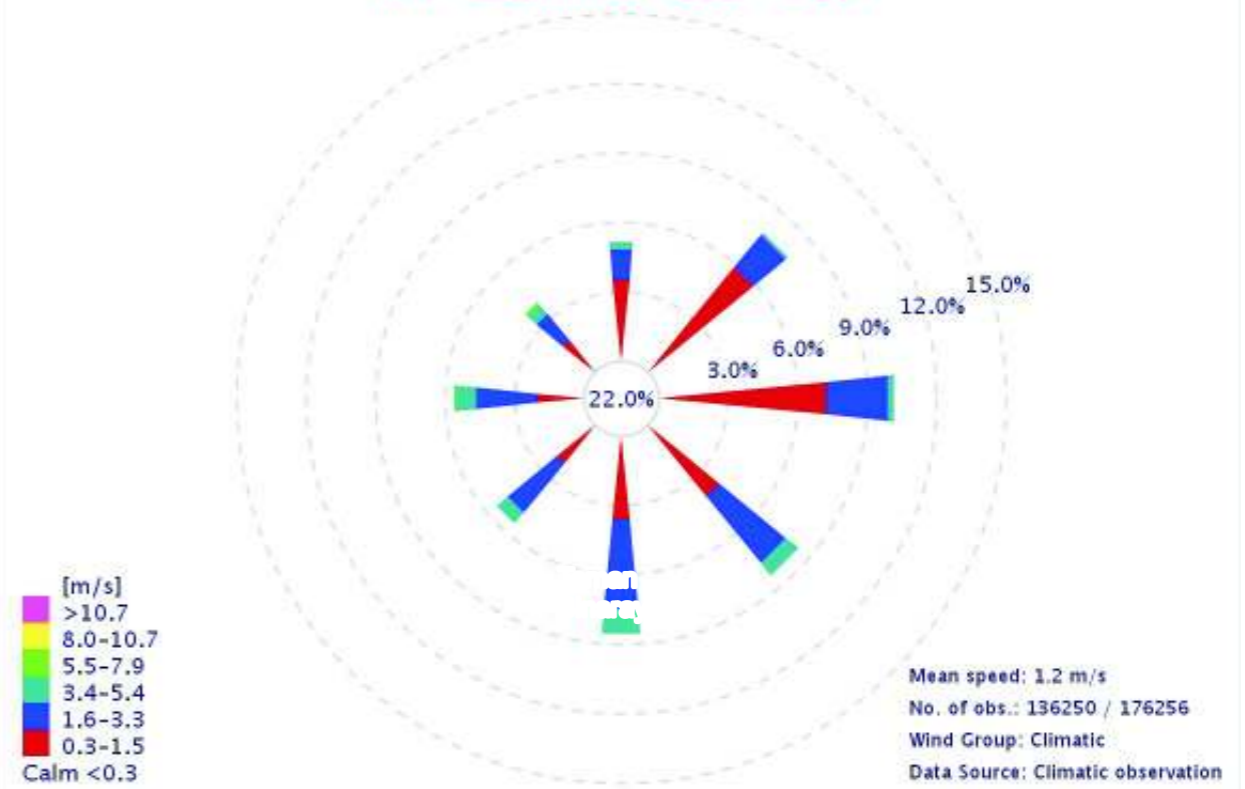
Date	07-09-2017
Project No	EJ 616
Produced by	FCZ
Revision	A

FIGURE 6.4-3

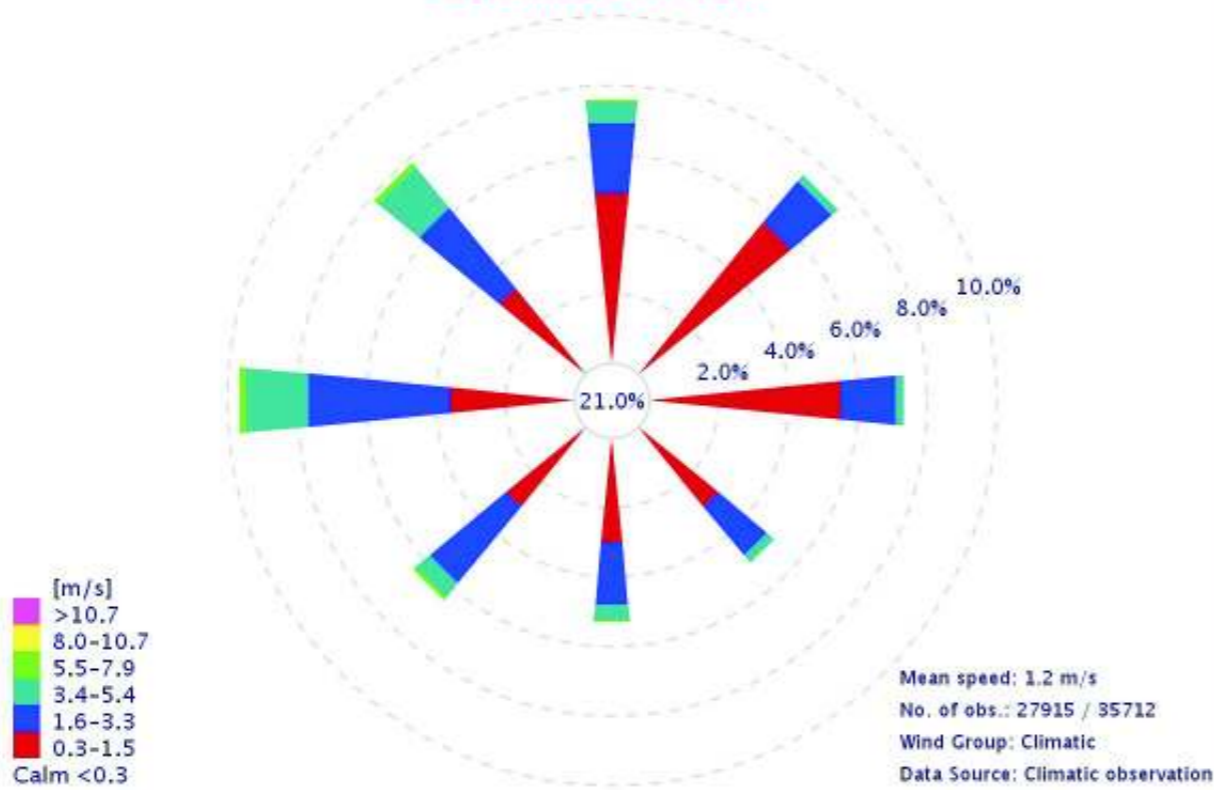
PETALING JAYA
April 1969 - 2016



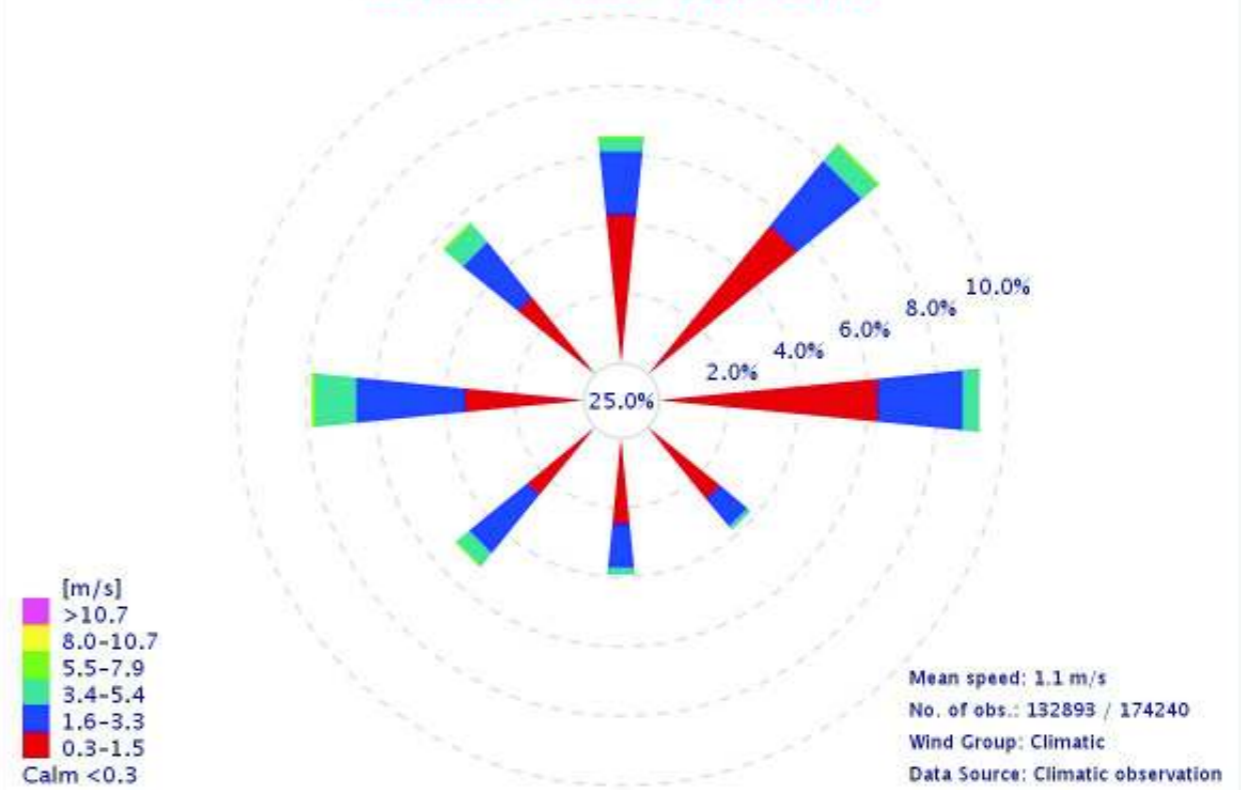
PETALING JAYA
May - September 1969 - 2016



PETALING JAYA
October 1969 - 2016



PETALING JAYA
November - March 1969 - 2016



LEGEND



**Petaling Jaya Seasonal Wind
Rose Profile (1985 - 2016)**

Date	07-09-2017
Project No	EJ 616
Produced by	FCZ
Revision	A

FIGURE 6.4-4