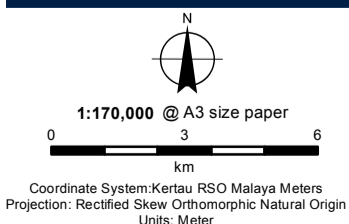
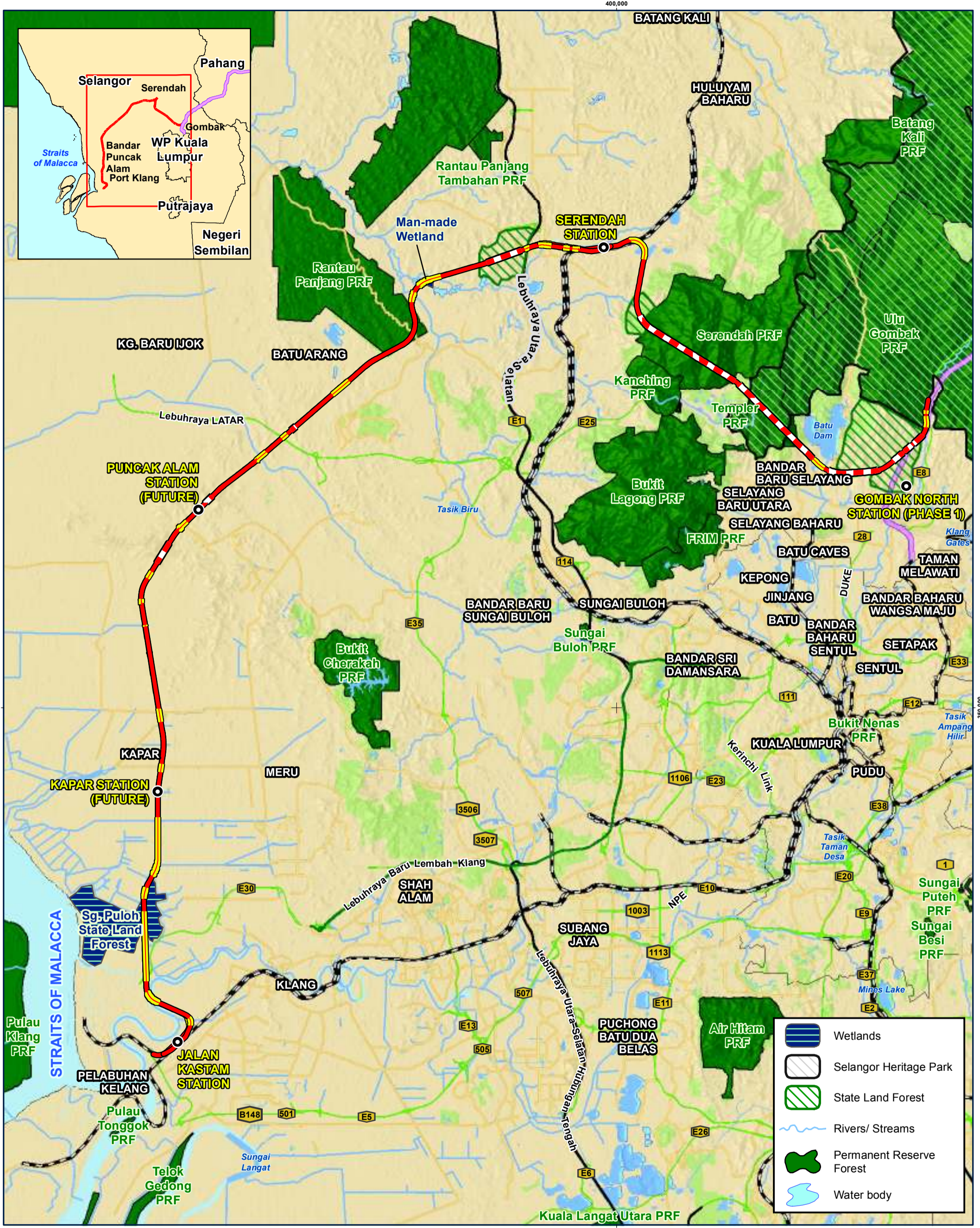


Ecological Areas Along the Alignment in Kelantan

Date	27-09-2017
Project No	EJ 616
Produced by	AFZ
Revision	A

FIGURE 6.11-1

Disclaimer: This map is produced solely for its intended purpose only. All reasonable care has been taken to ensure that the information presented here is accurate, subject to the availability and quality of data sources used. There is however no guarantee that this map is free from errors or omissions. Its use for any other purposes is therefore at the sole risk of the user. Source: ERE Consulting Group (2017), Roads and localities courtesy of OpenStreetMap (2016), Forest Reserve by JPBD (2015) G:\Project\EJ 616 The East Coast Rail Link - Phase 2)\Maps\MXD\EIA\Fig6.12-1_EcoArea_North.mxd

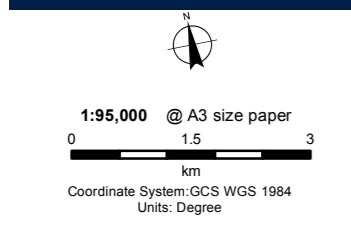
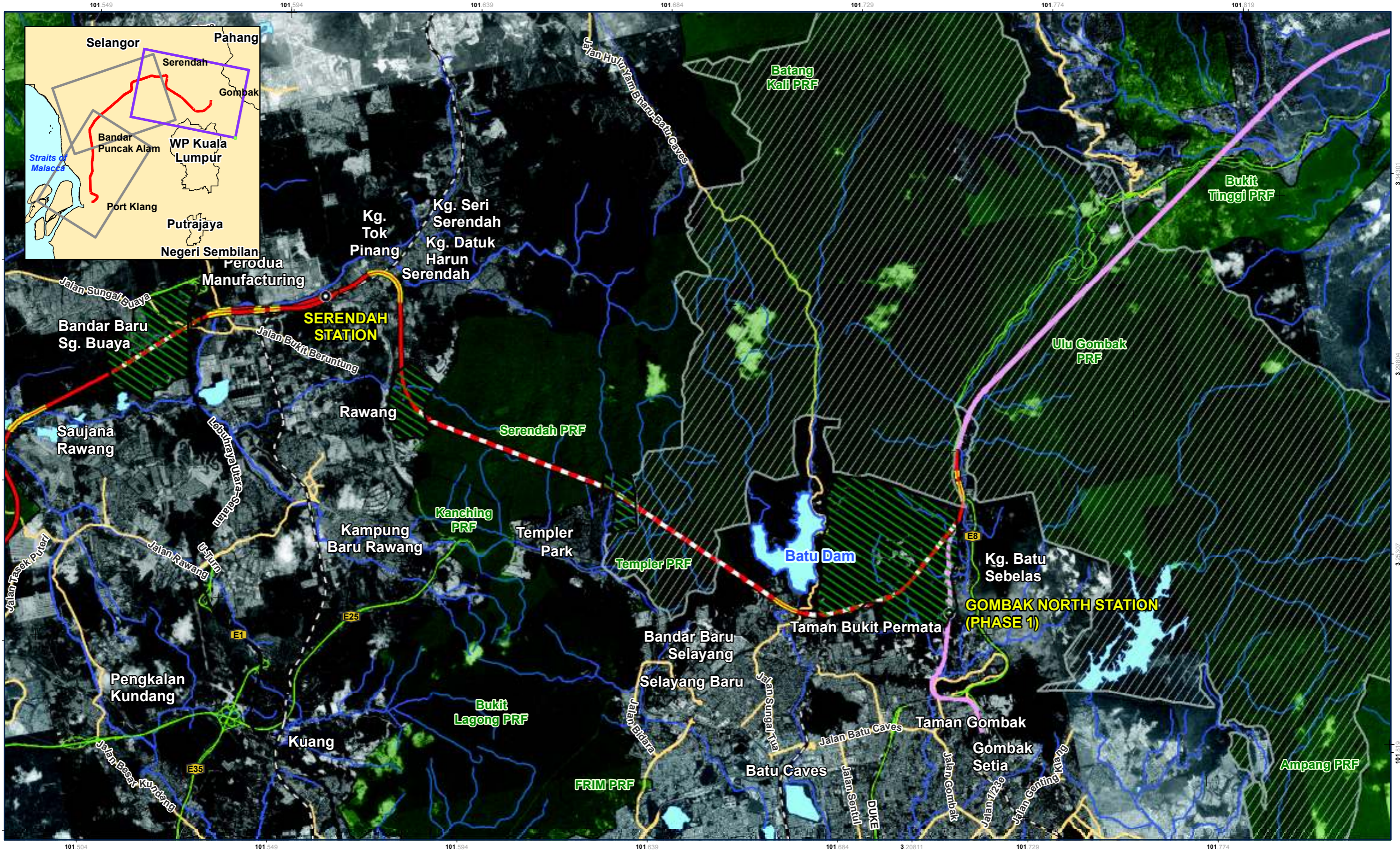


Ecological Areas Along the Proposed Alignment in Selangor

Date	16-10-2017
Project No	EJ 616
Produced by	AFZ
Revision	A

FIGURE 6.11-2

Disclaimer: This map is produced solely for its intended purpose only. All reasonable care has been taken to ensure that the information presented here is accurate, subject to the availability and quality of data sources used. There is however no guarantee that this map is free from errors or omissions. Its use for any other purposes is therefore at the sole risk of the user. Source: ERE Consulting Group (2017), Roads and localities courtesy of OpenStreetMap (2016), Forest Reserve by JPBD (2015), Selangor State Park and Surrounding Area by WWF (2014) G:\Project\EJ 616 The East Coast Rail Link - Phase (2)\Maps\MXD\EIA\Fig6.11-2_PERF_South.mxd



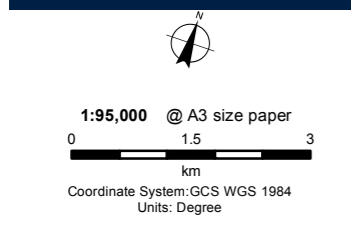
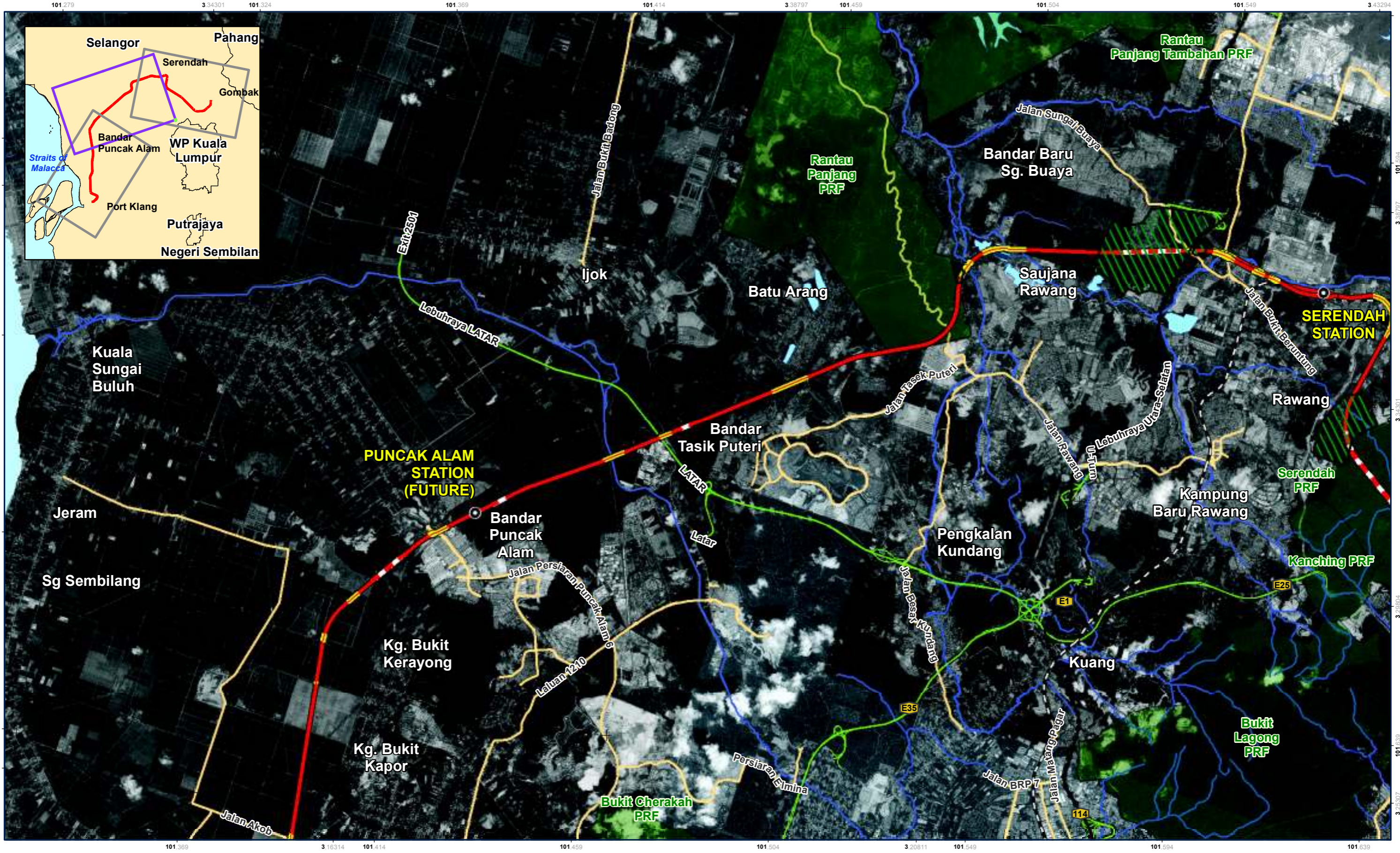
Legend

- Proposed Station
- Proposed Alignment (At-grade)
- Proposed Alignment (Elevated)
- Proposed Alignment (Tunnel)
- North-South Highway
- Existing Railway
- Highway
- Major Roads
- Water body
- Rivers/ Streams
- 2km Corridor
- Permanent Reserve Forest
- Selangor Heritage Park
- State Land Forest
- ECRL Phase 1

Ecological Areas Along the Alignment (Segment 2A) : Gombak North to Serendah

Date	28-11-2017
Project No	EJ 616
Produced by	AFZ
Revision	A

Disclaimer: This map is produced solely for its intended purpose only. All reasonable care has been taken to ensure that the information presented here is accurate, subject to the availability and quality of data sources used. There is however no guarantee that this map is free from errors or omissions. Its use for any other purposes is therefore at the sole risk of the user.
 Source: ERE Consulting Group (2017), OpenStreet Map (2017), JPBD (2017), Satellite Imagery courtesy of USGS (2016) G:\Project\EJ 616 The East Coast Rail Link - Phase (2)\Maps\WXD\EIA\Fig6.12-2a-c_EcoArea_South.mxd



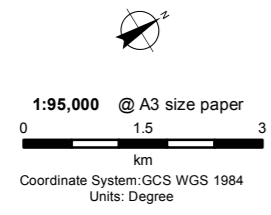
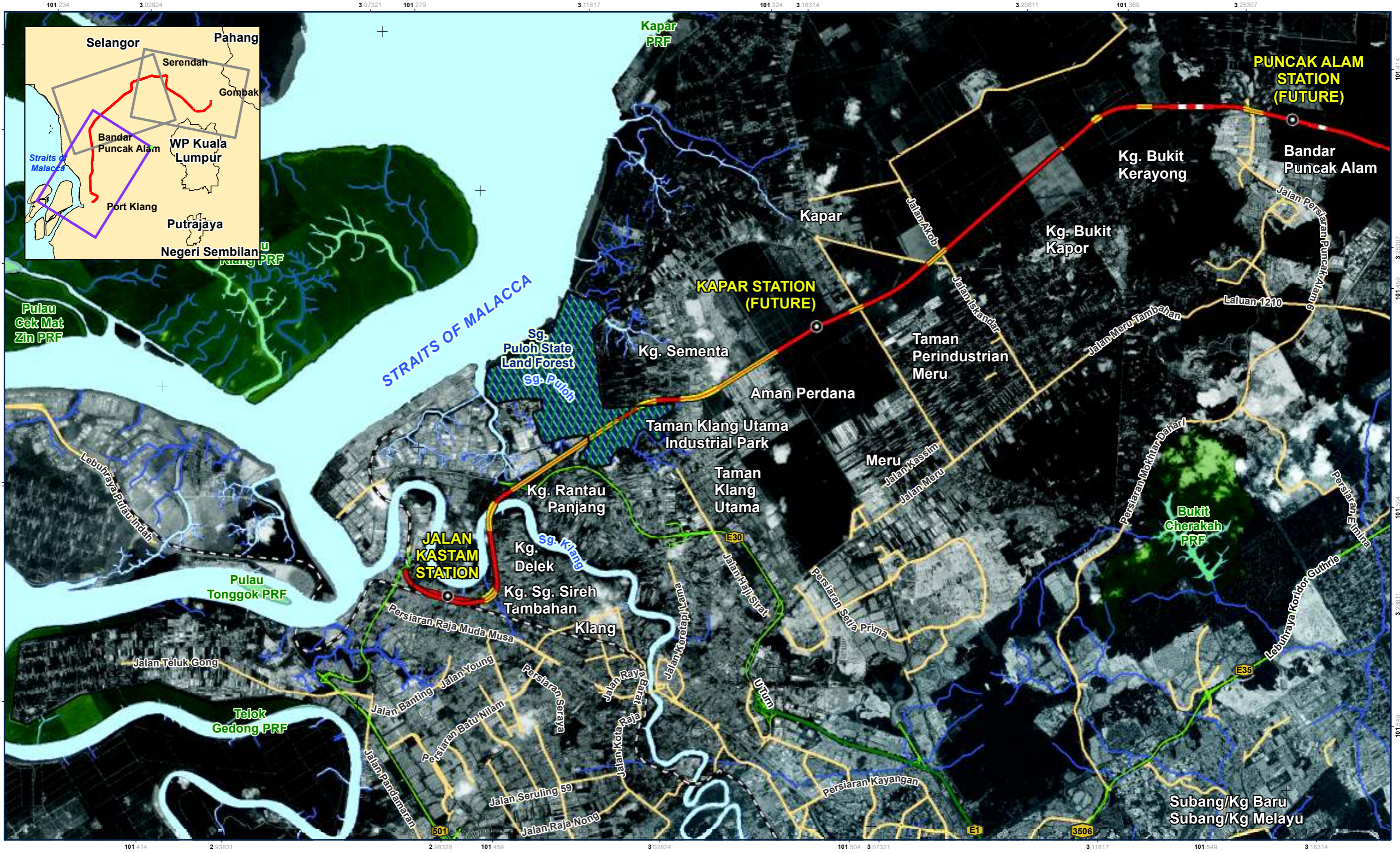
Legend	
	Proposed Station
	Proposed Alignment (At-grade)
	Proposed Alignment (Elevated)
	Proposed Alignment (Tunnel)
	North-South Highway
	Existing Railway
	Highway
	Major Roads
	Water body
	Rivers/ Streams
	2km Corridor
	Permanent Reserve Forest
	Selangor Heritage Park

Ecological Areas Along the Alignment (Segment 2B) : Serendah to Bandar Puncak Alam

Date	28-11-2017
Project No	EJ 616
Produced by	AFZ
Revision	A

FIGURE 6.11-2b

Disclaimer: This map is produced solely for its intended purpose only. All reasonable care has been taken to ensure that the information presented here is accurate, subject to the availability and quality of data sources used. There is however no guarantee that this map is free from errors or omissions. Its use for any other purposes is therefore at the sole risk of the user.
 Source: ERE Consulting Group (2017), OpenStreet Map (2017), JPBD (2017), Satellite Imagery courtesy of USGS (2016) G:\Project\EJ 616 The East Coast Rail Link - Phase (2)\Maps\WXD\EIA\Fig6.12-2a-c_EcoArea_South.mxd

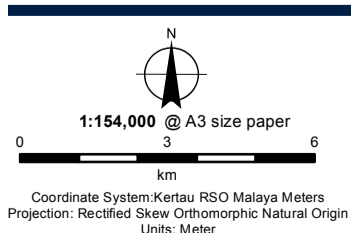
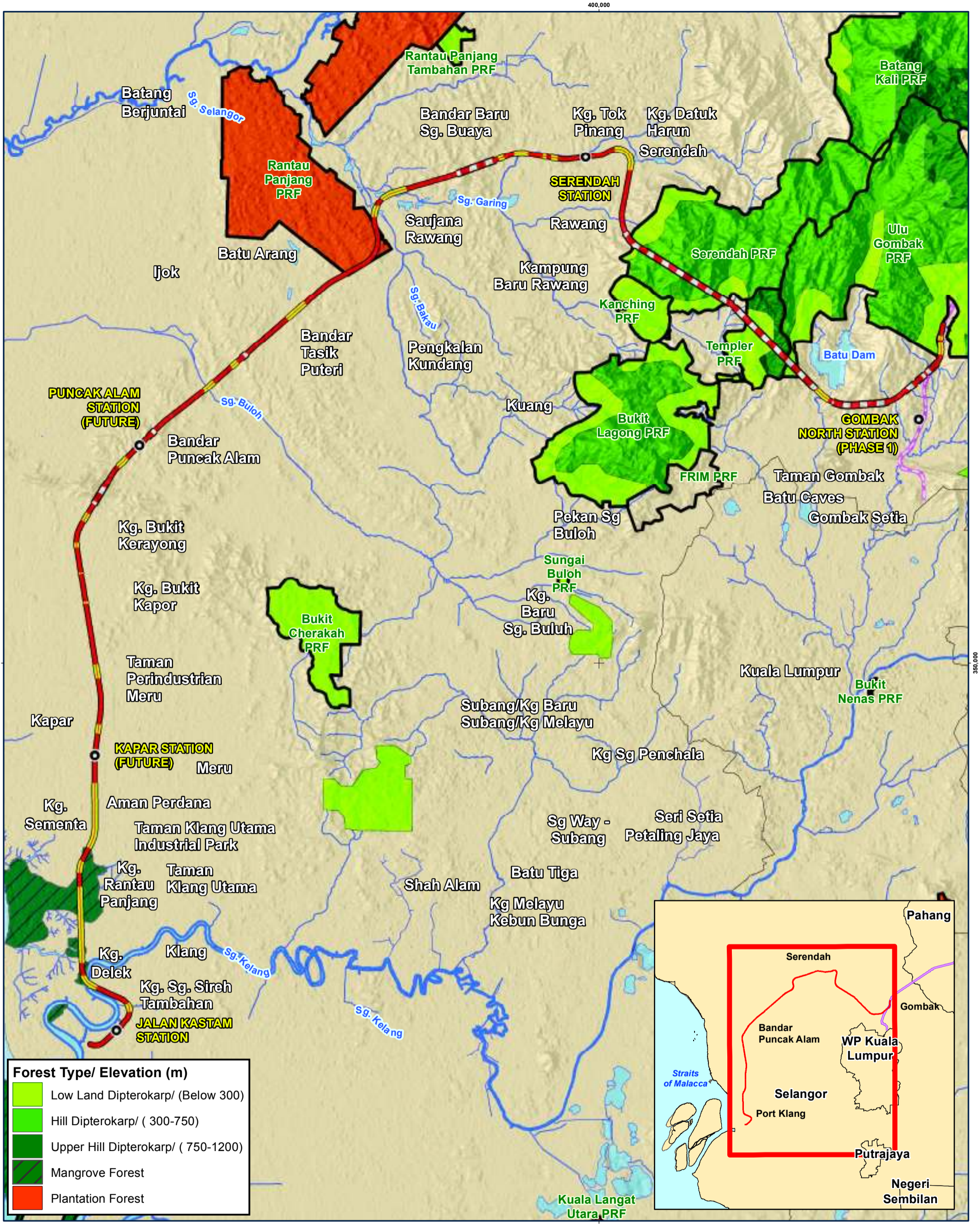


Legend			
● Proposed Station	— North-South Highway	Water body	Wetlands
— Proposed Alignment (At-grade)	— Existing Railway	— Rivers/ Streams	
— Proposed Alignment (Elevated)	— Highway	●●●● 2km Corridor	
— Proposed Alignment (Tunnel)	— Major Roads	Permanent Reserve Forest	

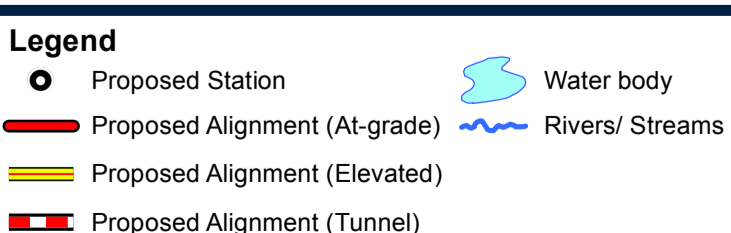
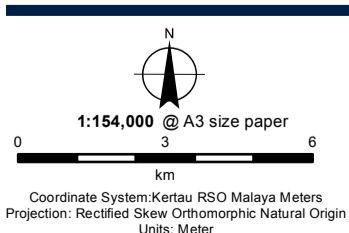
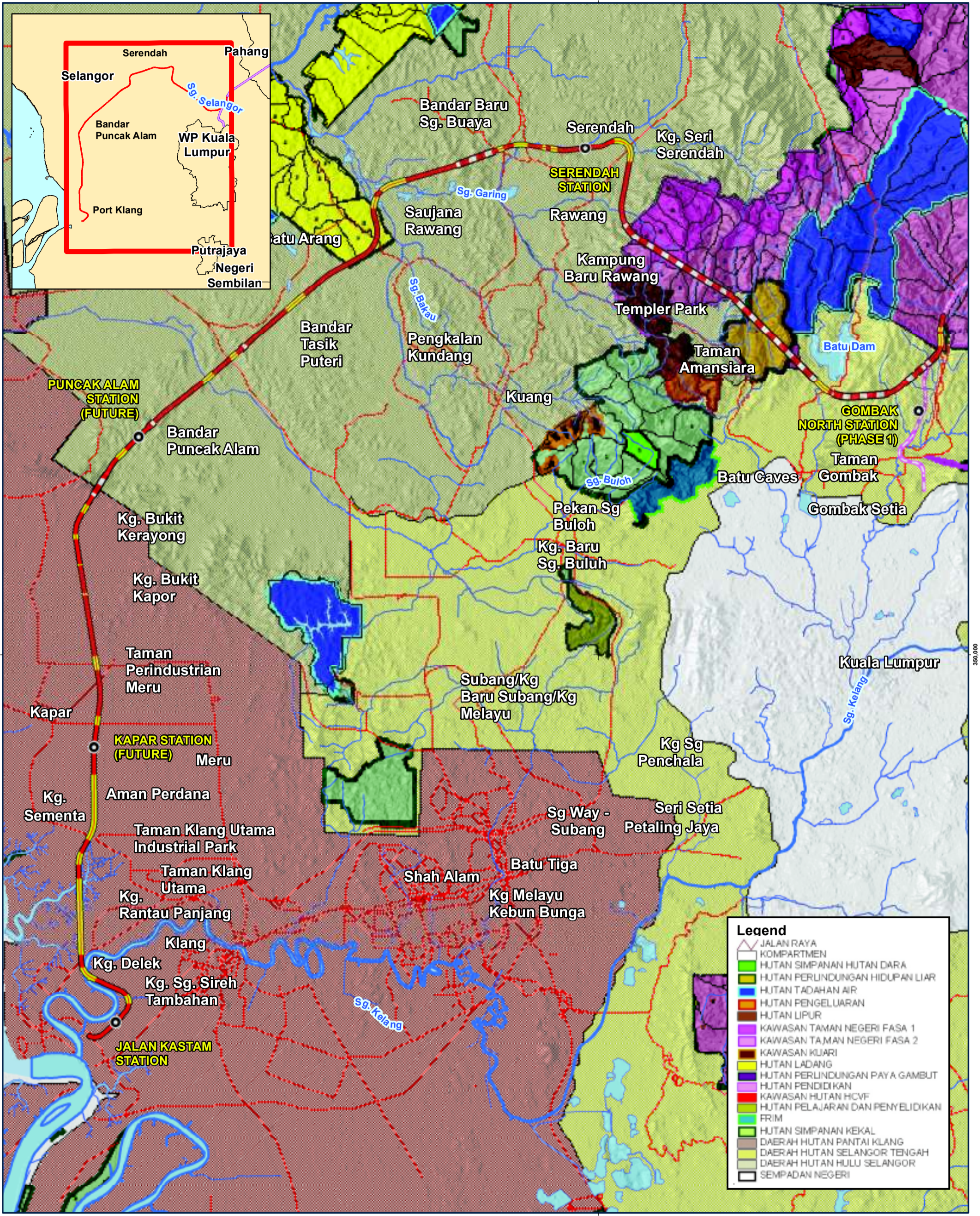
Ecological Areas Along the Alignment (Segment 2C) : Bandar Puncak Alam to Port Klang

Date	28-11-2017
Project No	EJ 616
Produced by	AFZ
Revision	A

Disclaimer: This map is produced solely for its intended purpose only. All reasonable care has been taken to ensure that the information presented here is accurate, subject to the availability and quality of data sources used. There is however no guarantee that this map is free from errors or omissions. Its use for any other purposes is therefore at the sole risk of the user.
 Source: ERE Consulting Group (2017), OpenStreet Map (2017), JPBD (2017), Satellite Imagery courtesy of USGS (2016) G:\Project\EJ 616 The East Coast Rail Link - Phase (2)\Maps\WXD\EIA\Fig.12-2a-c_EcoArea_South.mxd



Disclaimer: This map is produced solely for its intended purpose only. All reasonable care has been taken to ensure that the information presented here is accurate, subject to the availability and quality of data sources used. There is however no guarantee that this map is free from errors or omissions. Its use for any other purposes is therefore at the sole risk of the user.
Source: ERE Consulting Group (2016), Roads and localities courtesy of OpenStreetMap (2016), Department of Irrigation and Drainage (2016) G:\Project\EJ 616 The East Coast Rail Link - Phase 2\Maps\MXD\EIA\Fig6.12-4_TypeofPRF_South.mxd

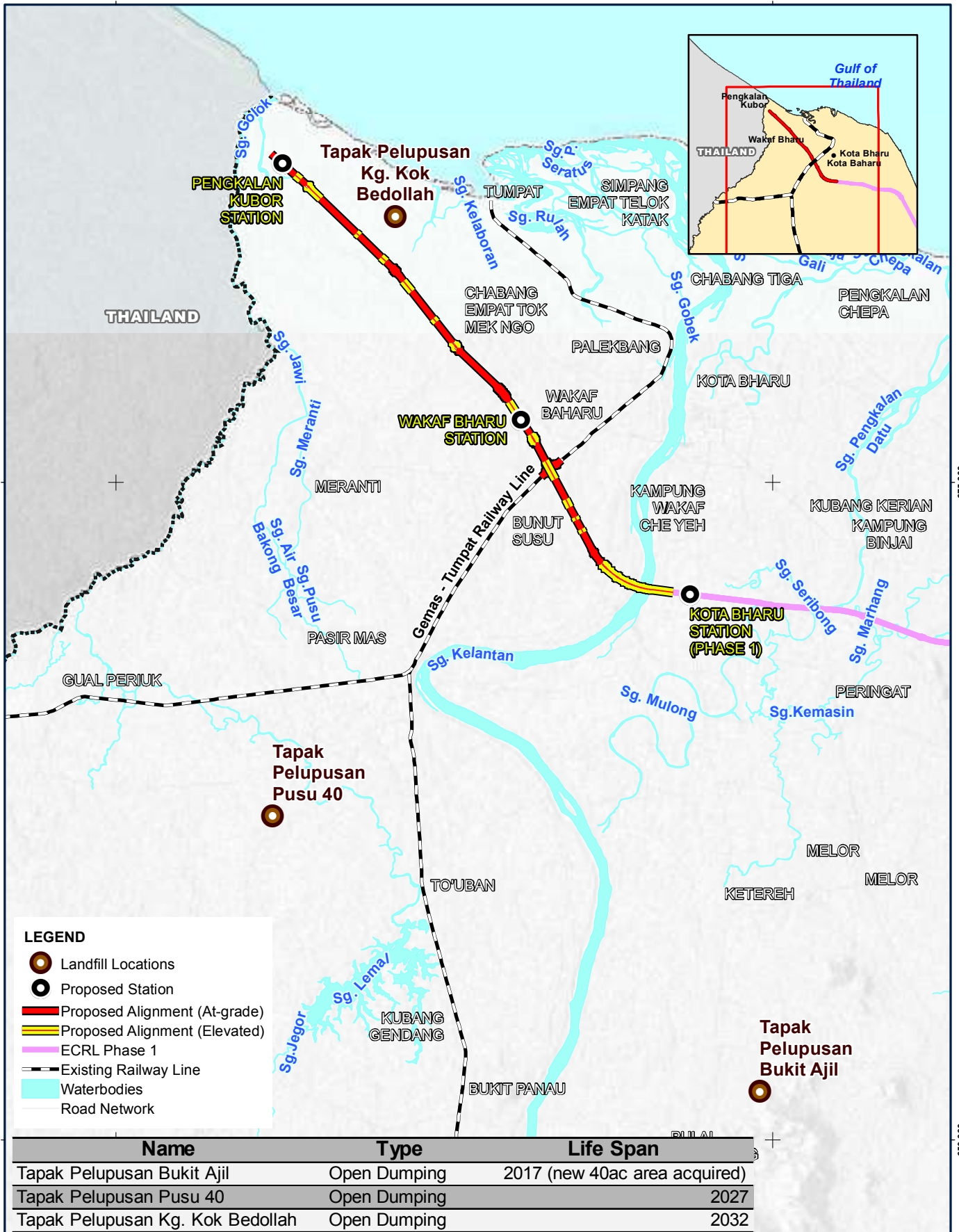


Selangor Forest Resource Plan

Date	28-09-2017
Project No	EJ 616
Produced by	AFZ
Revision	A

FIGURE 6.11-5

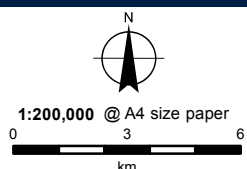
Disclaimer: This map is produced solely for its intended purpose only. All reasonable care has been taken to ensure that the information presented here is accurate, subject to the availability and quality of data sources used. There is however no guarantee that this map is free from errors or omissions. Its use for any other purposes is therefore at the sole risk of the user.
Source: ERE Consulting Group (2016), Roads and localities courtesy of OpenStreetMap (2016), Department of Irrigation and Drainage (2016) G:\Project\EJ 616 The East Coast Rail Link - Phase 2)\Maps\MXD\EIA\Fig6.12-5_ForestResourcePlan_South.mxd



LEGEND

- Landfill Locations
- Proposed Station
- Proposed Alignment (At-grade)
- Proposed Alignment (Elevated)
- ECRL Phase 1
- Existing Railway Line
- Waterbodies
- Road Network

Name	Type	Life Span
Tapak Pelupusan Bukit Ajil	Open Dumping	2017 (new 40ac area acquired)
Tapak Pelupusan Pusu 40	Open Dumping	2027
Tapak Pelupusan Kg. Kok Bedollah	Open Dumping	2032



Coordinate System:Kertau RSO Malaya Meters
 Projection: Rectified Skew Orthomorphic Natural Origin
 Units: Meter

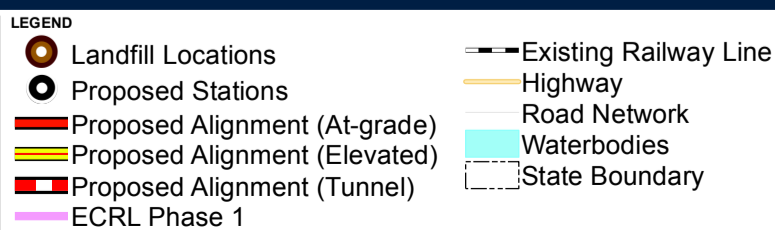
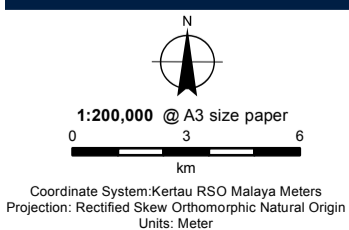
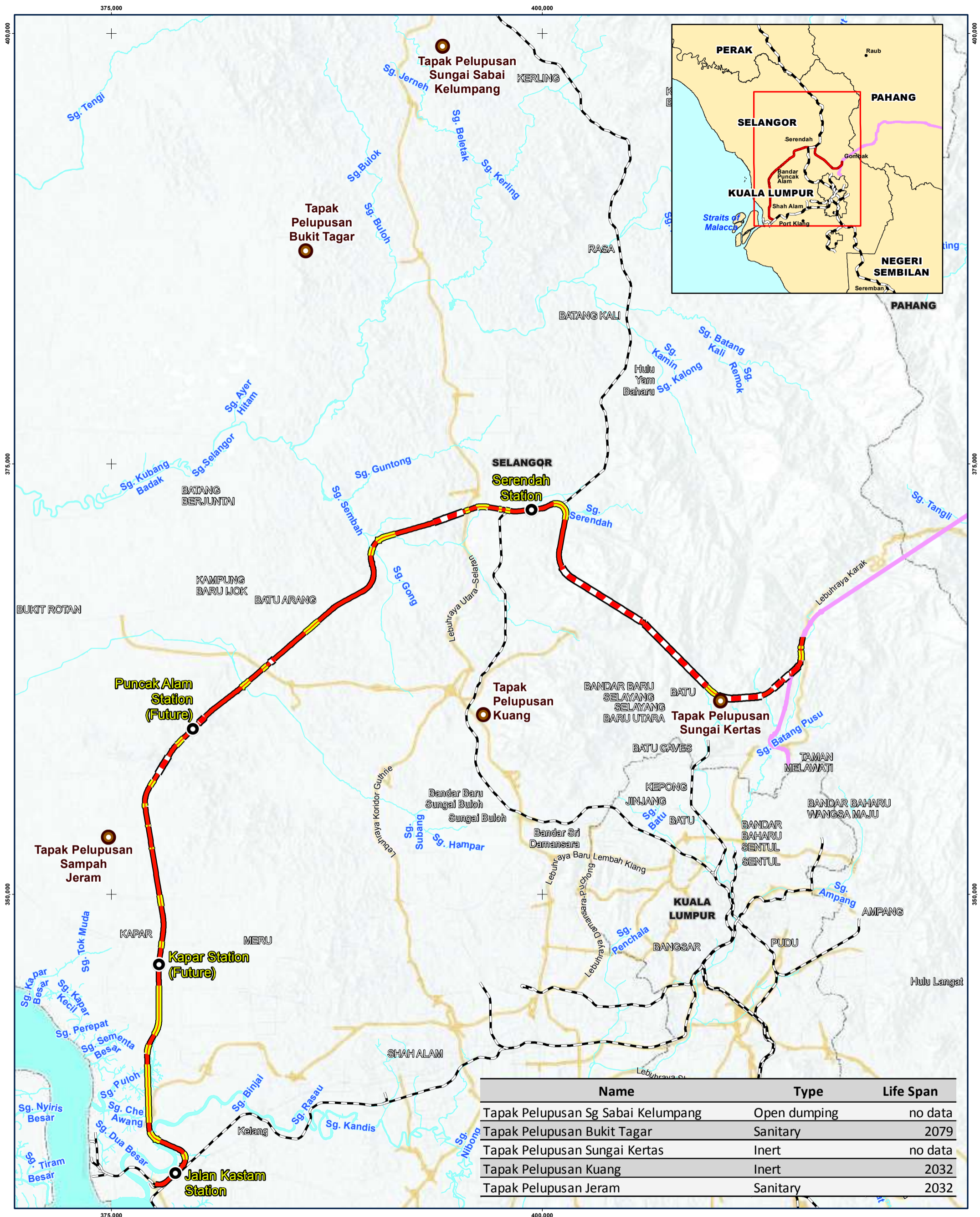


Location of Existing Landfills (Kelantan)

Date: 02-10-2017
 Project No: EJ 616
 Produced by: ZAB
 Revision: A

FIGURE 6.14-1

Disclaimer: This map is produced solely for its intended purpose only. All reasonable care has been taken to ensure that the information presented here is accurate, subject to the availability and quality of data sources used. There is however no guarantee that this map is free from errors or omissions. Its use for any other purposes is therefore at the sole risk of the user.
 Source: SW Corp Malaysia (2017). E:\Project\EJ 616 ECRL Phase 2\Maps\MXD\EJ 616 Fig. 7-1 Landfill LocationKEL.mxd



Location of Existing Landfills (Selangor)

Date: 02-10-2017
 Project No: EJ 616
 Produced by: ZAB
 Revision: A

FIGURE 6.14-2