


1:35,000 @ A3 size paper  
0 0.5 1  
km

Coordinate System: Kertau RSO Malaya Meters  
Projection: Rectified Skew Orthomorphic Natural Origin  
Units: Meter

**LEGEND**

- Water Quality monitoring Location
- Borehole Location
- Noise and Vibration Monitoring Location
- Air Quality Sampling Location
- Proposed Stations
- Proposed Alignment (At-grade)
- Proposed Alignment (Elevated)
- ECRL Phase 1
- Existing Railway Line
- Major Road
- Waterbodies
- State Boundary



**Baseline Sampling Stations in Kelantan**

Date	06-03-2018
Project No	EJ 616
Produced by	ZAB
Revision	A

**FIGURE 6.7-1a**

Disclaimer: This map is produced solely for its intended purpose only. All reasonable care has been taken to ensure that the information presented here is accurate, subject to the availability and quality of data sources used. There is however no guarantee that this map is free from errors or omissions. Its use for any other purposes is therefore at the sole risk of the user.  
Source: ERE Consulting Group (2015). E:\Project\EJ 616 ECRL Phase 2\Maps\WXD\EJ 616 Baseline Sampling (North).mxd





Coordinate System: Kertau RSO Malaya Meters  
Projection: Rectified Skew Orthomorphic Natural Origin  
Units: Meter

**LEGEND**

- Water Quality monitoring Location
- Borehole Location
- Noise and Vibration Monitoring Location
- Air Quality Sampling Location
- Proposed Stations
- Proposed Alignment (At-grade)
- Proposed Alignment (Elevated)
- Existing Railway Line
- Major Road
- Waterbodies
- State Boundary

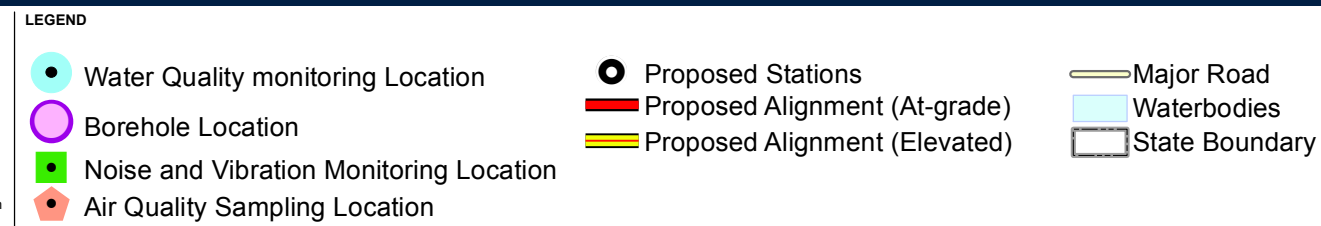
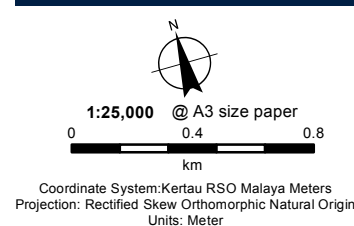
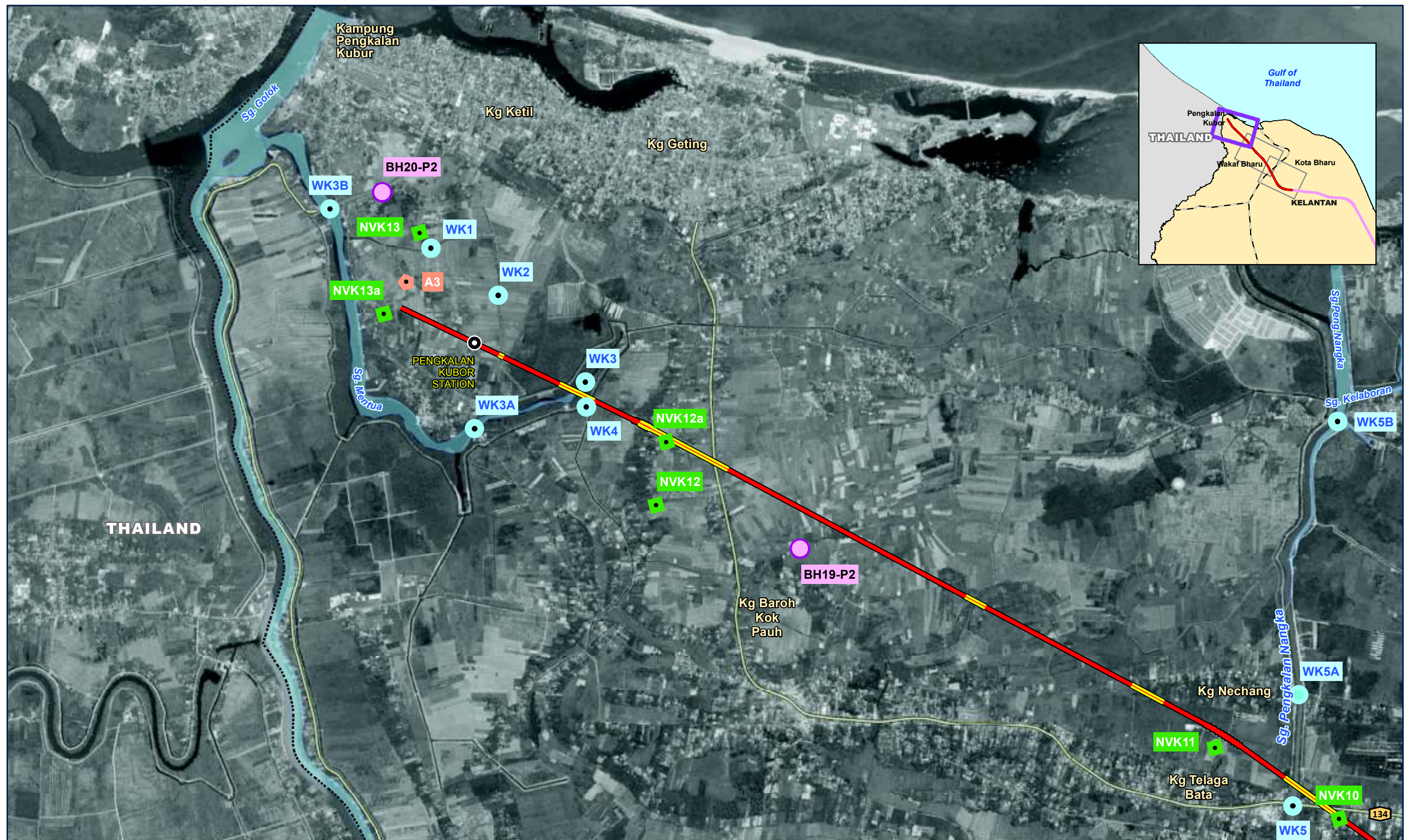
**Baseline Sampling Stations in Kelantan**

Date	06-03-2018
Project No	EJ 616
Produced by	ZAB
Revision	A

**FIGURE 6.7-1b**

Disclaimer: This map is produced solely for its intended purpose only. All reasonable care has been taken to ensure that the information presented here is accurate, subject to the availability and quality of data sources used. There is however no guarantee that this map is free from errors or omissions. Its use for any other purposes is therefore at the sole risk of the user.  
Source: ERE Consulting Group (2015). E:\Project\EJ 616 ECRL Phase 2\Maps\WXD\EJ 616 Baseline Sampling (North).mxd



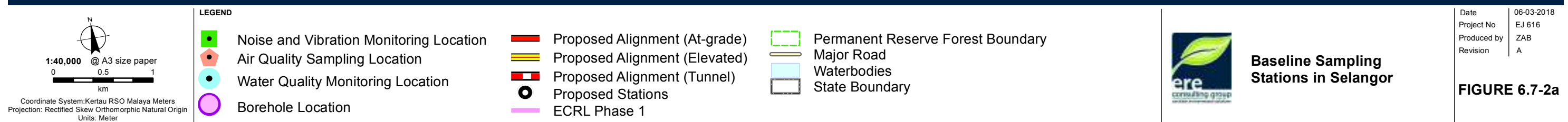
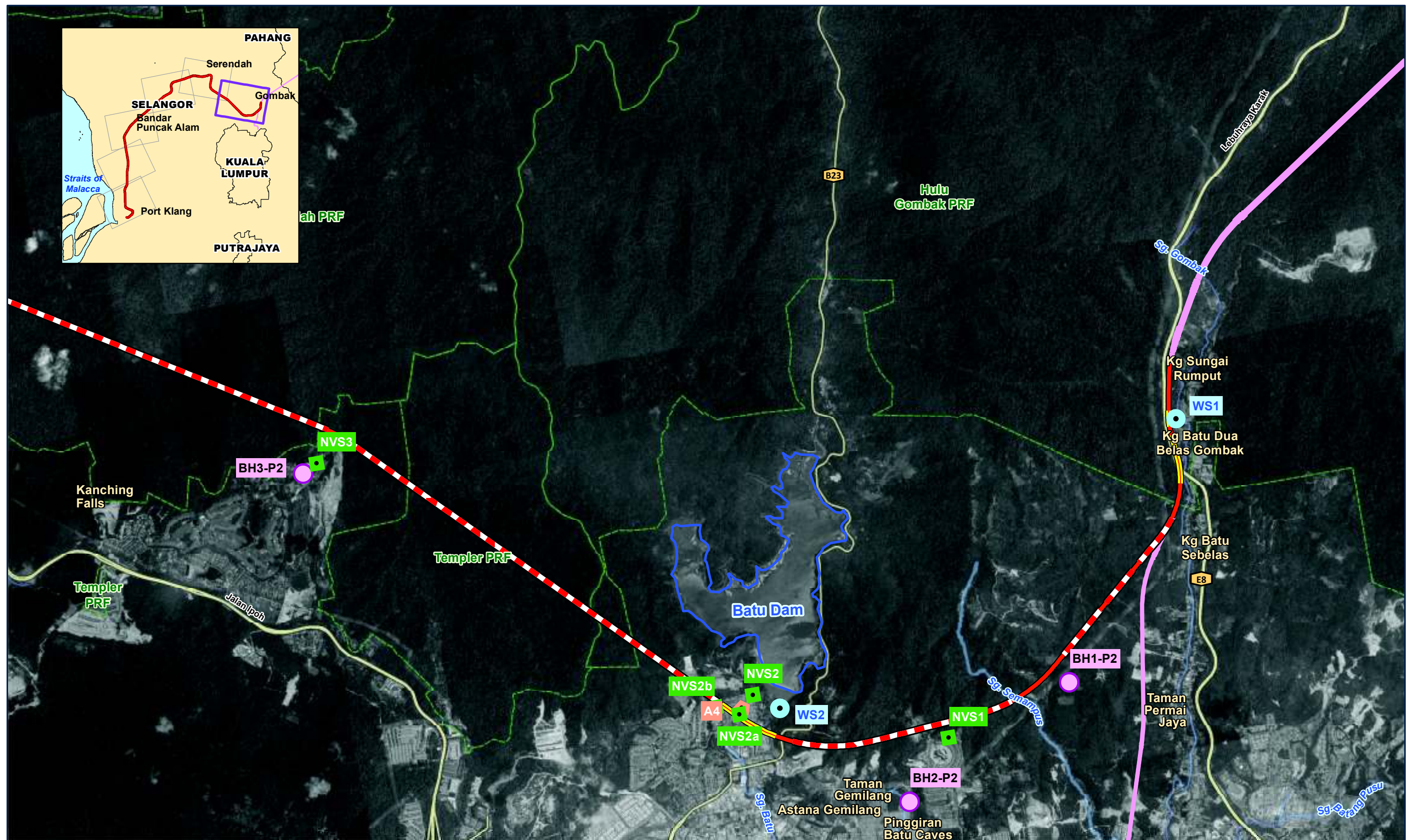


## Baseline Sampling Stations in Kelantan

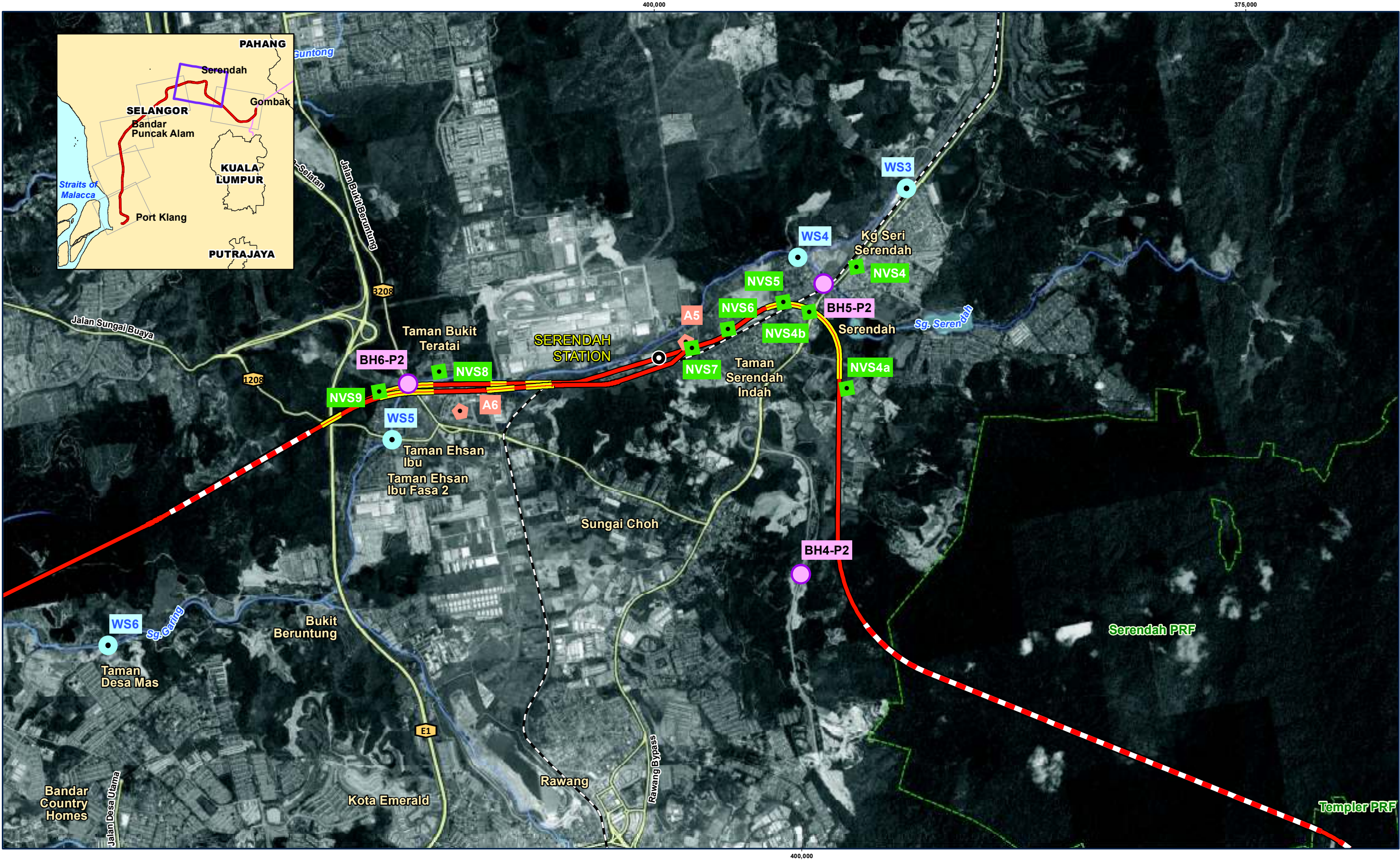
Date	06-03-2018
Project No	EJ 616
Produced by	ZAB
Revision	A

**FIGURE 6.7-1c**









1:40,000 @ A3 size paper

0 0.5 1 km

Coordinate System: Kertau RSO Malaya Meters  
Projection: Rectified Skew Orthomorphic Natural Origin  
Units: Meter

**LEGEND**

Noise and Vibration Monitoring Location

Air Quality Sampling Location

Water Quality Monitoring Location

Borehole Location

Proposed Alignment (At-grade)

Proposed Alignment (Elevated)

Proposed Alignment (Tunnel)

Proposed Stations

Permanent Reserve Forest Boundary

Existing Railway Line

Major Road

Waterbodies

State Boundary

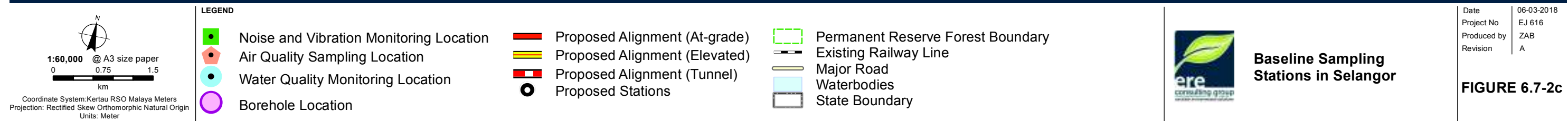
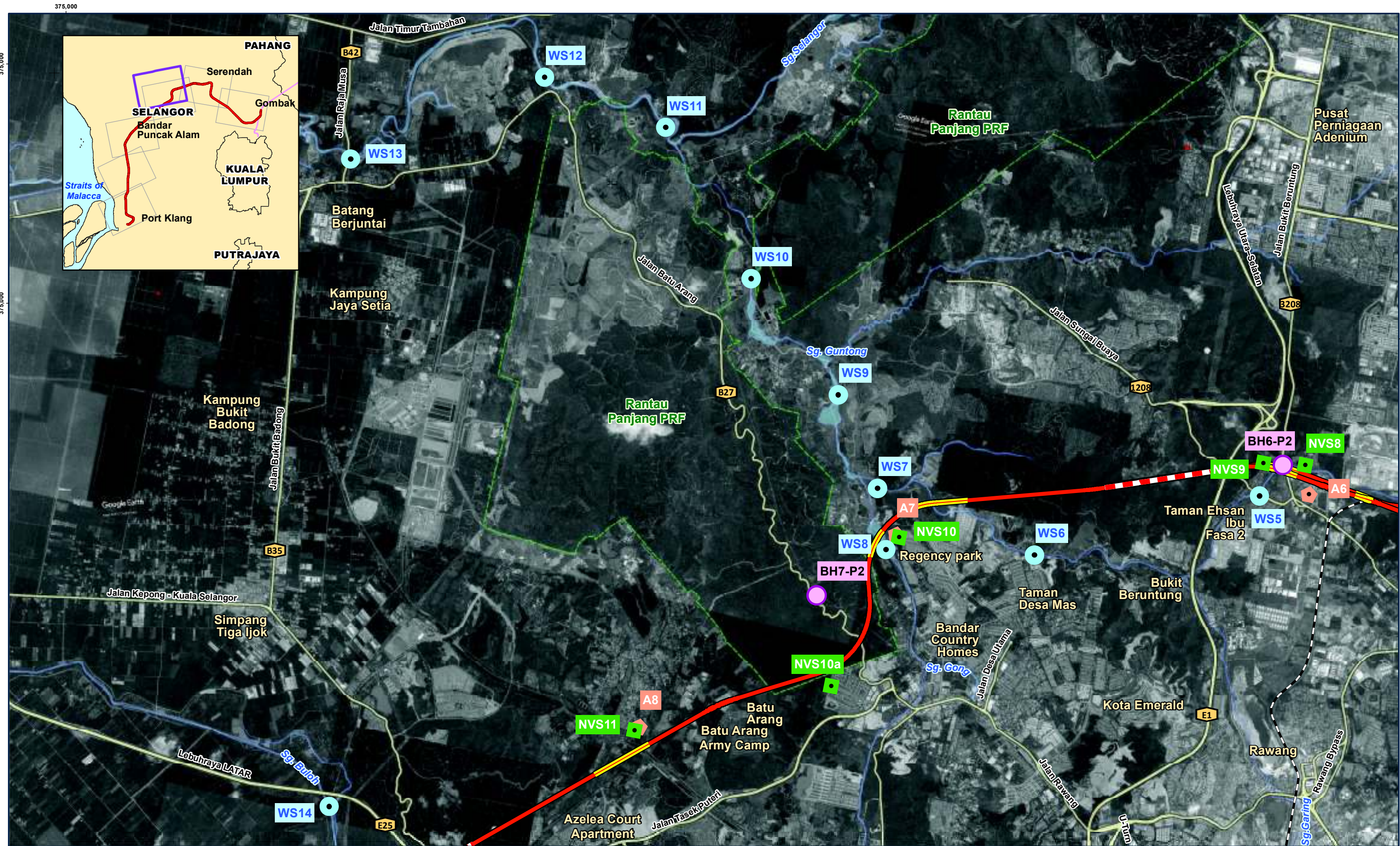
**Baseline Sampling Stations in Selangor**

Date	06-03-2018
Project No	EJ 616
Produced by	ZAB
Revision	A

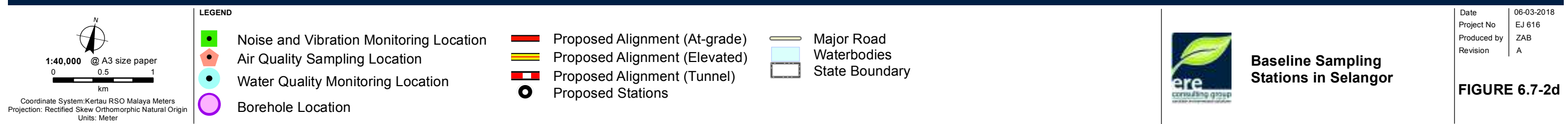
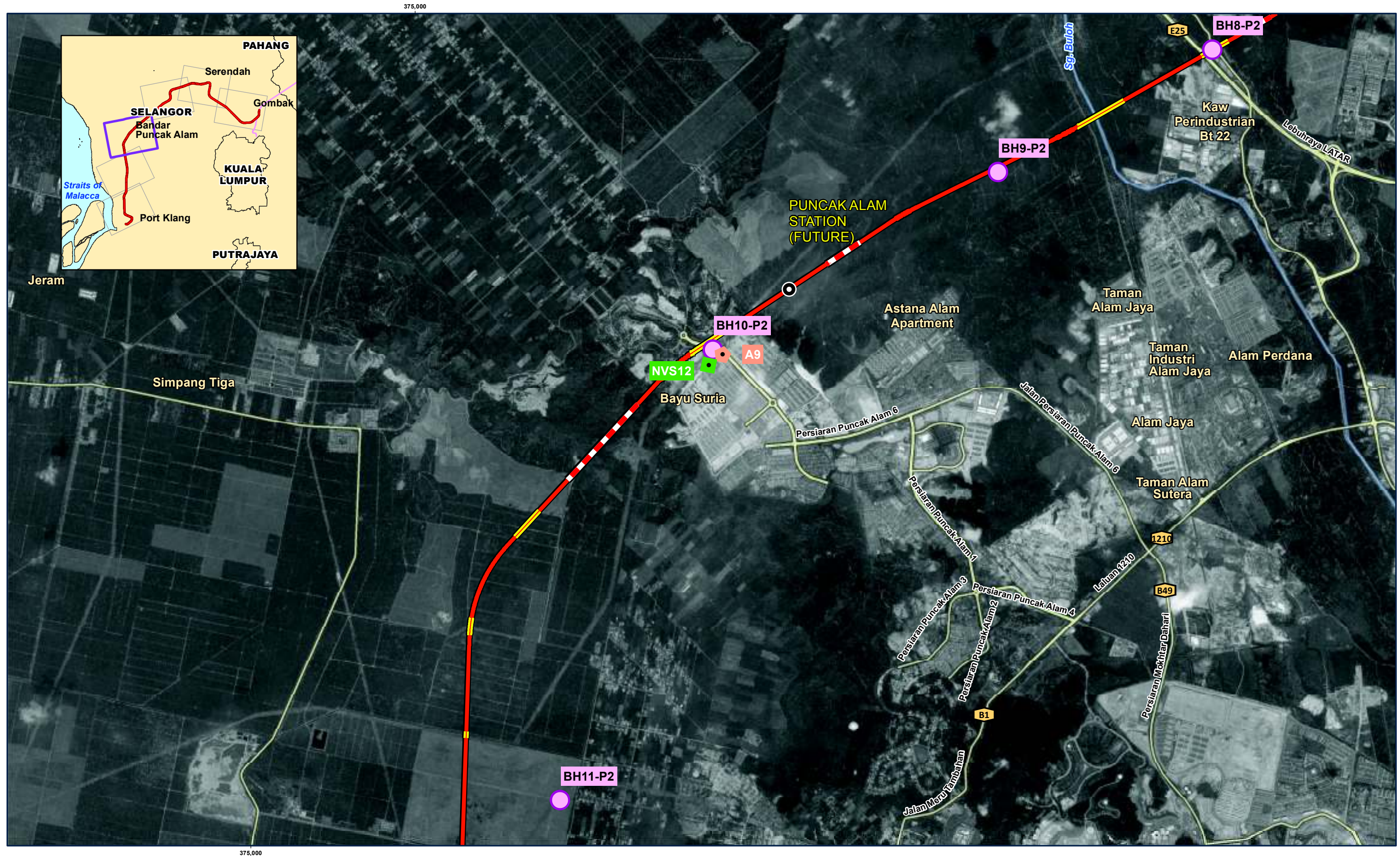
**FIGURE 6.7-2b**

Disclaimer: This map is produced solely for its intended purpose only. All reasonable care has been taken to ensure that the information presented here is accurate, subject to the availability and quality of data sources used. There is however no guarantee that this map is free from errors or omissions. Its use for any other purposes is therefore at the sole risk of the user.  
Source: ERE Consulting Group (2015). E:\Project\EJ 616 ECRL Phase 2\Maps\WXD\EJ 616 Baseline Sampling (South)\_v2.mxd










Disclaimer: This map is produced solely for its intended purpose only. All reasonable care has been taken to ensure that the information presented here is accurate, subject to the availability and quality of data sources used. There is however no guarantee that this map is free from errors or omissions. Its use for any other purposes is therefore at the sole risk of the user.

Source: ERE Consulting Group (2015). E:\Project\EJ 616 ECRL Phase 2\Maps\WXD\EJ 616 Baseline Sampling (South)\_v2.mxd



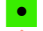















1:40,000 @ A3 size paper  
0 0.5 1  
km

Coordinate System: Kartau RSO Malaya Meters  
Projection: Rectified Skew Orthomorphic Natural Origin  
Units: Meter

**LEGEND**

	Noise and Vibration Monitoring Location		Proposed Alignment (At-grade)		Major Road
	Air Quality Sampling Location		Proposed Alignment (Elevated)		Waterbodies
	Water Quality Monitoring Location		Proposed Alignment (Tunnel)		State Boundary
	Borehole Location		Proposed Stations		

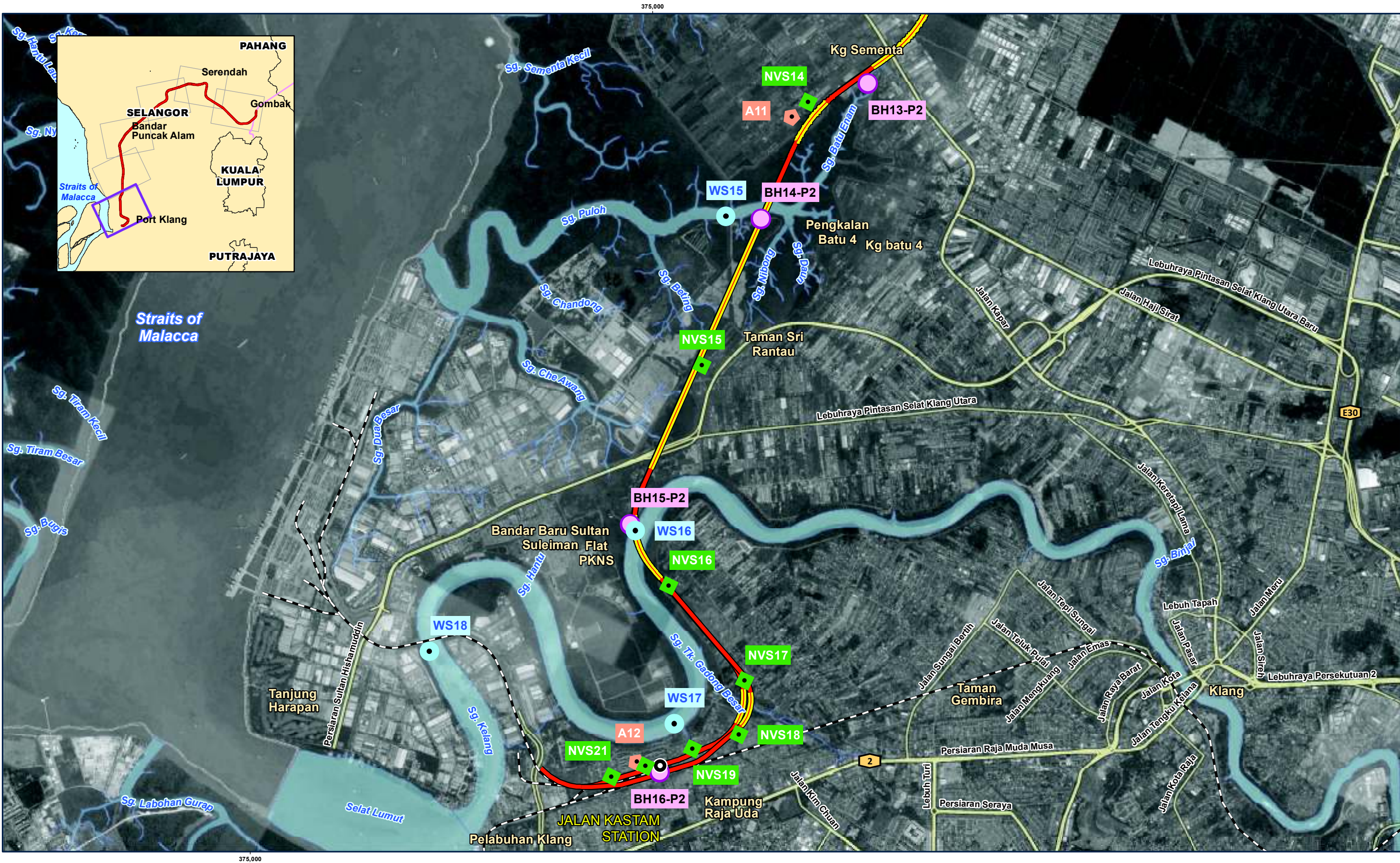


**Baseline Sampling  
Stations in Selangor**

Date	06-03-2018
Project No	EJ 616
Produced by	ZAB
Revision	A

**FIGURE 6.7-2e**





1:40,000 @ A3 size paper

0 0.5 1 km

Coordinate System: Kertau RSO Malaya Meters  
Projection: Rectified Skew Orthomorphic Natural Origin  
Units: Meter

**LEGEND**

■

 Noise and Vibration Monitoring Location

●

 Air Quality Sampling Location

●

 Water Quality Monitoring Location

●

 Borehole Location

—

 Proposed Alignment (At-grade)

—

 Proposed Alignment (Elevated)

—

 Proposed Alignment (Tunnel)

○

 Proposed Stations

—

 Existing Railway Line

—

 Major Road

—

 Waterbodies

—

 State Boundary

**Baseline Sampling Stations in Selangor**

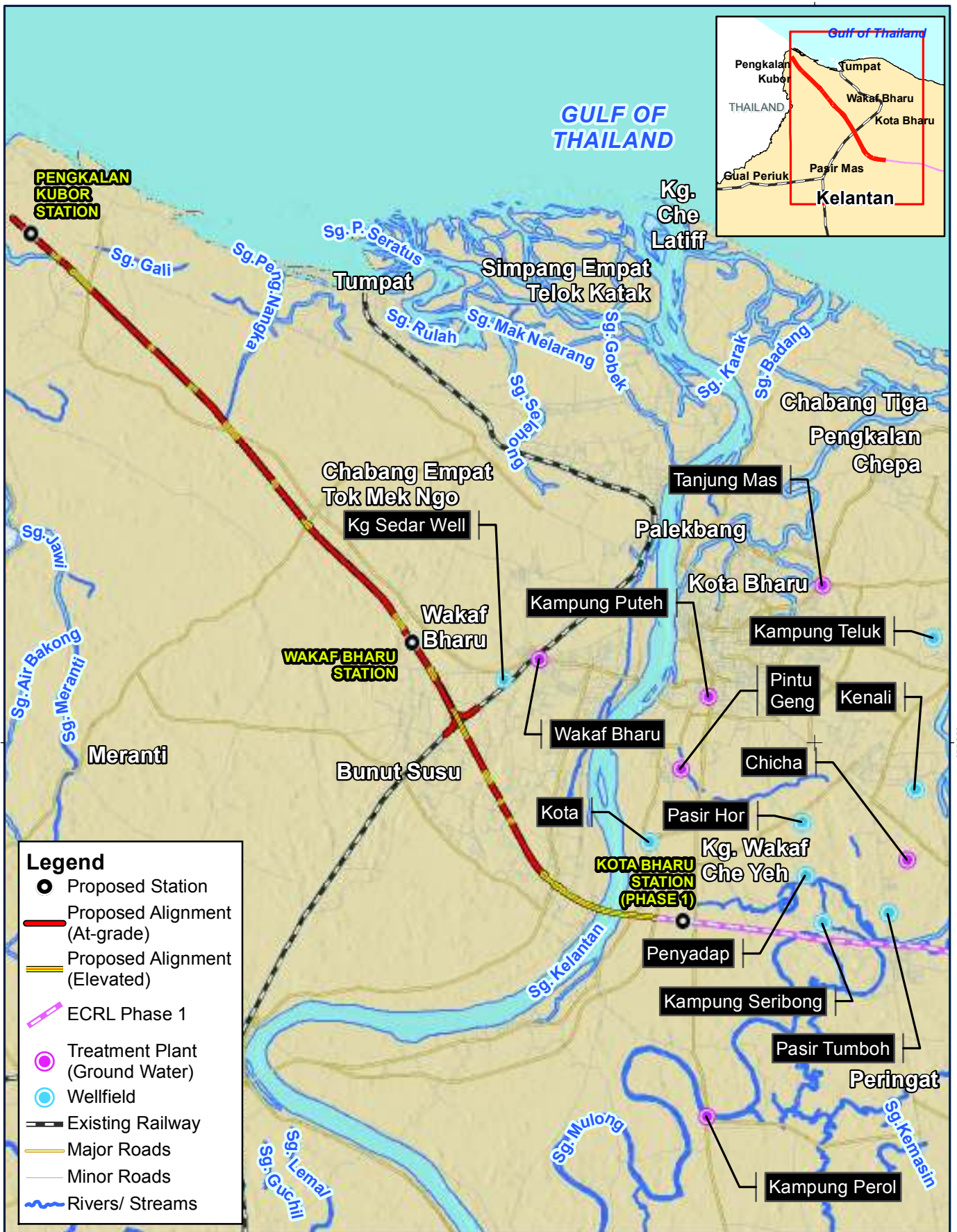
Date	06-03-2018
Project No	EJ 616
Produced by	ZAB
Revision	A

**FIGURE 6.7-2f**

Disclaimer: This map is produced solely for its intended purpose only. All reasonable care has been taken to ensure that the information presented here is accurate, subject to the availability and quality of data sources used. There is however no guarantee that this map is free from errors or omissions. Its use for any other purposes is therefore at the sole risk of the user.  
Source: ERE Consulting Group (2015). E:\Project\EJ 616 ECRL Phase 2\Maps\WXD\EJ 616 Baseline Sampling (South)\_v2.mxd



475,000



675,000

475,000



1:125,000 @ A4 size paper  
0 2 4  
km

Coordinate System: Kertau RSO Malaya Meters  
Projection: Rectified Skew Orthomorphic Natural Origin  
Units: Meter



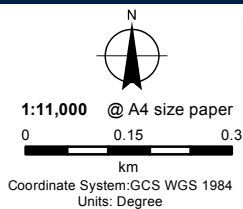
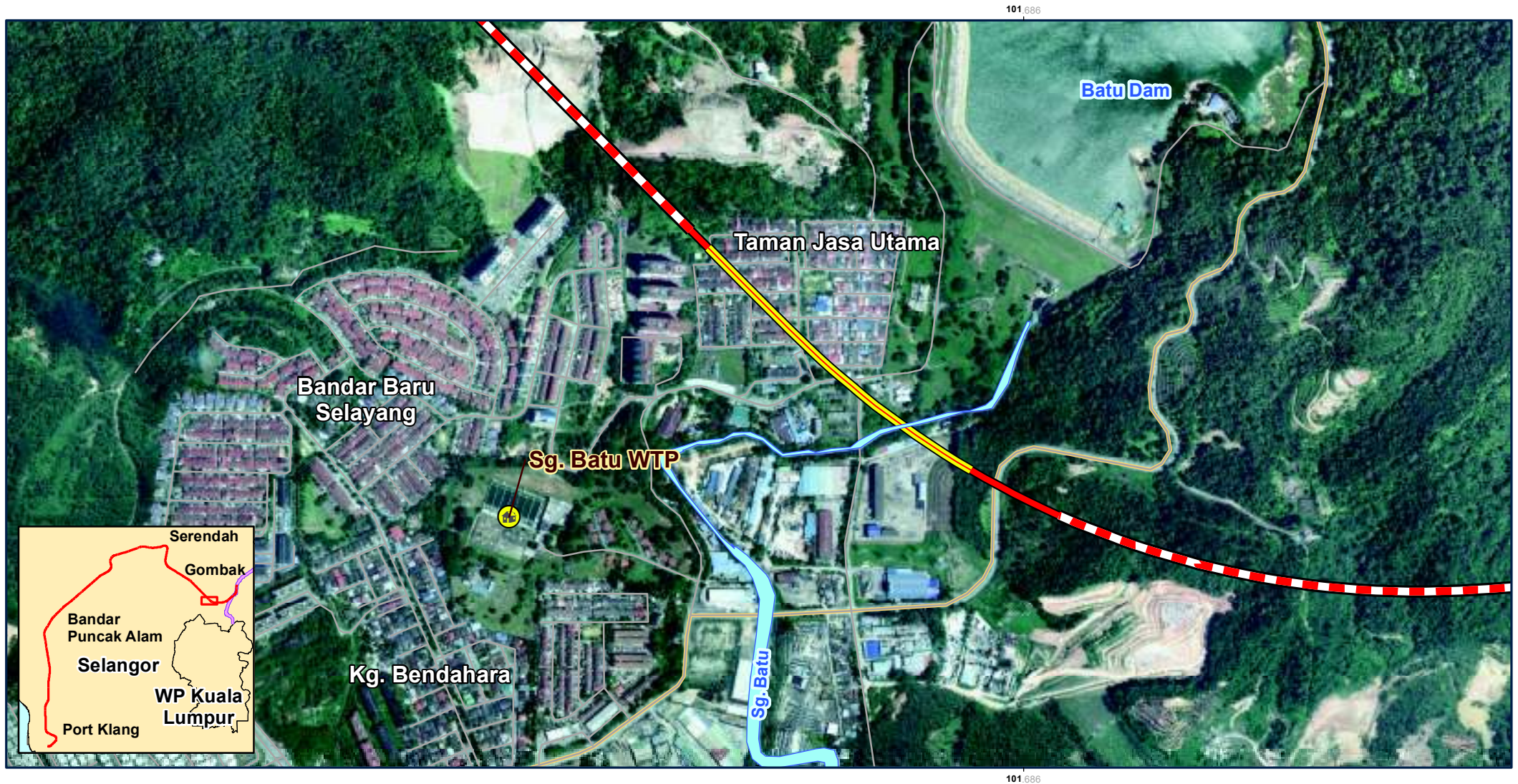
## Water Supply Intake in Kelantan

Date	16-10-2017
Project No	EJ 616
Produced by	AFZ
Revision	A

**FIGURE 6.7-3**

Disclaimer: This map is produced solely for its intended purpose only. All reasonable care has been taken to ensure that the information presented here is accurate, subject to the availability and quality of data sources used. There is however no guarantee that this map is free from errors or omissions. Its use for any other purposes is therefore at the sole risk of the user.  
Source: ERE Consulting Group (2017), OpenStreetMap (2017), Department of Irrigation and Drainage (2016) G:\Project\EJ 616 The East Coast Rail Link - Phase (2)\Maps\MXD\IEIA\Fig6.7-3\_WaterIntake\_North.mxd





### Legend

- Proposed Station
- Proposed Alignment (At-grade)
- Proposed Alignment (Elevated)
- Proposed Alignment (Tunnel)
- WTP Water Treatment Plant
- Major Road
- Minor Road
- Rivers/ Streams

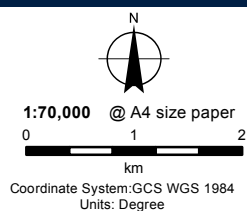


### Water Supply Intake at Sg. Batu

Date	29-09-2017
Project No	EJ 616
Produced by	AFZ
Revision	A

**FIGURE 6.7-4a**





## Legend

- Proposed Station
- Proposed Alignment (At-grade)
- Proposed Alignment (Elevated)
- Proposed Alignment (Tunnel)
- Water Treatment Plant
- Water Intake
- Rivers/ Streams
- Minor Road
- Major Road

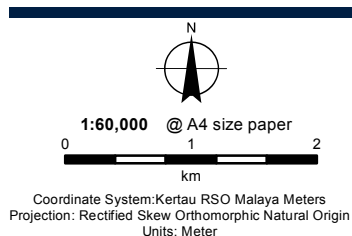


## Water Supply Intakes at Sg. Selangor

Date	04-10-2017
Project No	EJ 616
Produced by	AFZ
Revision	A

**FIGURE 6.7-4b**





### Location of Fisheries and Aquaculture Activities (Kelantan)

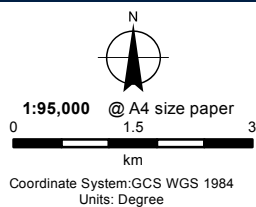
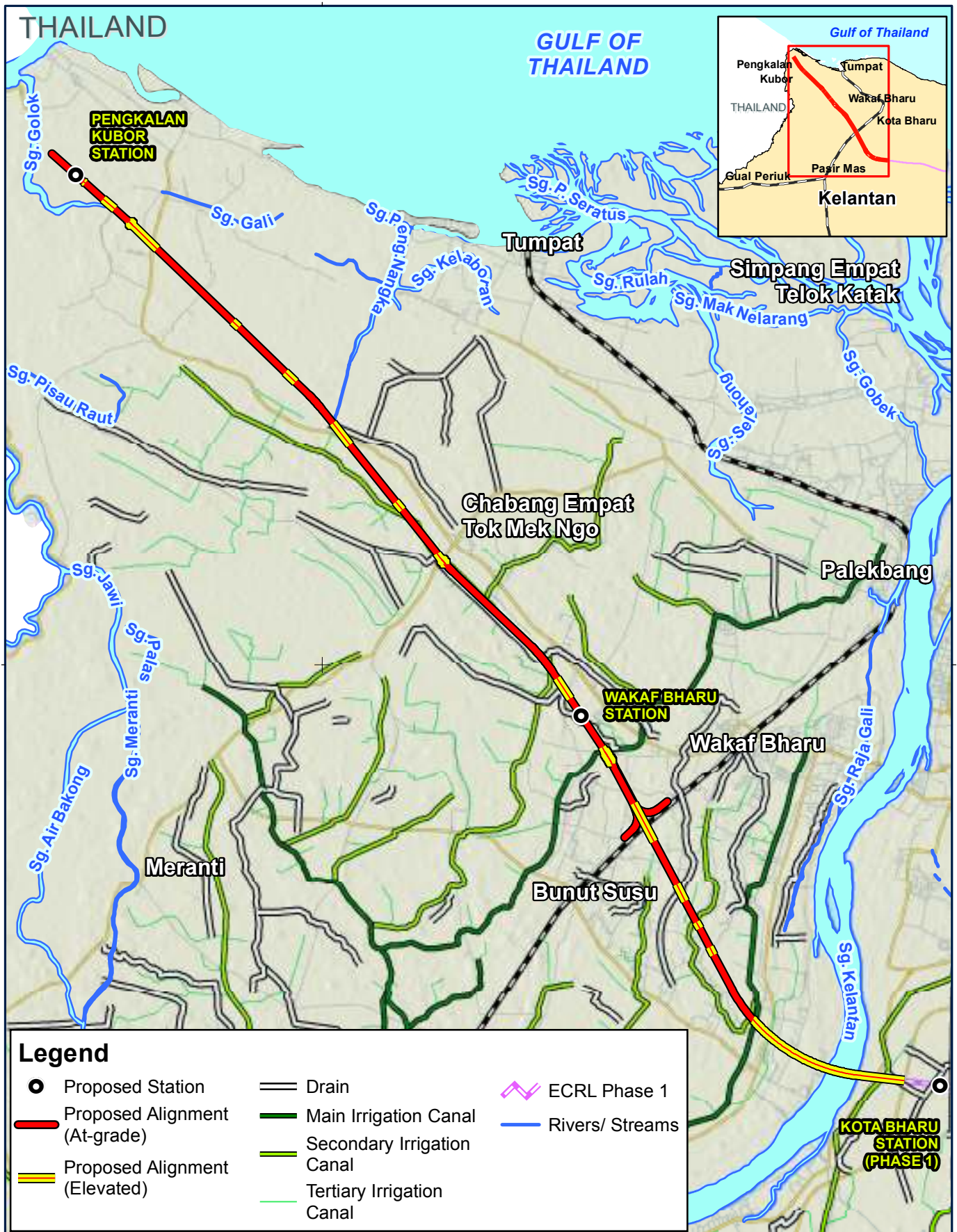
Date: 27-09-2017  
Project No: EJ 616  
Produced by: AFZ  
Revision: A

**FIGURE 6.7-5**







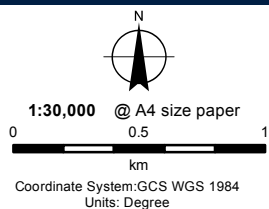
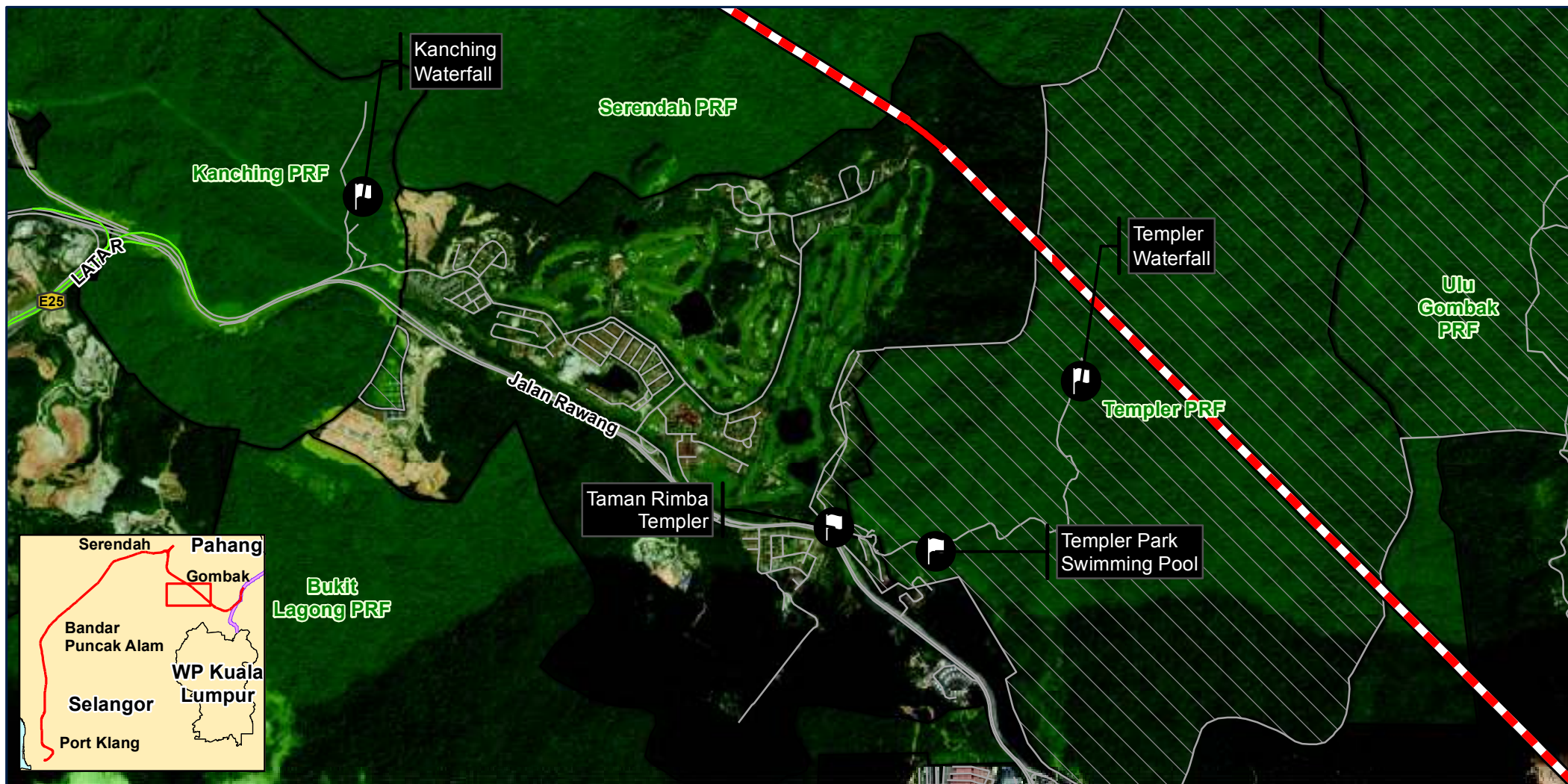


### Irrigation Schemes in Segment 1: Kelantan

Date 29-09-2017  
Project No EJ 616  
Produced by AFZ  
Revision A

**FIGURE 6.7-7**





### Legend

- Recreational Areas
- Proposed Station
- Proposed Alignment (At-grade)
- Proposed Alignment (Elevated)
- Proposed Alignment (Tunnel)
- Highway
- Minor Road
- Selangor State Park
- Permanent Reserve Forest



### Location of Recreational Areas (Selangor)

Date	27-09-2017
Project No	EJ 616
Produced by	AFZ
Revision	A

**FIGURE 6.7-8**