

Chapter**1****Introduction****1.1 Introduction**

This introductory chapter sets out the specific preliminary details relevant to this Environmental Impact Assessment (EIA). These details include the title of the Project, Project brief, contacts of the Project Proponent and Environmental Consultant, and relevant environmental legislation requirement.

1.2 Project Title

The title of this report is the **Environmental Impact Assessment for Proposed Development of Kuantan Maritime Hub at Mukim Sungai Karang, Kuantan, Pahang Darul Makmur**, hereinafter will be referred as the Kuantan Maritime Hub (KMh), or just the proposed Project.

1.3 The Project

The development of the proposed KMh will include shipyard and fabrication yard with associated maritime industrial park, dedicated navigation channel as well as training institution, business and residential developments.

Figure 1.3.1 and **Table 1.3.1** show the proposed development breakdown within the project area. The development planning on the area designated for Phases 2 and 3 will only be determined by future market requirement and tentatively it is earmarked for industrial parks.



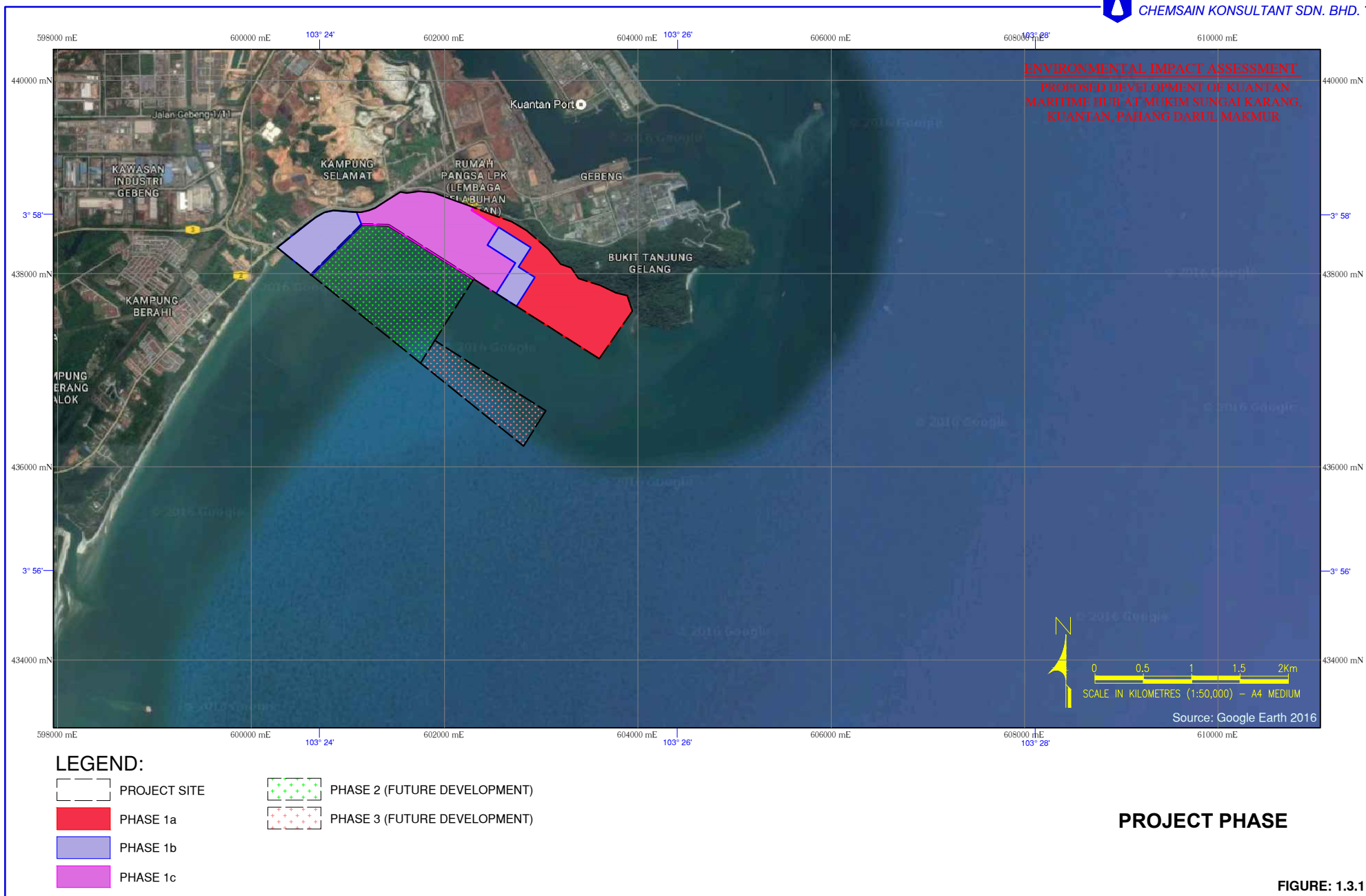


FIGURE: 1.3.1

Table 1.3.1: Breakdown of Project Development

Development Phase	Development	Approximate Acreage (acre)
Phase 1	Shipyard	120
	Fabrication Yard	200
	Training Institution	30
	Maritime Industrial Park	100
	Business and Residential Park	50
	Total	500
Phase 2	Future Development (Industrial Park)	365
Phase 3	Future Development (Industrial Park)	115

Key Project activities will include reclamation, dredging and top-side development during construction stage, and operation and maintenance of the shipyard and fabrication yard. This EIA study will cover the reclamation and dredging for Phases 1, 2 and 3 and only proposed development components for Phase 1 only.

1.4 Project Location

The proposed KMH is to be located fronting the South China Sea and in proximity to Kuantan Port (**Figure 1.4.1**). The proposed Project site is situated immediately south of Kuantan Port, approximately 0.9km from Gebeng Industrial Estate and 100m southeast of Kampung Selamat.

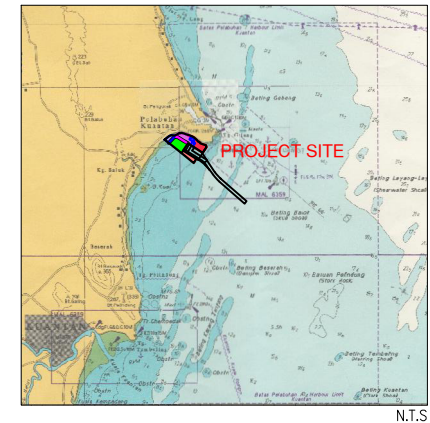
Muhibbah Engineering (M) Bhd (MEB) was given the authority by *Perbadanan Setiausaha Kerajaan Pahang* on 4 June 2016 (**Appendix 1.1**) to develop 3 plots of land with a total area of 500 acres into the proposed KMH. These plots of land namely HSD 47544 PT 22734, HSD 47543 PT 22733 and HSD 47542 PT 22732 will form Phase 1 development of the proposed KMH. MEB wishes to expand the proposed KMH in future with Phase 2 and Phase 3 development with another total land area of approximately 480 acres, and the reclamation for Phases 2 and 3 are included in this EIA study.

Table 1.4.1: Approximate Coordinates of the Project Boundaries





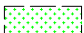

Point	Latitude	Longitude	Associated Land Lot Number
1	3° 57' 48.84" N	103° 23' 45.83" E	HSD 47542 PT 22732
2	3° 57' 39.66" N	103° 23' 57.20" E	HSD 47542 PT 22732
3	3° 57' 06.23" N	103° 24' 38.60" E	Future development
4	3° 56' 41.99" N	103° 25' 08.40" E	Future development
5	3° 56' 53.89" N	103° 25' 15.89" E	Future development
6	3° 57' 17.56" N	103° 24' 38.63" E	Future development
7	3° 57' 38.22" N	103° 24' 51.65" E	HSD 47543 PT 22733
8	3° 57' 11.42" N	103° 25' 33.83" E	HSD 47544 PT 22734
9	3° 57' 27.51" N	103° 25' 44.85" E	HSD 47544 PT 22734



ENVIRONMENTAL IMPACT ASSESSMENT
PROPOSED DEVELOPMENT OF KUANTAN
MARITIME HUB AT MUKIM SUNGAI KARANG,
KUANTAN, PAHANG DARUL MAKMUR



LEGEND:

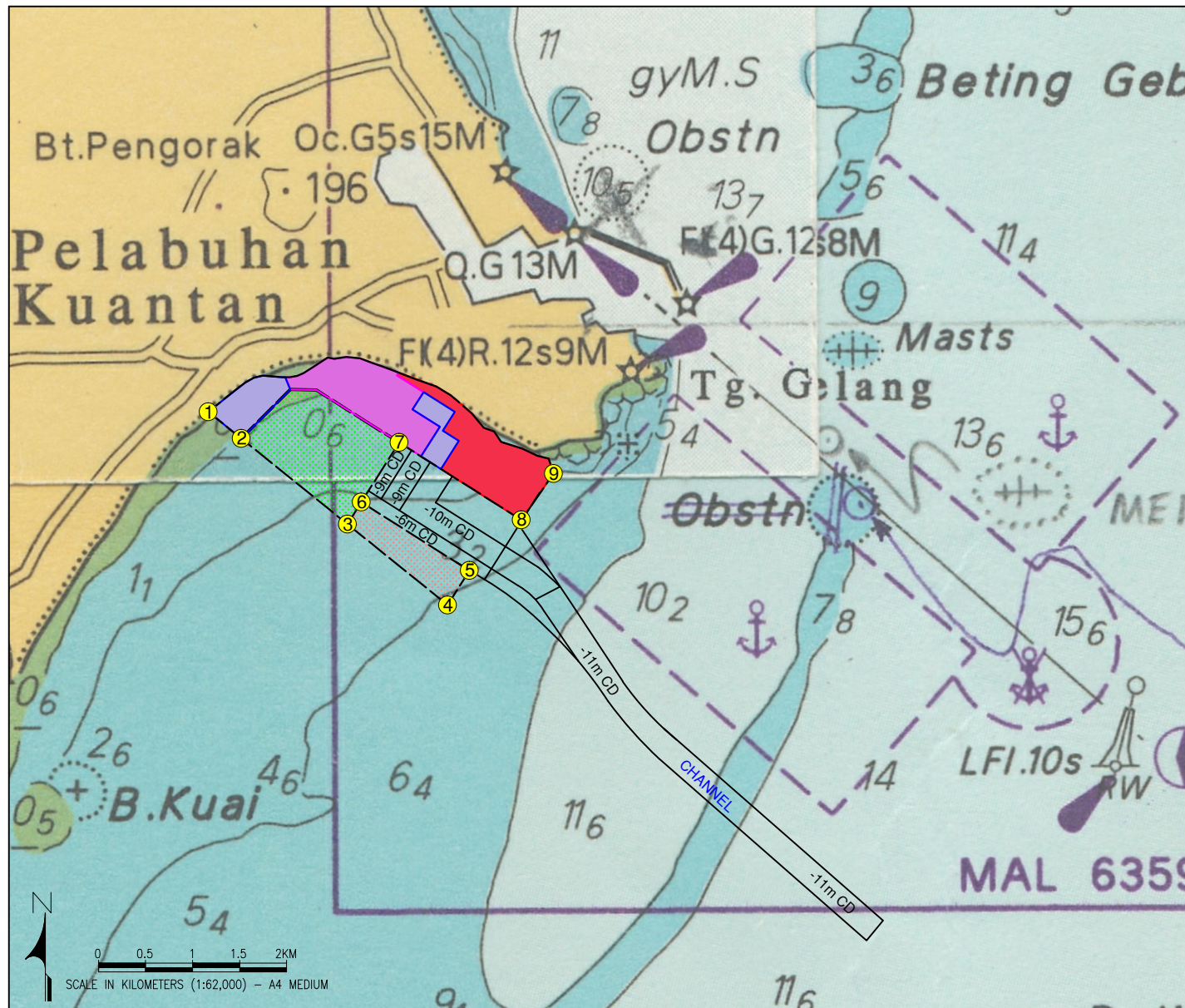
-  PROJECT SITE
-  PHASE 1a
-  PHASE 1b
-  PHASE 1c
-  PHASE 2 (FUTURE DEVELOPMENT)
-  PHASE 3 (FUTURE DEVELOPMENT)

COORDINATES:

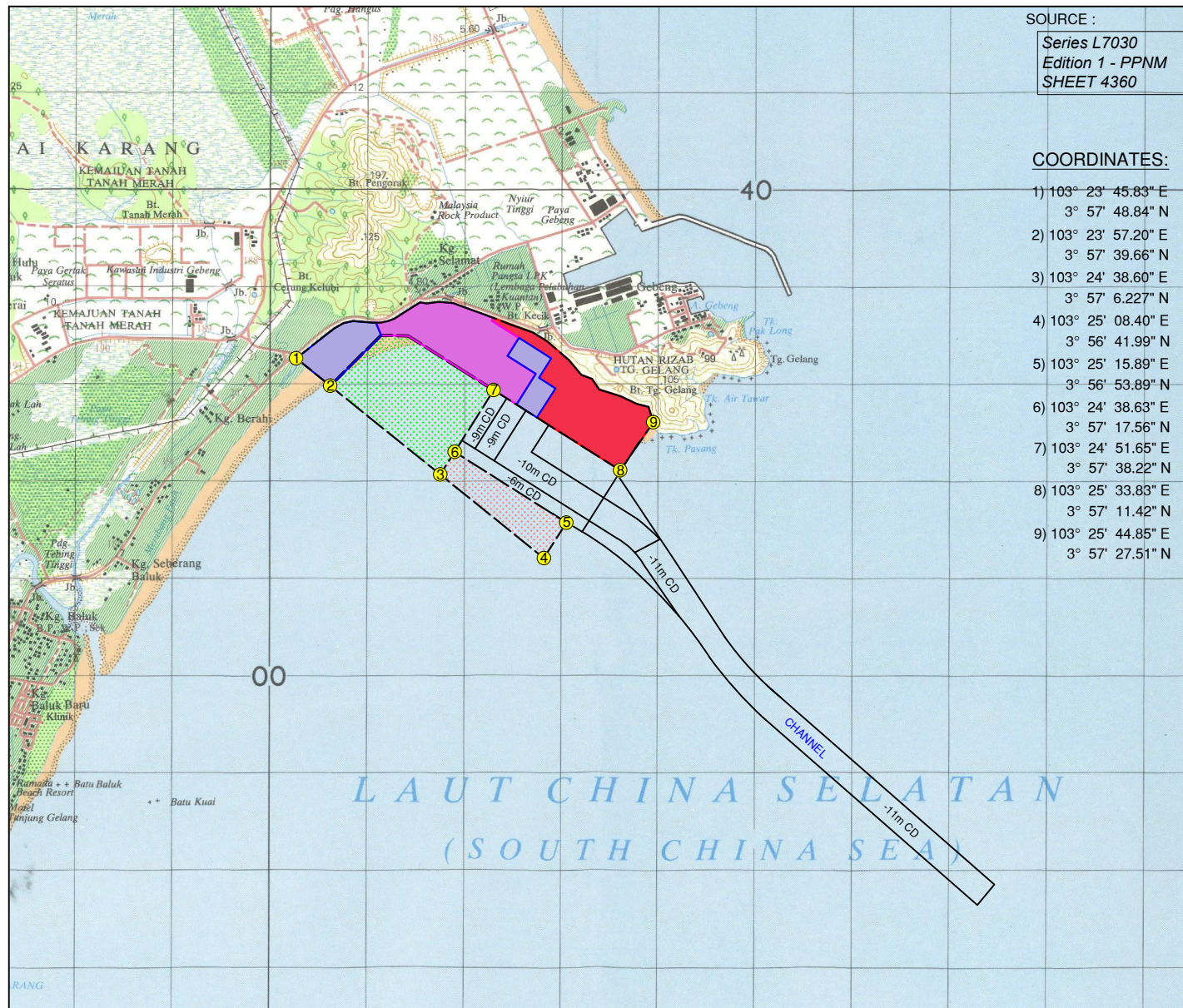
- | | |
|----------------------|----------------------|
| 1) 103° 23' 45.83" E | 6) 103° 24' 38.63" E |
| 3° 57' 48.84" N | 3° 57' 17.56" N |
| 2) 103° 23' 57.20" E | 7) 103° 24' 51.65" E |
| 3° 57' 39.66" N | 3° 57' 38.22" N |
| 3) 103° 24' 38.60" E | 8) 103° 25' 33.83" E |
| 3° 57' 6.227" N | 3° 57' 11.42" N |
| 4) 103° 25' 08.40" E | 9) 103° 25' 44.85" E |
| 3° 56' 41.99" N | 3° 57' 27.51" N |
| 5) 103° 25' 15.89" E | |
| 3° 56' 53.89" N | |

PROJECT LOCATION

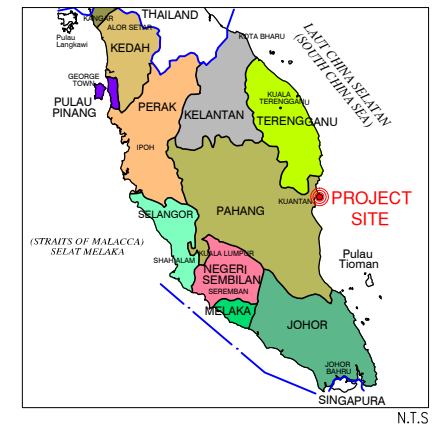
FIGURE: 1.4.1a



SOURCE: MAL 645

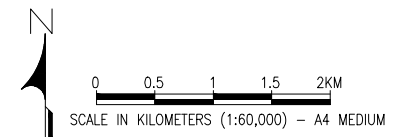


ENVIRONMENTAL IMPACT ASSESSMENT
PROPOSED DEVELOPMENT OF KUANTAN
MARITIME HUB AT MUKIM SUNGAI KARANG,
KUANTAN, PAHANG DARUL MAKMUR



LEGEND:

- PROJECT SITE
- PHASE 1a
- PHASE 1b
- PHASE 1c
- PHASE 2 (FUTURE DEVELOPMENT)
- PHASE 3 (FUTURE DEVELOPMENT)



PROJECT LOCATION

FIGURE: 1.4.1b